

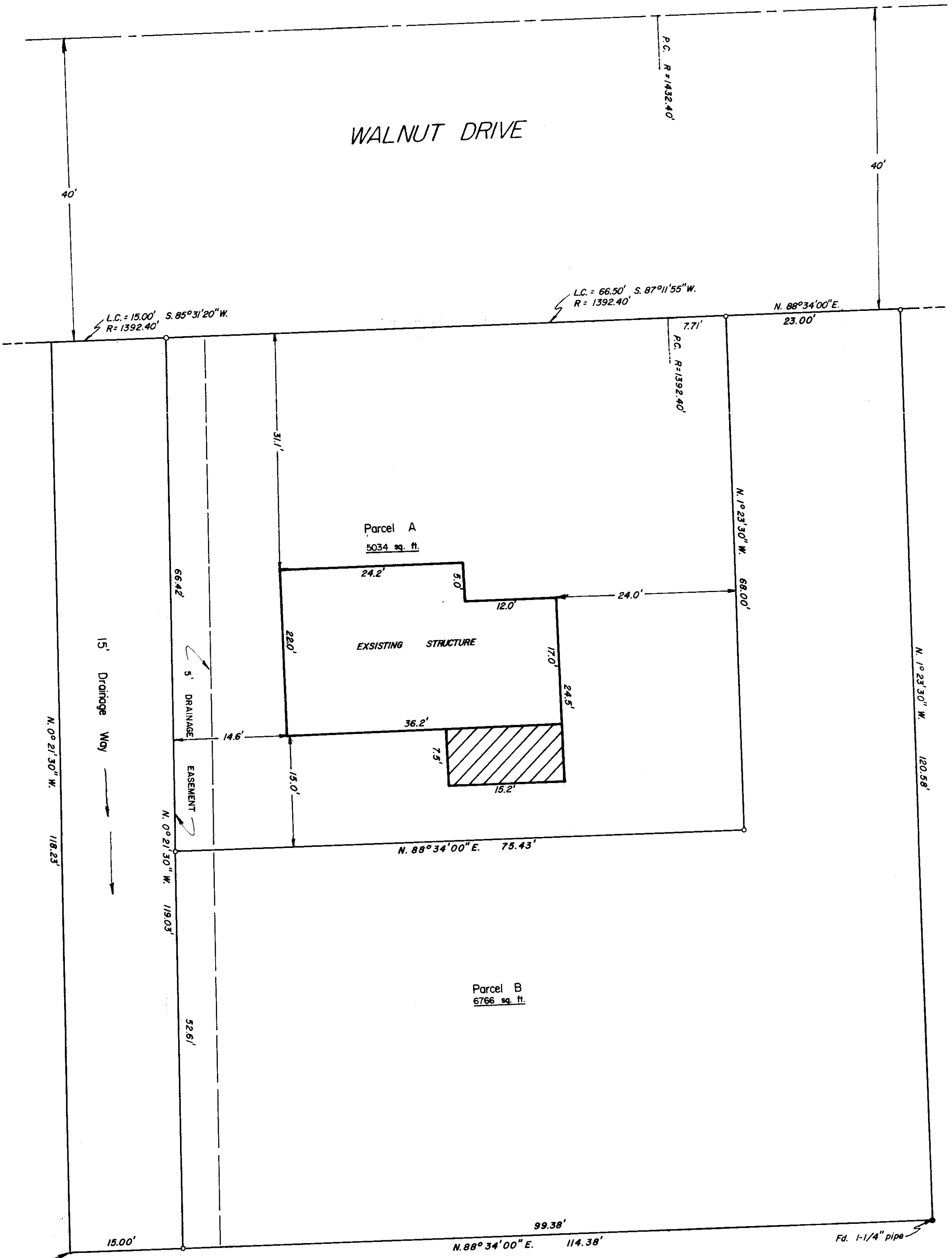
Map of Survey for
M. TASKEEN ALINIAZEE
 In the S.E. 1/4 of Sec. 23 T.11S. R.5W. of W.M.
 In Corvallis Benton County, Oregon

Scale 1"=10'
 Job No. 78-007

January 10, 1978
 Drawn by MLP

REVISED 2/24/78

o Denotes 5/8" rod set



West line of E. 1/2 of Heman Lewis
 Claim No. 47 N. 0° 21' 30" W. 1722.73'
 from S. line of Claim.

REGISTERED
 PROFESSIONAL
 LAND SURVEYOR
Fred I. Lemke
 OREGON
 MAY 2, 1965
 FRED I. LEMKE
 443

MINOR LAND PARTIAL PLANNING BY
David Adams 2/27/78
Bob Bart 2/24/78
 City Engineer Date