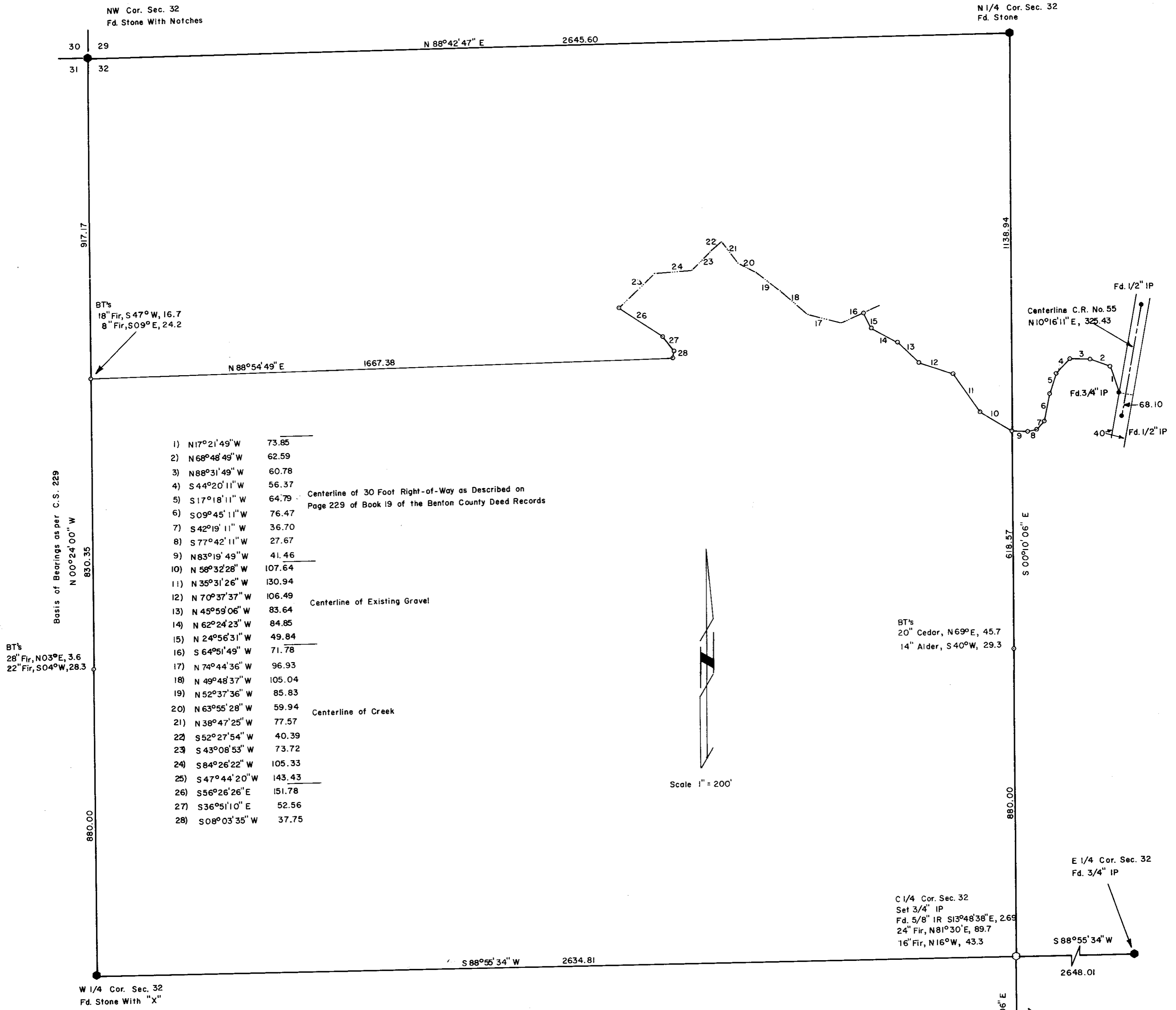


RECORD OF SURVEY  
for ROBERT DEWOSKIN  
IN THE NW 1/4 OF SEC. 32, T 10 S, R 7 W, W. M.  
BENTON COUNTY, OREGON  
JANUARY 1978



1)	N 17° 21' 49" W	73.85
2)	N 68° 48' 49" W	62.59
3)	N 88° 31' 49" W	60.78
4)	S 44° 20' 11" W	56.37
5)	S 17° 18' 11" W	64.79
6)	S 09° 45' 11" W	76.47
7)	S 42° 19' 11" W	36.70
8)	S 77° 42' 11" W	27.67
9)	N 83° 19' 49" W	41.46
10)	N 58° 32' 28" W	107.64
11)	N 35° 31' 26" W	130.94
12)	N 70° 37' 37" W	106.49
13)	N 45° 59' 06" W	83.64
14)	N 62° 24' 23" W	84.85
15)	N 24° 56' 31" W	49.84
16)	S 64° 51' 49" W	71.78
17)	N 74° 44' 36" W	96.93
18)	N 49° 48' 37" W	105.04
19)	N 52° 37' 36" W	85.83
20)	N 63° 55' 28" W	59.94
21)	N 38° 47' 25" W	77.57
22)	S 52° 27' 54" W	40.39
23)	S 43° 08' 53" W	73.72
24)	S 84° 26' 22" W	105.33
25)	S 47° 44' 20" W	143.43
26)	S 56° 26' 26" E	151.78
27)	S 36° 51' 10" E	52.56
28)	S 08° 03' 35" W	37.75

Scale 1" = 200'

**NOTE**  
All bearing trees blazed at base of tree and at 4 feet above ground  
All distances to bearing trees are to center of tree

o Denotes 5/8" Iron Rod Set

**Benton Co. Surveyors Office**  
C. S. FILE NO. 08235  
FILING DATE 3-7-78  
FILE SIZE 18"

**REGISTERED PROFESSIONAL LAND SURVEYOR**  
*Jim S. Peterson*  
**OREGON**  
JULY 31, 1976  
JIM S. PETERSON  
1084