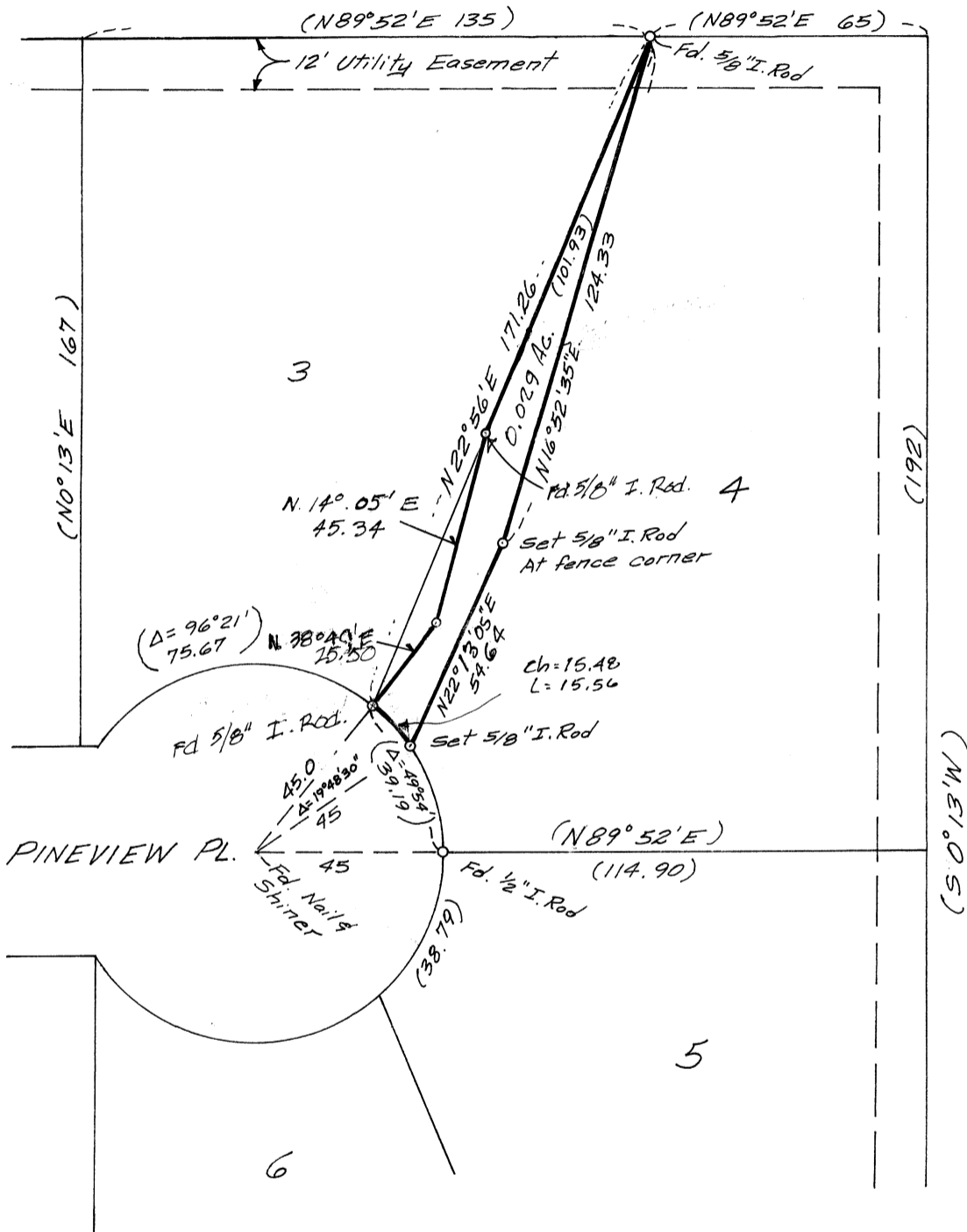


Benton Co. Survey and Plat  
 C.S. NO. 66850  
 PENDING 6-12-77  
 FILE SIZE B/L x 14

Record of Survey  
 for  
**RICHARD MAUER**  
 in  
 Pineview Heights  
 Benton County, Oregon

Scale: 1" = 40' June 29, 1977



*Bearings based on Pineview Heights*

REGISTERED  
 PROFESSIONAL  
 LAND SURVEYOR

*Verle C. Moore*  
 OREGON  
 MAY 13, 1960  
 VERLE C. MOORE  
 501