

Benton Co. Surveyors Office

C. S. FILE NO. 00376

FILING DATE 7-12-78

FILE SIZE 18"

# MINOR LAND PARTITION

FOR

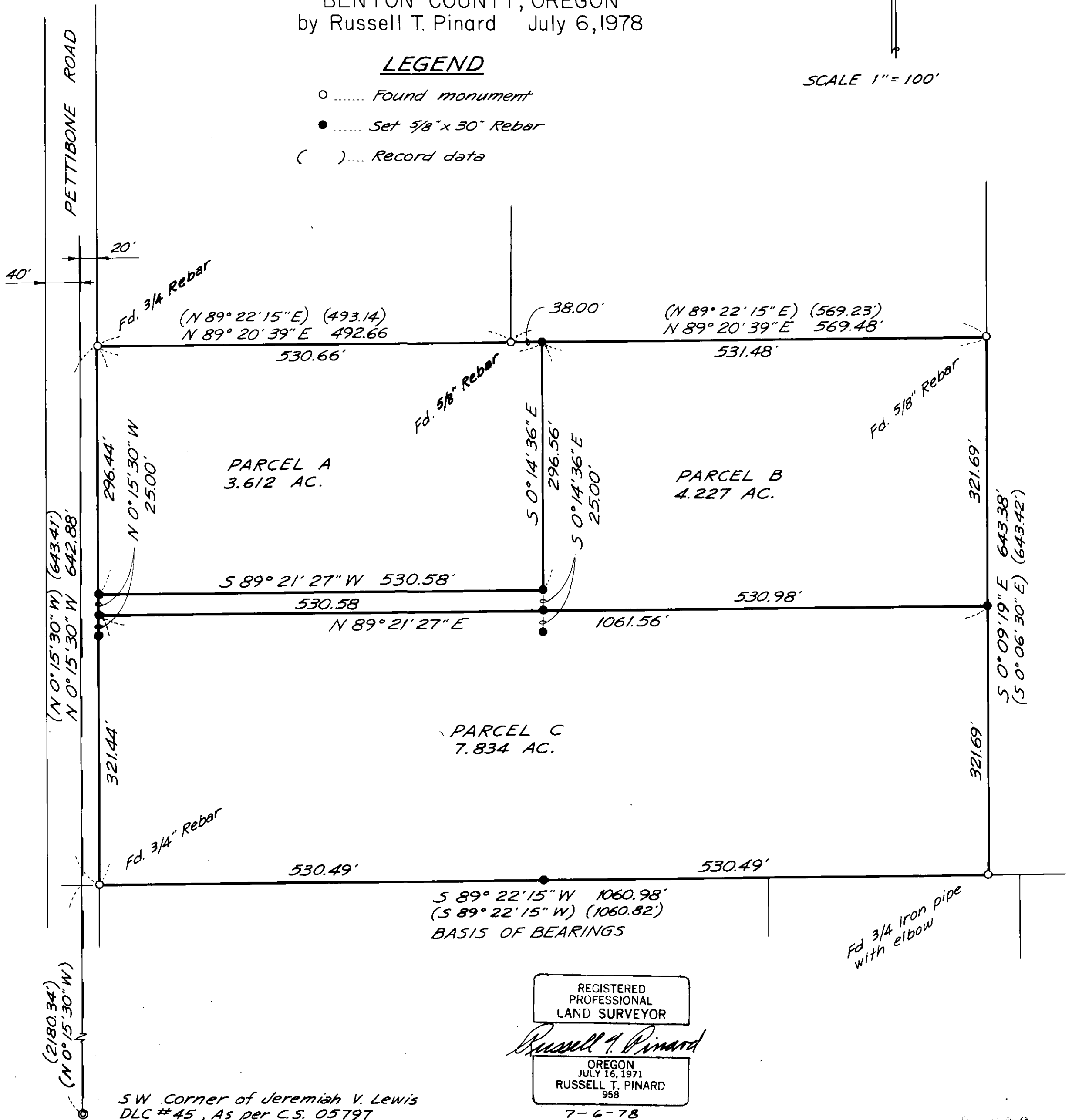
CHUCK SEELYE, DOYLE LEEK, STEVE LEE

IN THE JEREMIAH V. LEWIS DLC 45  
NW 1/4, SEC. 7, T 11 S, R 4 W, W. M.  
BENTON COUNTY, OREGON  
by Russell T. Pinard July 6, 1978

### LEGEND

- ..... Found monument
- ..... Set 5/8" x 30" Rebar
- ( ) ..... Record data

SCALE 1" = 100'



00376