

# MINOR LAND PARTITION FOR GERALD O. MELLAND

IN THE HENRY PENLAND DLC 45  
SE 1/4, SEC. 12, T12 S, R 6 W, W.M.  
BENTON COUNTY, OREGON  
by Russell T. Pinard July 6, 1978

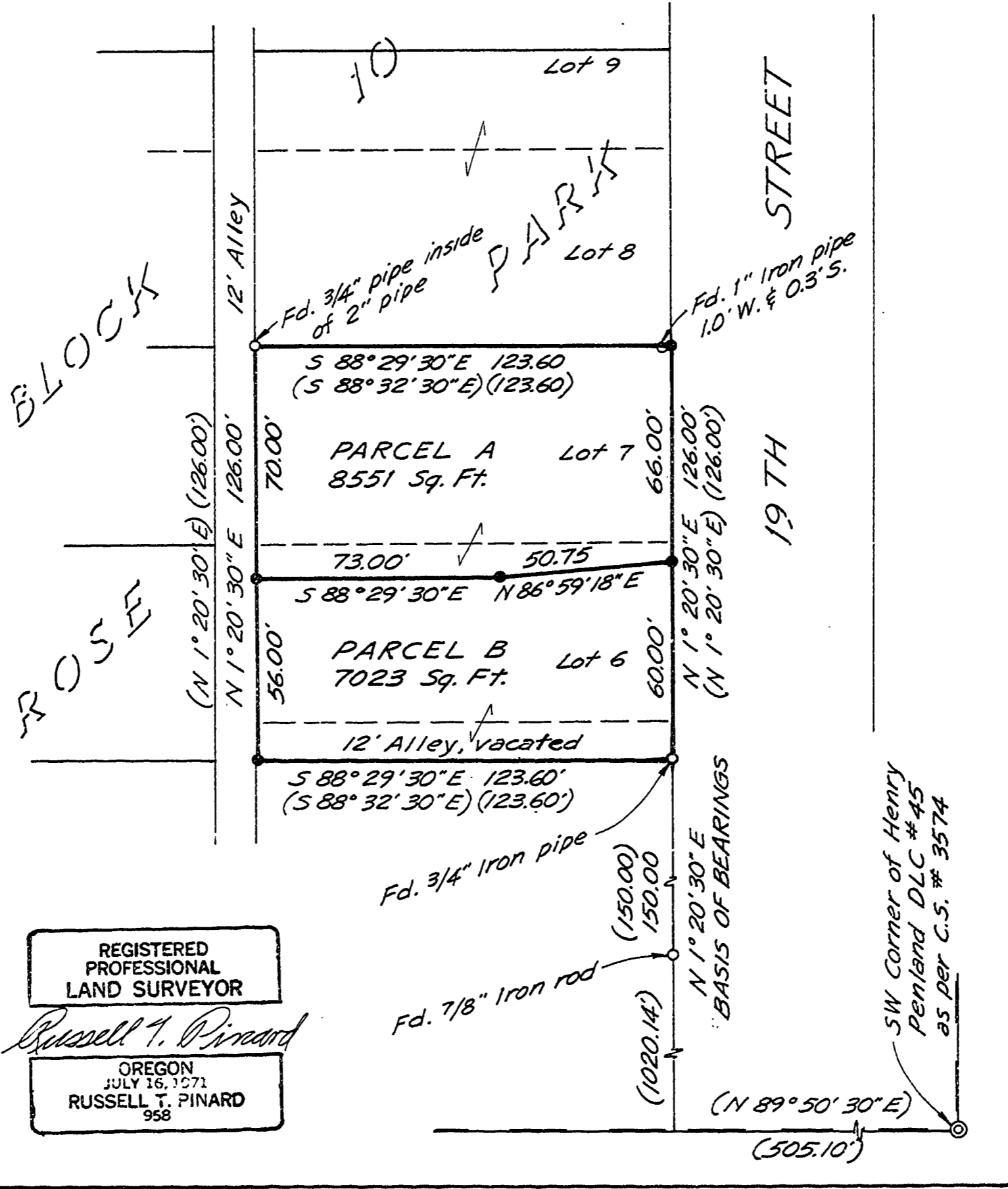
Benton Co. Survey File No. \_\_\_\_\_  
C.S. FILE NO. 30  
FILING DATE 7-12-78  
FILE SIZE 8 1/2 x 14



SCALE: 1" = 40'

## LEGEND

- ..... Found monument
- ..... Set 5/8" x 30" Rebar
- ( ) ..... Record data



REGISTERED  
PROFESSIONAL  
LAND SURVEYOR

*Russell T. Pinard*

OREGON  
JULY 16, 1971  
RUSSELL T. PINARD  
958

SW Corner of Henry  
Penland DLC #45  
as per C.S. # 3574