

06711

RECORD OF SURVEY

for WAYNE SOUZA

in LOTS 11 & 12 of NUT TREE VILLAGE

SE 1/4 SEC. 27, T. 11S., R. 5W., W. M.

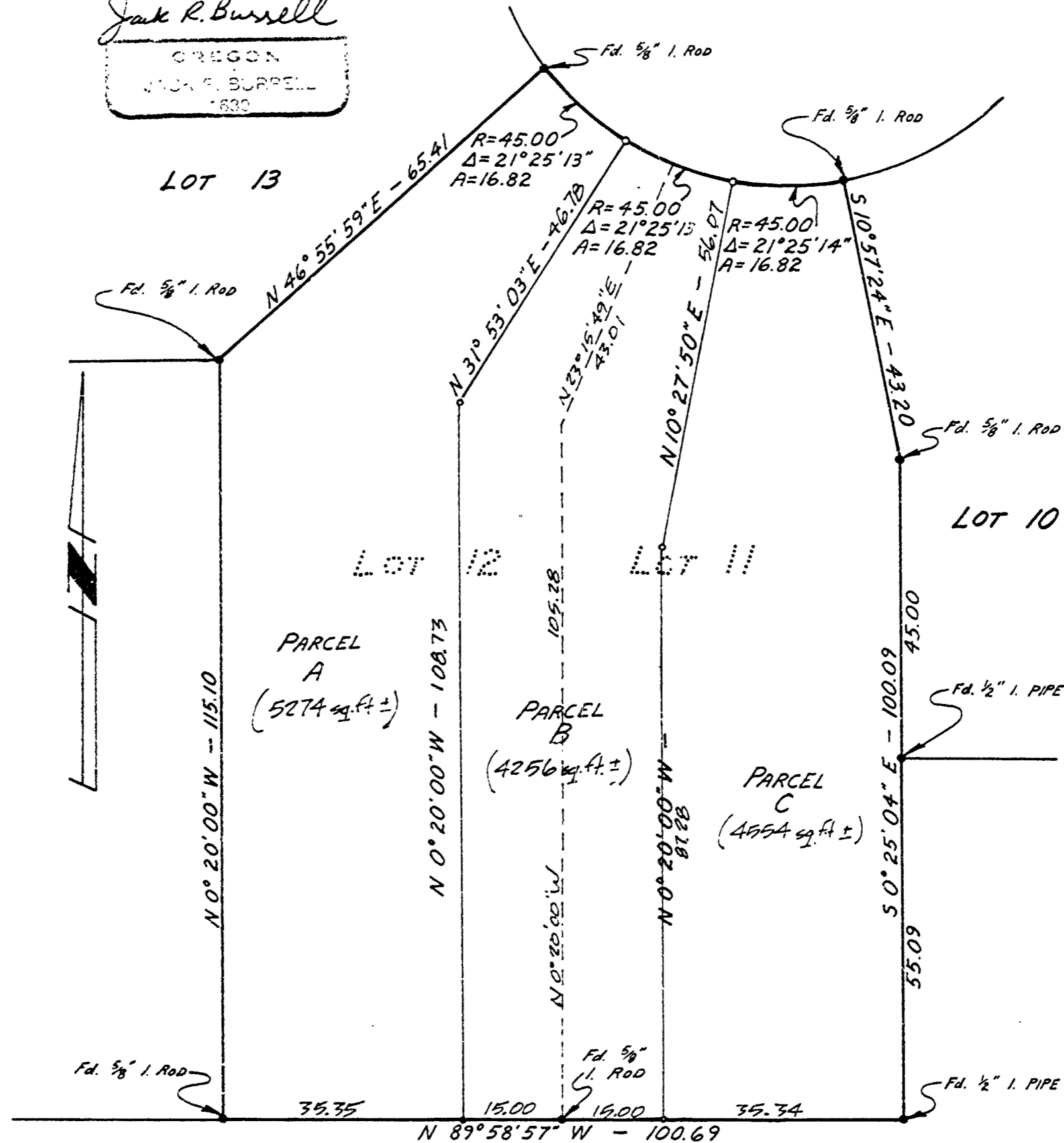
BENTON COUNTY, OREGON

AUGUST 1978
SCALE: 1"=20'

Benton Co. Surveyors Office
C. S. FILE NO. 06711
FILING DATE 8-28-78
FILE SIZE 8 1/2 x 14

REGISTERED
PROFESSIONAL
LAND SURVEYOR
Jack R. Burrell
OREGON
JACK R. BURRELL
1630

N. W. ARTHUR PL.



NOTE:
BASIS OF BEARINGS,
"NUT TREE VILLAGE",
A SUBDIVISION OF RECORD
IN BENTON COUNTY,
OREGON.

LEGEND
○ SET 5/8" IRON ROD
WITH PLASTIC CAP
● FOUND MONUMENT,
AS NOTED