

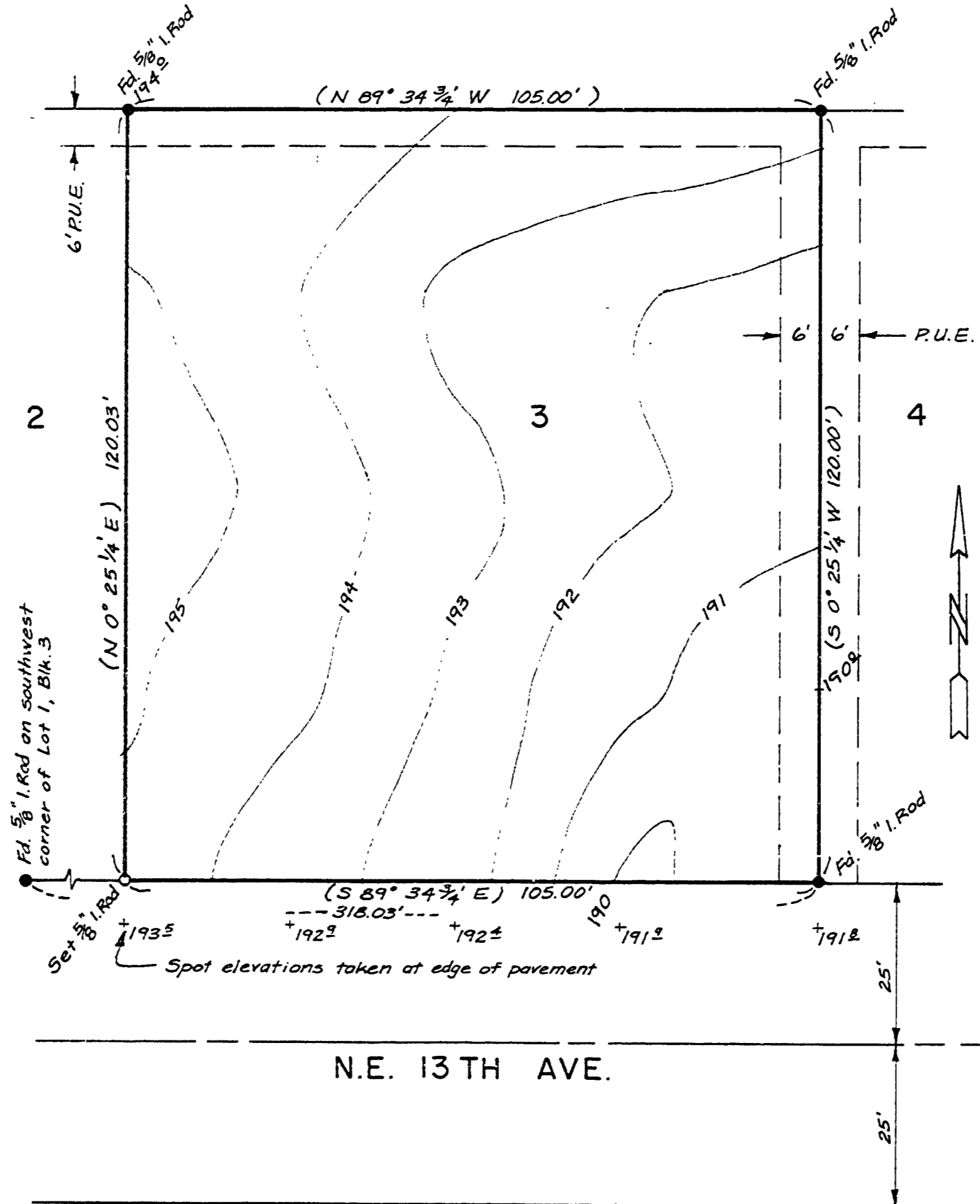
06716

# LANLEY SURVEY

S.E. 1/4, SEC. 31, T.10 S., R 3. W., W. M.  
LOT 3, BLOCK 3, ROLLING GREEN  
BENTON COUNTY, OREGON

SCALE: 1" = 20'

AUGUST 14, 1978



Benton Co. Surveyors Office  
C. S. FILE NO. 06716  
FILING DATE 8-28-78  
FILE SIZE 8 1/2 x 14

REGISTERED  
PROFESSIONAL  
LAND SURVEYOR  
*Howard G. Kraus*  
OREGON  
HOWARD G. KRAUS  
1968

78-109  
CONSULTING  
  
ENGINEERS