

Benton Co. Surveyors Office
 C. S. FILE NO. 6758
 FILING DATE 10-16-78
 FILE SIZE 18"

Survey for
LINN WEST ENTERPRISES
 In S.W. 1/4 Sec. 11, T12 S., R.5 W. of W.M.
 Benton County, Corvallis, Oregon

Scale 1"=30' Job No. 78-263
 Drawn by MP October, 1978

LEGEND:
 (m) = measured
 (D) = refers to deed m-61176
 (R) = recorded

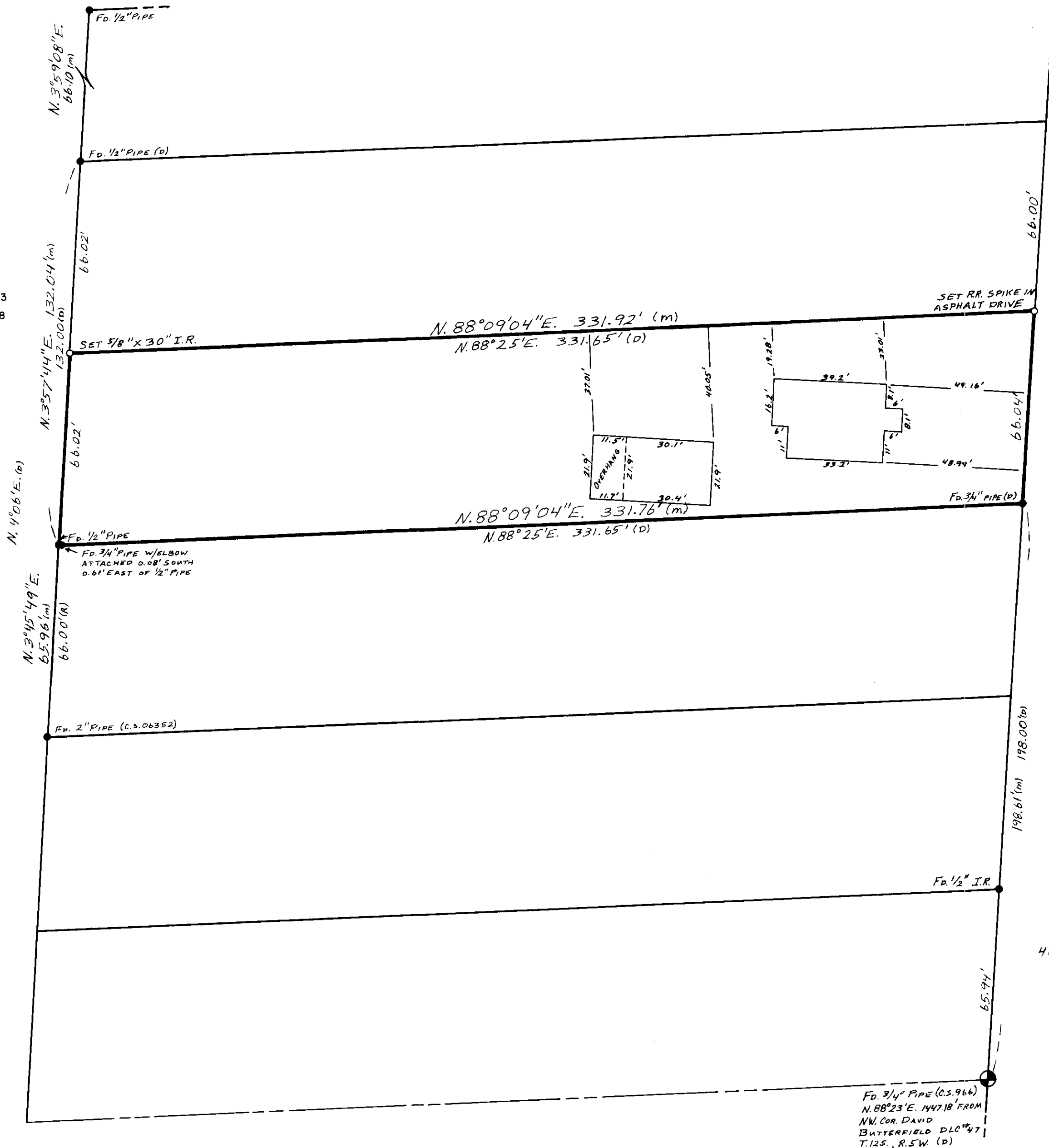


Basis of bearing W. R.O.W.
 line US HWY 99W S. 3rd
 St. Corvallis, OR.

REGISTERED
 PROFESSIONAL
 LAND SURVEYOR

Fred I. Lemke

OREGON
 MAY 2, 1959
 FRED I. LEMKE
 443



6758

U.S. HWY. 99W. - S. 3rd ST.
 N. 4°06'E.

6758