

Benton Co. Surveyors Guild  
 C.S. FILE NO 6776  
 FILED DATE 10-27-78  
 PLS SIZE 8 1/2 X 14

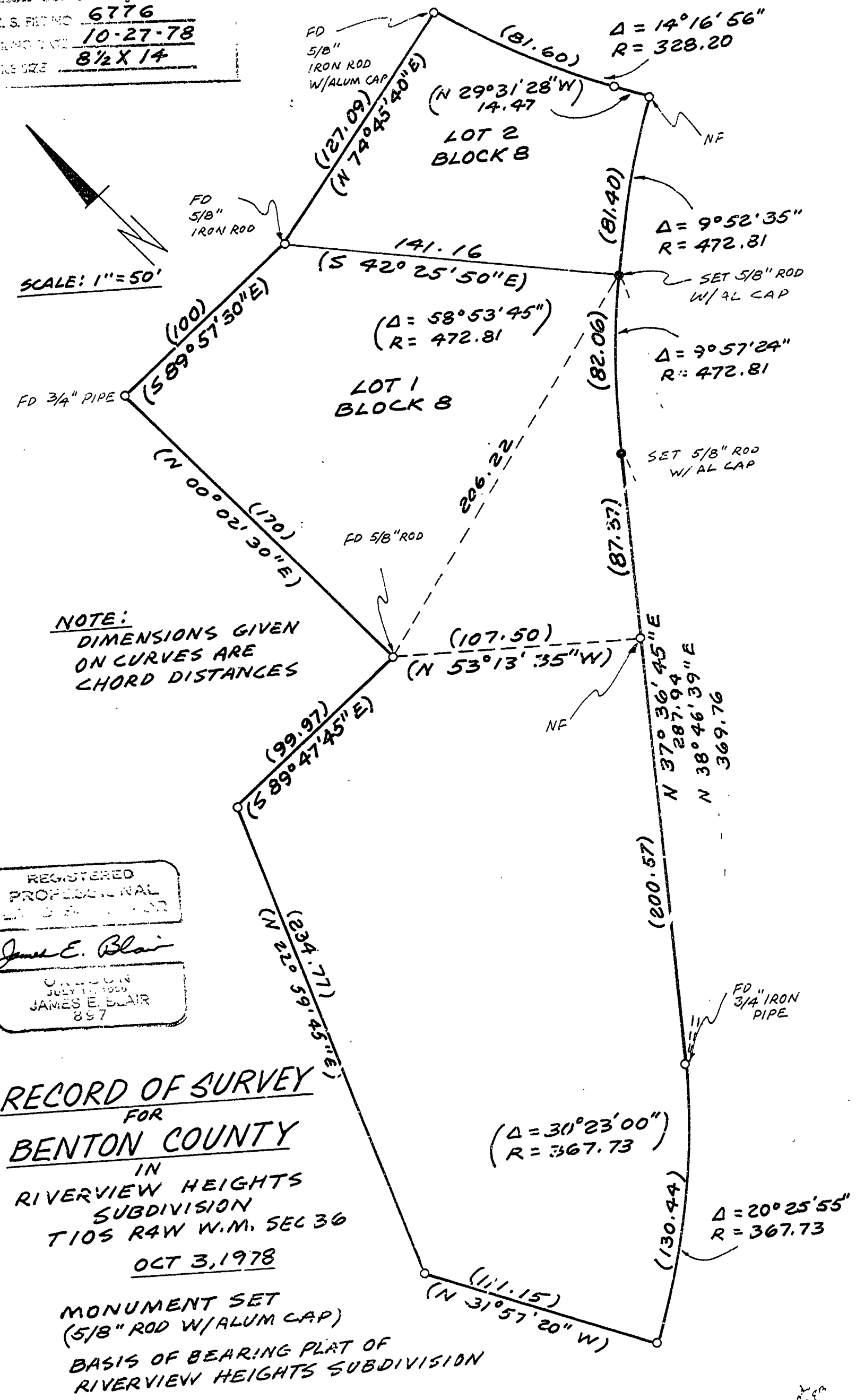
SCALE: 1" = 50'

NOTE:  
 DIMENSIONS GIVEN  
 ON CURVES ARE  
 CHORD DISTANCES

REGISTERED  
 PROFESSIONAL  
 SURVEYOR  
 James E. Blair  
 LICENSED IN  
 MISSOURI  
 JULY 11, 1959  
 JAMES E. BLAIR  
 857

RECORD OF SURVEY  
 FOR  
 BENTON COUNTY  
 IN  
 RIVERVIEW HEIGHTS  
 SUBDIVISION  
 T10S R4W W.M. SEC 36  
 OCT 3, 1978

MONUMENT SET  
 (5/8" ROD W/ALUM CAP)  
 BASIS OF BEARING PLAT OF  
 RIVERVIEW HEIGHTS SUBDIVISION



22