

6820

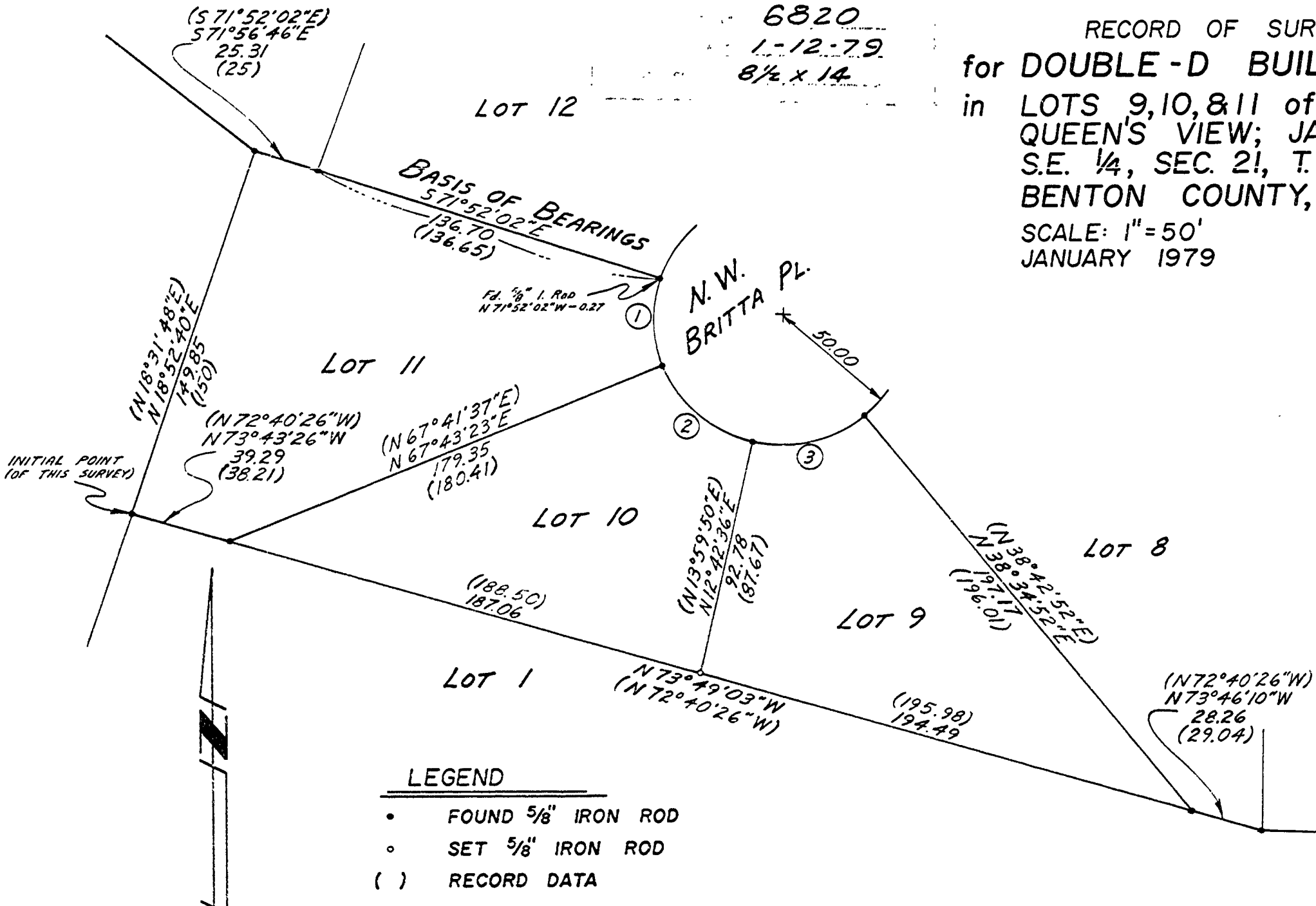
1-12-79

8 1/2 x 14

RECORD OF SURVEY
 for DOUBLE-D BUILDERS/REALTY, INC.
 in LOTS 9, 10, & 11 of BLOCK 2 of
 QUEEN'S VIEW; JAMES MULKEY JR. DLC No. 65;
 S.E. 1/4, SEC. 21, T. 11S., R. 5W., W. M.
 BENTON COUNTY, OREGON

SCALE: 1" = 50'
 JANUARY 1979

REGISTERED
 PROFESSIONAL
 LAND SURVEYOR
Jack R. Burrell
 OREGON
 JACK R. BURRELL
 1630



CURVE DATA			
	Δ	R	A
1	40°17'59"	50.00	35.17
2	53°41'39"	50.00	46.66
3	52°44'40"	50.00	46.03