

DENNIS FRANKLIN

N.W. 1/4 N.E. 1/4 Sec. 2, T.11S. R.4 W., WM.
Benton County, Oregon

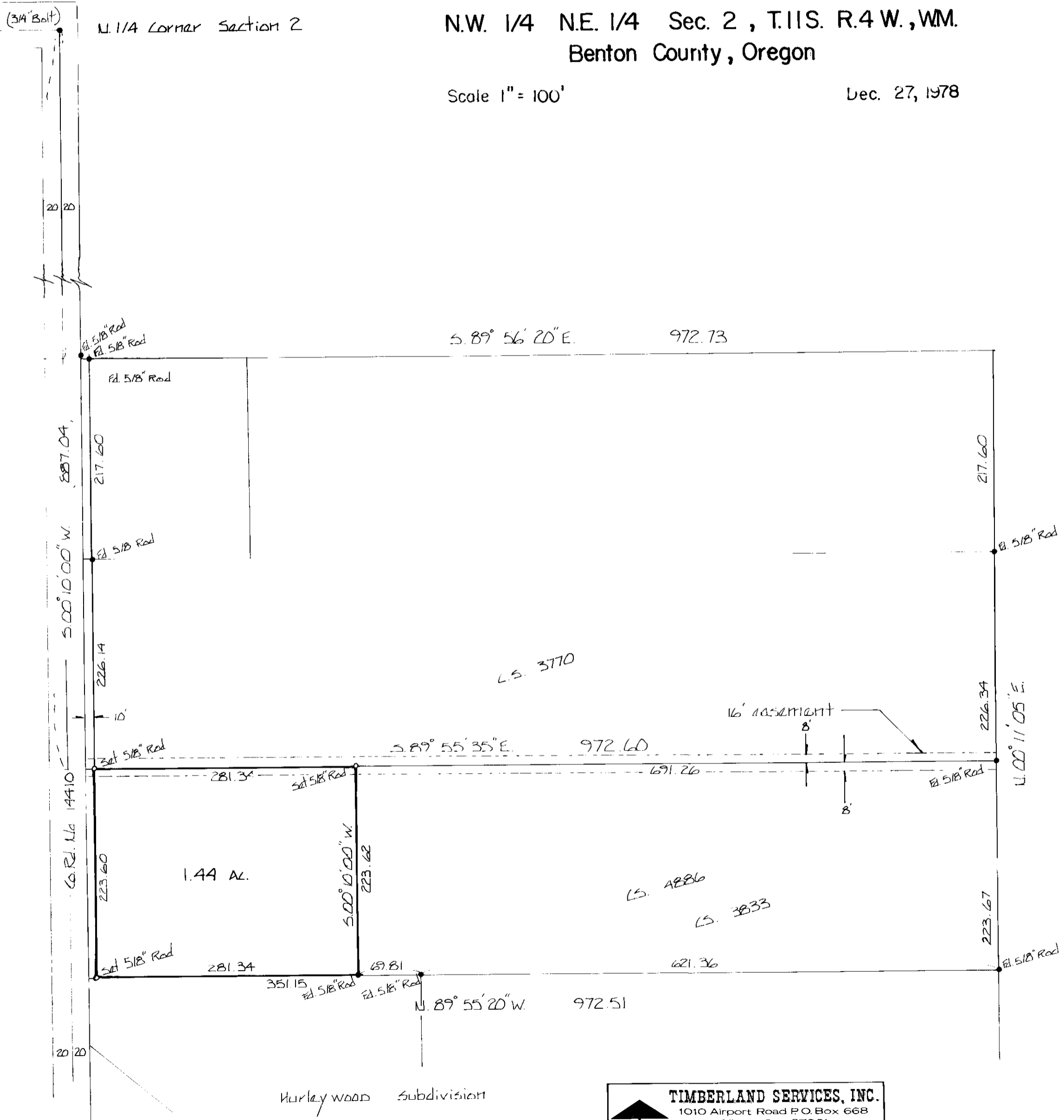
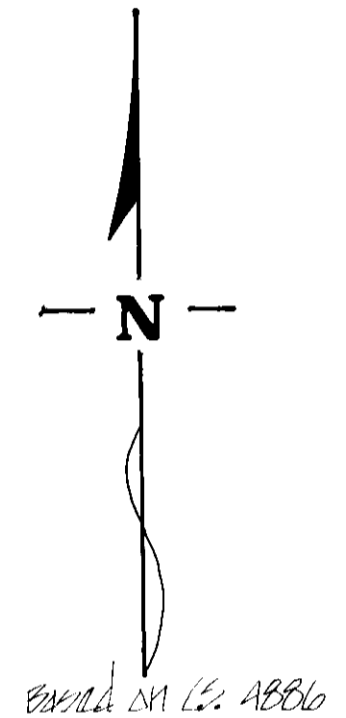
Scale 1" = 100'

Dec. 27, 1978

6828
1-18-79
18"

6828

N. 1/4 Corner Section 2



Edgar R Cook


TIMBERLAND SERVICES, INC.
 1010 Airport Road P.O. Box 668
 Albany Ore. 97321
 Ph. (503) 926-9404
 SURVEYING - ENGINEERING
 LAND USE PLANNING
 FORESTRY CONSULTING