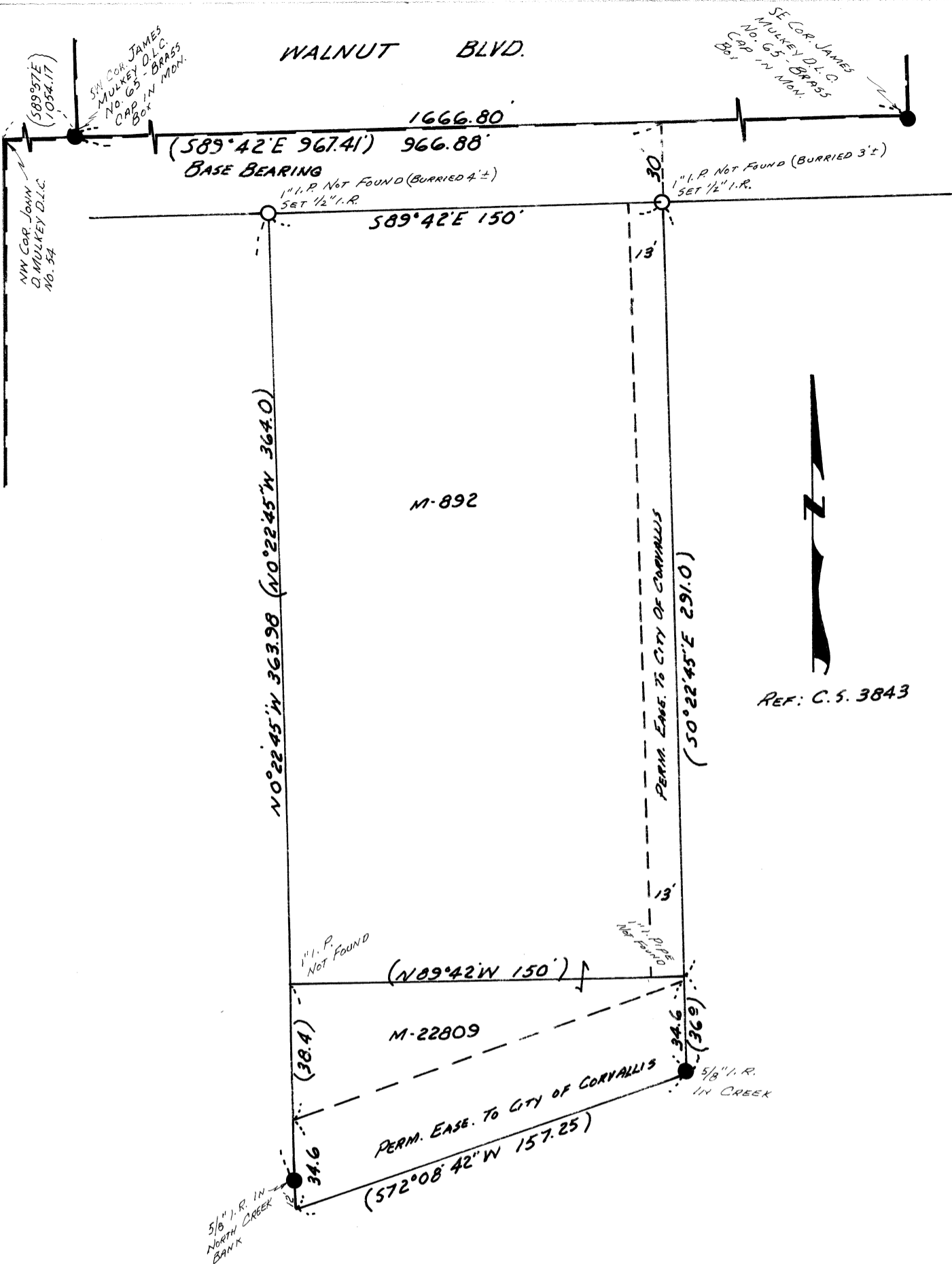


WALNUT BLVD.



NW COR JOHN
D. MULKEY D.L.C.
No. 54
(S89°57'E
1054.17)
SW COR JAMES
MULKEY D.L.C.
No. 65 - BRASS
CAP IN MON.

SE COR JAMES
MULKEY D.L.C.
No. 65 - BRASS
CAP IN MON.



RECEIVED
PLANNING DEPT.
JAN 27 1979
Ally E. Davis

Horton Co. Surveyors Assoc.
C. S. FILE NO. 6849
FILING DATE 2-26-79
FILE SIZE 8 1/2 x 14

VECTOR, INC. 743 MAIN ST. LEBANON, ORE. 97355
SURVEY FOR CONSUMERS POWER,
INC. IN THE SE4 OF SEC. 21, T.11 S.,
R. 5W, W.M., BENTON CO, OREGON

● MONUMENTS FOUND (RECORD)
○ MONUMENTS SET

SCALE: 1" = 50' JANUARY 22, 1979