

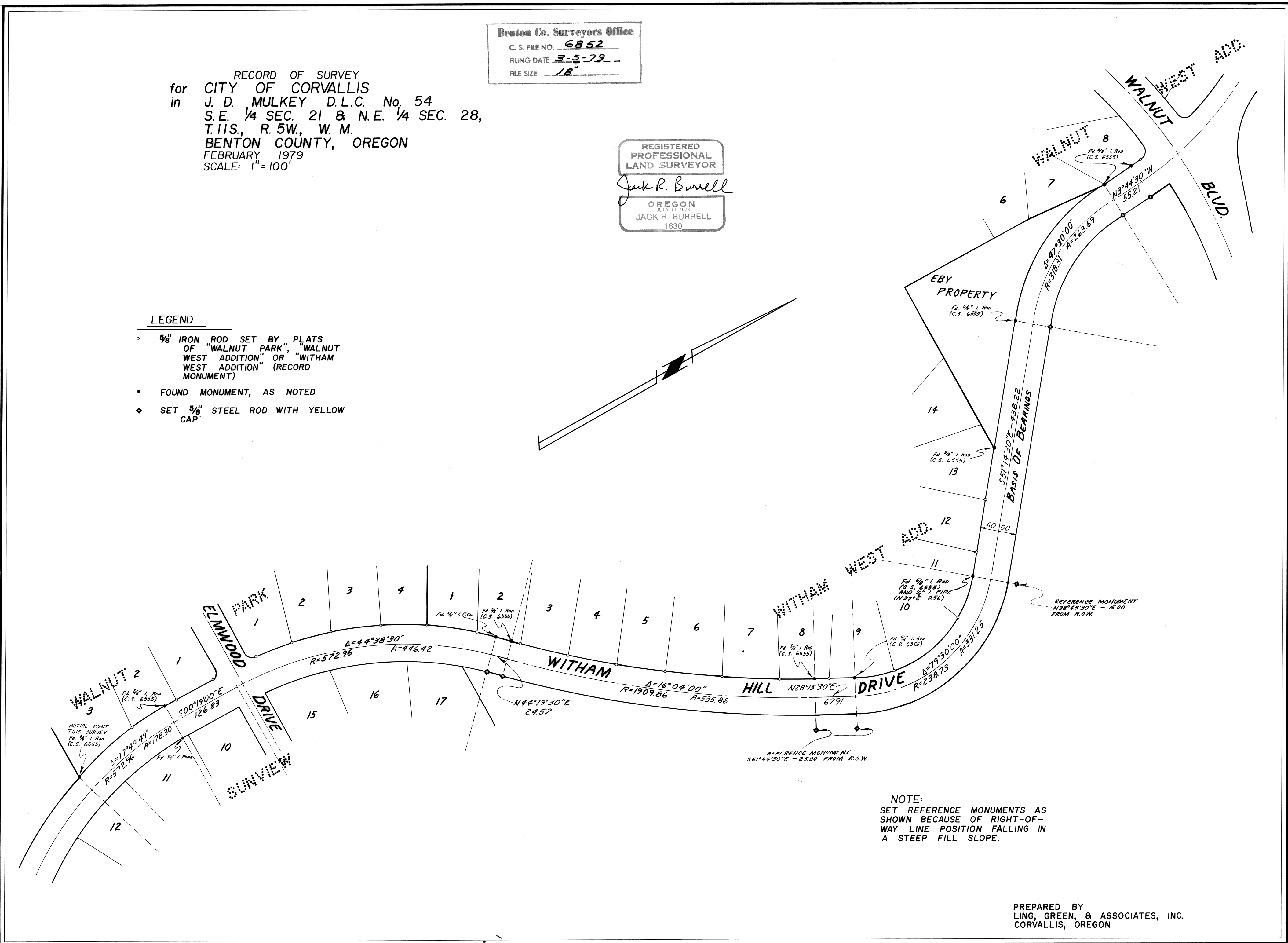
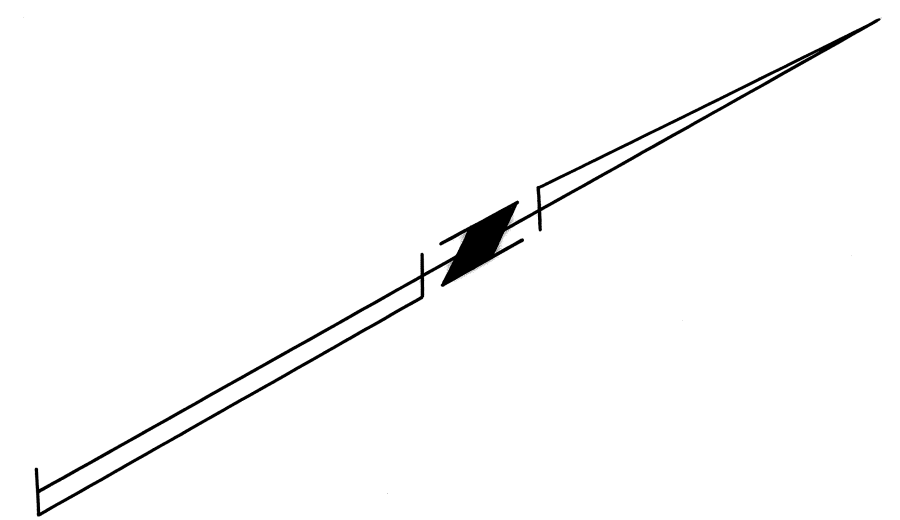
Benton Co. Surveyors Office
 C. S. FILE NO. 6852
 FILING DATE 3-5-79
 FILE SIZE 18

RECORD OF SURVEY
 for CITY OF CORVALLIS
 in J. D. MULKEY D.L.C. No. 54
 S.E. 1/4 SEC. 21 & N.E. 1/4 SEC. 28,
 T.11S., R.5W., W.M.
 BENTON COUNTY, OREGON
 FEBRUARY 1979
 SCALE: 1"=100'

REGISTERED
 PROFESSIONAL
 LAND SURVEYOR
Jack R. Burrell
 OREGON
 JACK R. BURRELL
 1630

LEGEND

- 5/8" IRON ROD SET BY PLATS OF "WALNUT PARK", "WALNUT WEST ADDITION" OR "WITHAM WEST ADDITION" (RECORD MONUMENT)
- FOUND MONUMENT, AS NOTED
- ◆ SET 5/8" STEEL ROD WITH YELLOW CAP



NOTE:
 SET REFERENCE MONUMENTS AS SHOWN BECAUSE OF RIGHT-OF-WAY LINE POSITION FALLING IN A STEEP FILL SLOPE.

PREPARED BY
 LING, GREEN, & ASSOCIATES, INC.
 CORVALLIS, OREGON