

# INVESTMENT PROPERTIES INC.

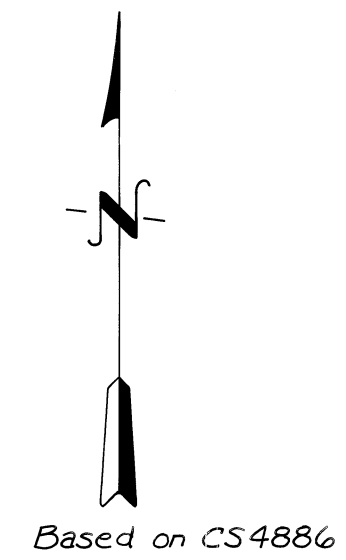
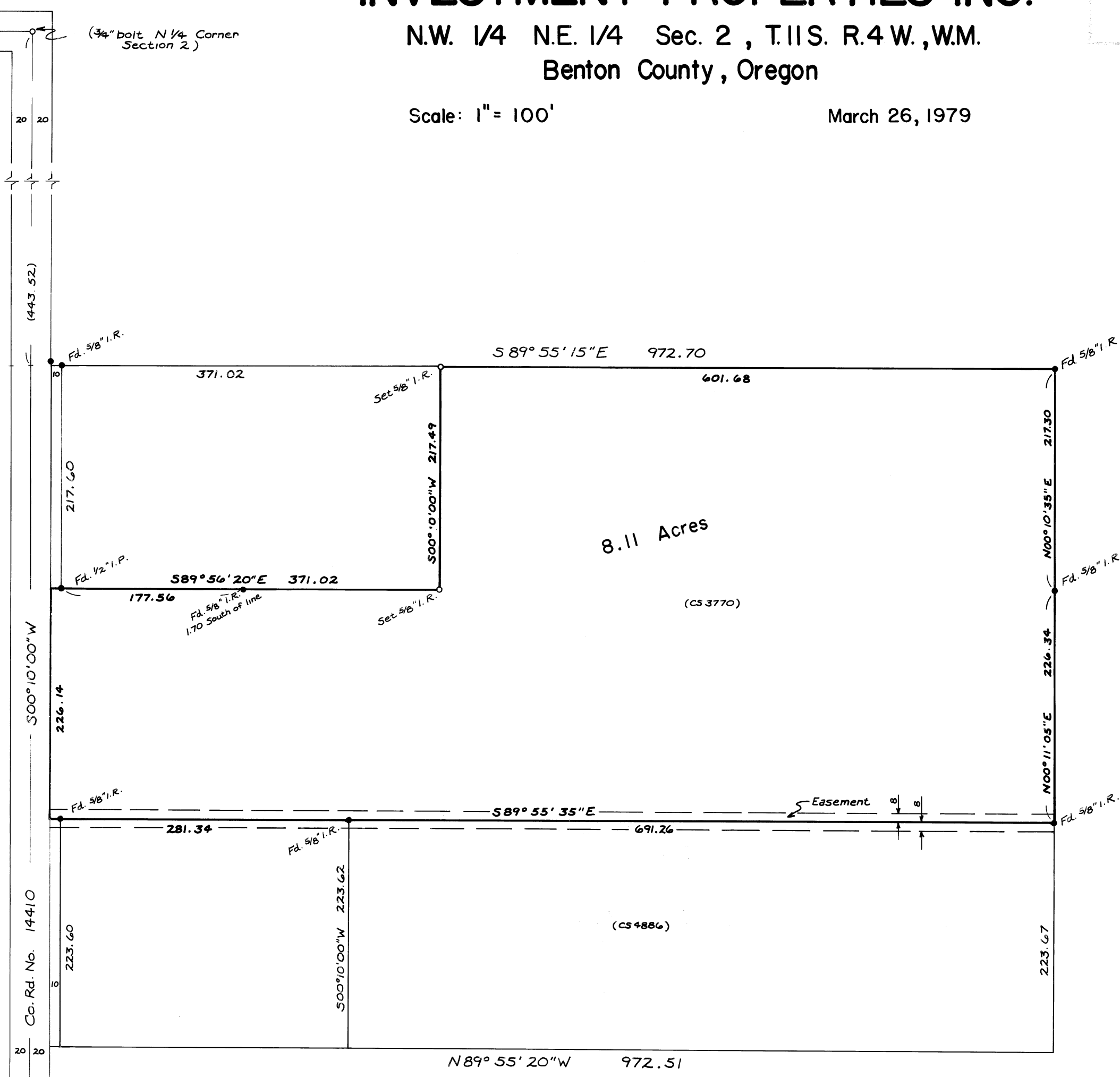
N.W. 1/4 N.E. 1/4 Sec. 2, T.11S. R.4 W., W.M.  
Benton County, Oregon

Scale: 1" = 100'

March 26, 1979

6873  
4-6-79  
18"

(3/4" bolt N 1/4 Corner Section 2)



REGISTERED  
PROFESSIONAL  
AND SURVEYOR

*Edgar R Cook*

OREGON  
JULY 30, 1975  
EDGAR R COOK  
1979

**TIMBERLAND SERVICES, INC.**  
1010 Airport Road P.O. Box 668  
Albany Ore. 97321  
Ph. (503) 926-9404  
SURVEYING - ENGINEERING  
LAND USE PLANNING  
FORESTRY CONSULTING