

# HOBIN LUMBER CO.

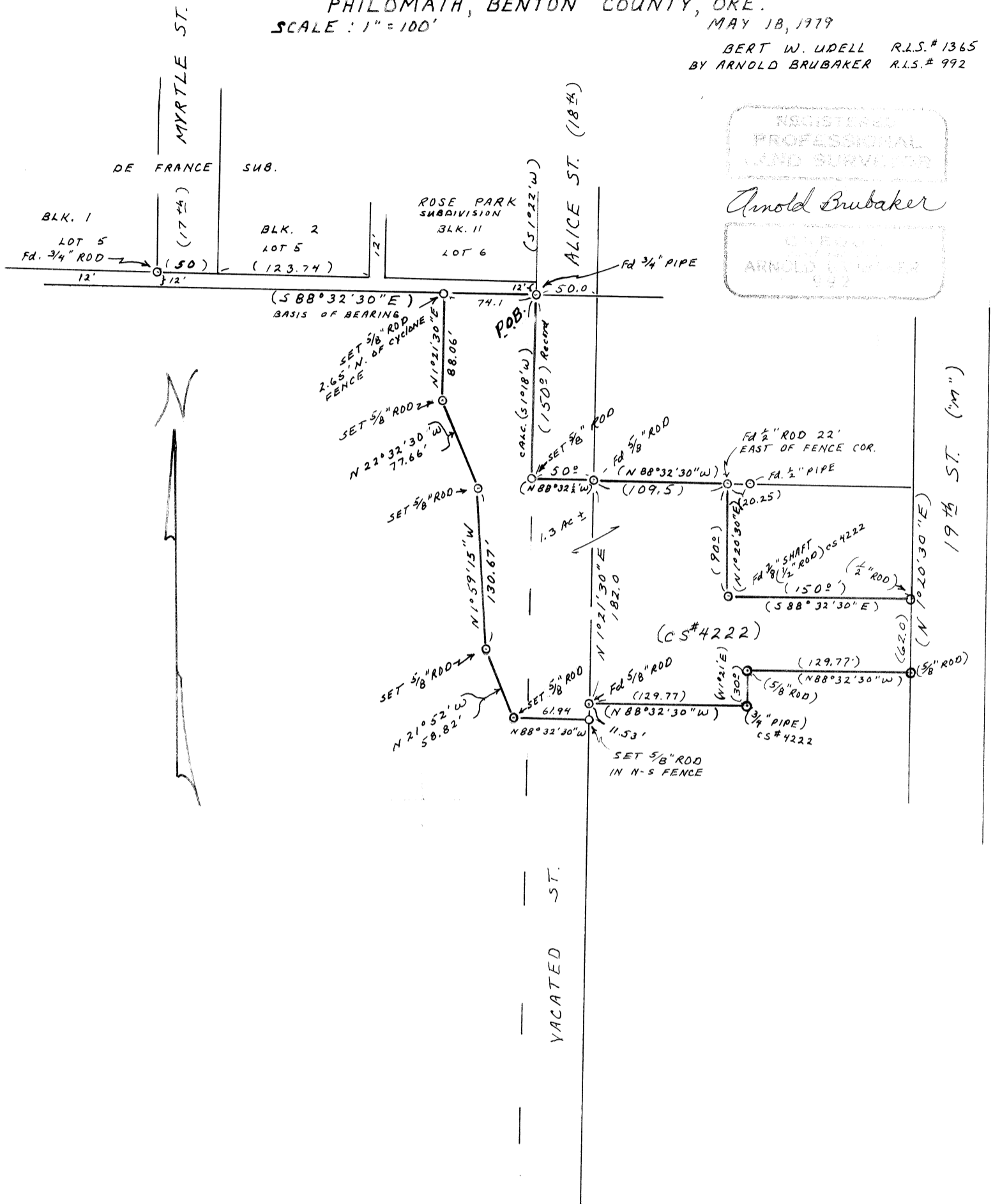
SW 1/4, SE 1/4, SEC. 12, T.12S., R.6W., W.M.

PHILOMATH, BENTON COUNTY, ORE.

SCALE: 1" = 100'

MAY 18, 1979

BERT W. UDELL R.L.S.# 1365  
BY ARNOLD BRUBAKER R.L.S.# 992



REGISTERED  
PROFESSIONAL  
LAND SURVEYOR

*Arnold Brubaker*

ARNOLD BRUBAKER  
992

Benton Co. Surveyors Office

C. S. FILE NO. 6904

FILING DATE 6-6-79

FILE SIZE 8 1/2" x 14"

di