

STARKER FORESTS

SW 1/4, SEC. 24, T.14S., R.8W., W.M.

BENTON COUNTY, ORE.

SCALE: 1" = 200'

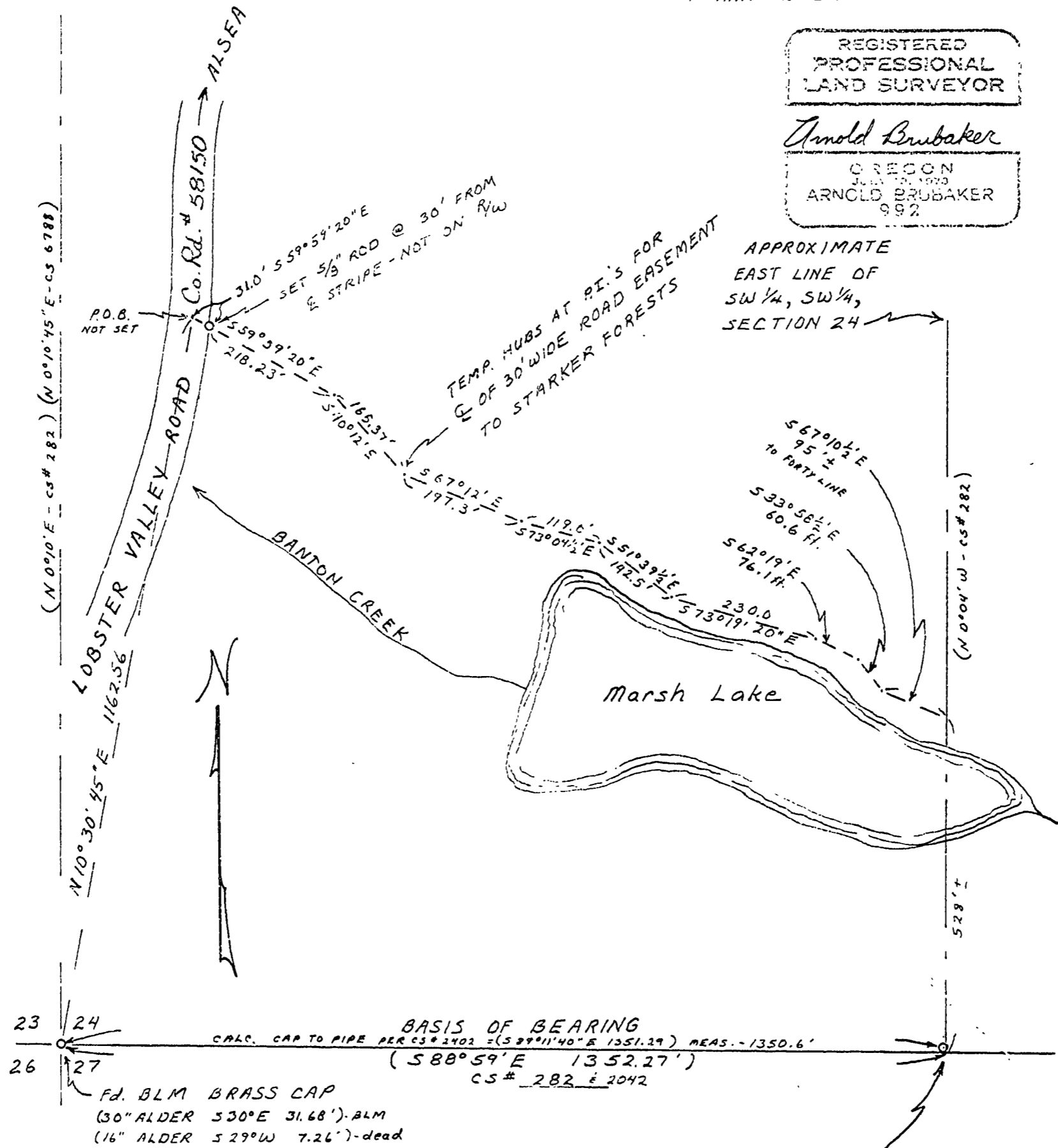
JUNE 7, 1979
REV. 6-13-79 AB.

BERT W UDELL RLS #1365
BT ARNOLD BRUBAKER RLS #492

REGISTERED
PROFESSIONAL
LAND SURVEYOR

Arnold Brubaker

OREGON
JULY 29, 1973
ARNOLD BRUBAKER
992



Beaton Co. Surveyors Office
 C.S. FILE NO. 6919
 FILING DATE 6-20-79
 FILE SIZE 8 1/2" X 14"
dw