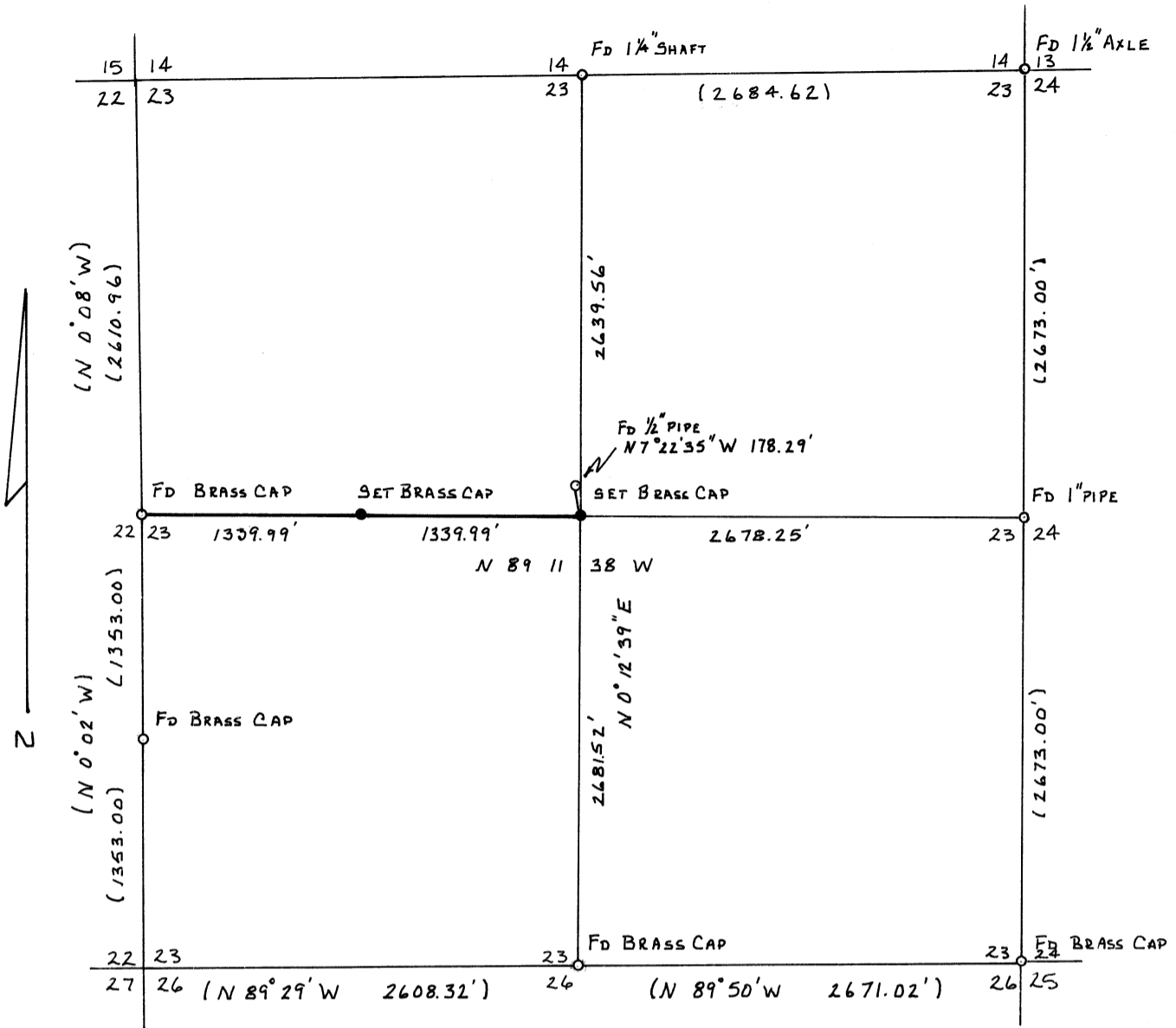


NOTE: SEE ADDENDUM 6987A



**NARRATIVE:**

BASIS OF BEARINGS - SOLAR OBSERVATION. A RANDOM TRAVERSE WAS RUN FROM A POINT NEAR THE CENTER OF SECTION TO THE QUARTER SECTION CORNERS. A 2" PIPE AND BRASS CAP WAS SET AT THE INTERSECTION OF LINES CONNECTING OPPOSITE QUARTER CORNERS. A 2" PIPE AND BRASS CAP WAS ALSO SET AT THE CW 1/4 CORNER FROM A POINT ON THE TRAVERSE TO THE WEST QUARTER CORNER. A 1/2" x 5' LENGTH OF IRON PIPE WAS FOUND LYING ON THE GROUND IN THE VICINITY OF THE CENTER QUARTER CORNER HOWEVER THERE IS NO RECORD THAT EITHER THIS PIPE OR THE PIPE FOUND N 7° 22' 38" W 178.29' FROM THE CENTER QUARTER CORNER WAS SET TO MARK THIS CORNER. THE SOLAR OBSERVATION WAS MADE USING A WILD T-2, ROELOFFS SOLAR PRISM AND REDUCED USING A K & E EPHEMERIS.

REFERENCES: CS 282 (HARD COPY), CS 6529, AND DEPENDENT RESURVEYS OF T14S, R8 W W.M., JUNE 7 1960 AND DECEMBER 11 1961, BLM.

Benton Co. Surveyors Office  
 C. S. FILE NO. 6987  
 FILING DATE 10-11-79  
 FILE SIZE 8 1/2" x 14"  
*di*

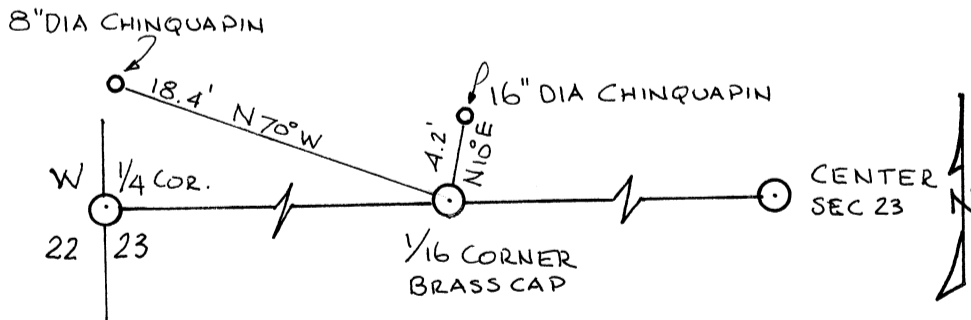
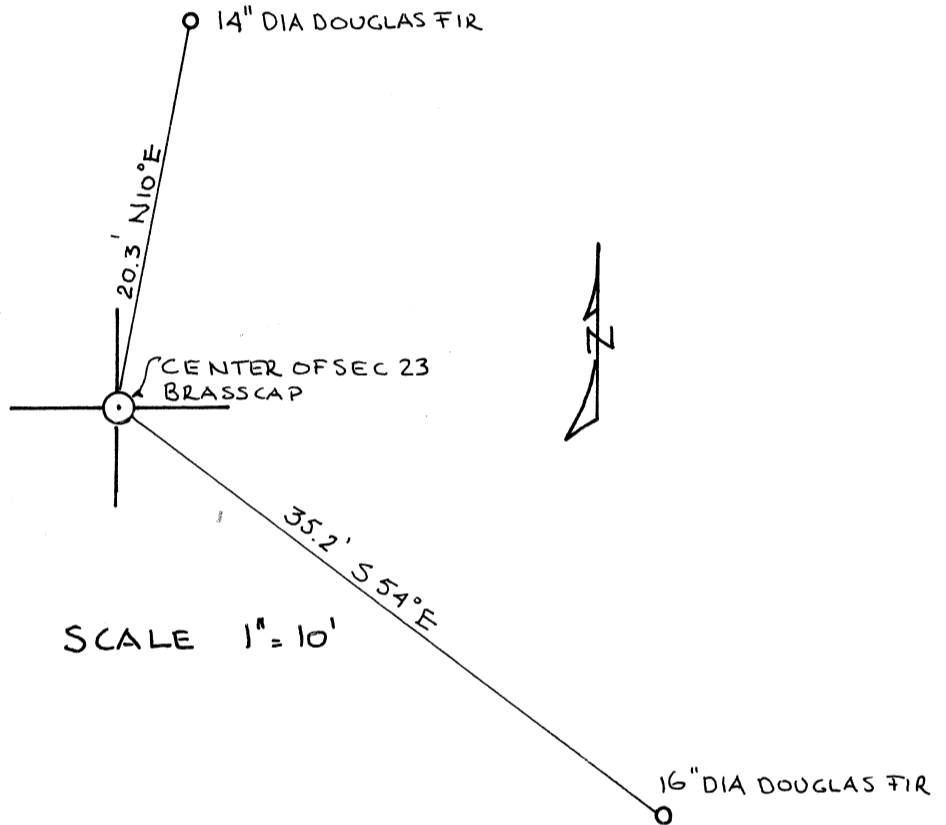
REGISTERED PROFESSIONAL LAND SURVEYOR  
*John Seaders*  
 OREGON  
 JOHN SEADERS  
 JULY 22, 1974  
 1014

<b>MSS INC</b> ENGINEERS PLANNERS SURVEYORS CORVALLIS, OR	<b>RECORD OF SURVEY FOR</b> <b>MARIAN F. BUNDY &amp; STARKER FORESTS</b>  SEC 23, T14S, R8W, W.M. BENTON Co., OREGON	DATE 8 Oct 79
		SCALE 1" = 1000'
		DRAWN TBP
		JOB G III

6987A

ADDENDUM TO C.S. 6987  
MARIAN F. BUNDY & STARKER FORESTS  
IN SEC 23 T14S, R8W., W.M. BENTON COUNTY, ORE.

RECORD OF BEARING TREES FOR MONUMENTS SET IN  
CS 6987 DTD 8 OCT '79



Benton Co. Surveyors Office  
 C. S. FILE NO. 6987-A  
 FILING DATE 10-30-79  
 FILE SIZE 8 1/2" x 14"  
 ds

REGISTERED  
 PROFESSIONAL  
 LAND SURVEYOR

*John Seaders*  
 OREGON  
 JOHN SEADERS  
 JULY 22, 1974  
 1014

<b>MSS INC.</b> ENGINEERS PLANNERS SURVEYORS CORVALLIS, OR.	RECORD OF SURVEY BEARING TREES CS 6987 SEC 23, T14S, R8W, W.M. BENTON Co.	Date 29 OCT 79
		Scale 1"=10'
		Drawn JS
		Job [ III

6987A