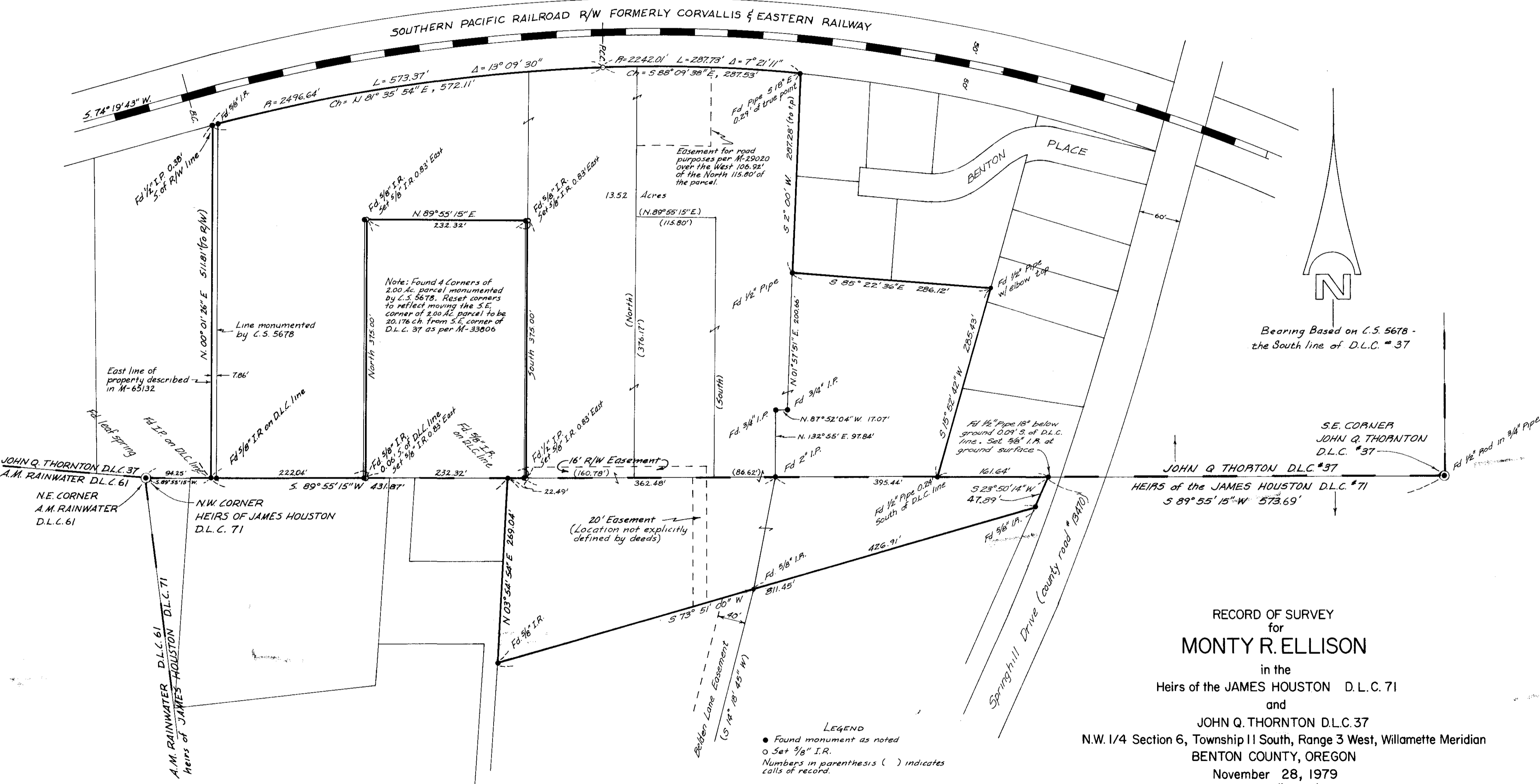


Note: Radii of Railroad R/W lines were obtained from the Southern Pacific Railroad Engineers Office  
The radii given were fitted to the location of the existing R.R. tracks.



SOUTHERN PACIFIC RAILROAD R/W FORMERLY CORVALLIS & EASTERN RAILWAY

13.52 Acres (N. 89° 55' 15" E.) (115.80')

Note: Found 4 Corners of 2.00 Ac. parcel monumented by C.S. 5678. Reset corners to reflect moving the S.E. corner of 2.00 Ac. parcel to be 20.176 ch. from S.E. corner of D.L.C. #37 as per M-33806

Bearing Based on C.S. 5678 - the South line of D.L.C. #37

RECORD OF SURVEY for MONTY R. ELLISON

in the Heirs of the JAMES HOUSTON D.L.C. 71 and JOHN Q. THORNTON D.L.C. 37

N.W. 1/4 Section 6, Township 11 South, Range 3 West, Willamette Meridian BENTON COUNTY, OREGON

November 28, 1979 Scale 1" = 100'

LEGEND  
● Found monument as noted  
○ Set 3/8" I.R.  
Numbers in parenthesis ( ) indicates calls of record.

Benton Co. Surveyors Office  
C. S. FILE NO. 7006  
FILING DATE 12-4-79  
FILE SIZE 18" x 24"

REGISTERED PROFESSIONAL LAND SURVEYOR  
HOWARD G. KRAUS  
1238

276 Hickory, N.W. Albany, OR

