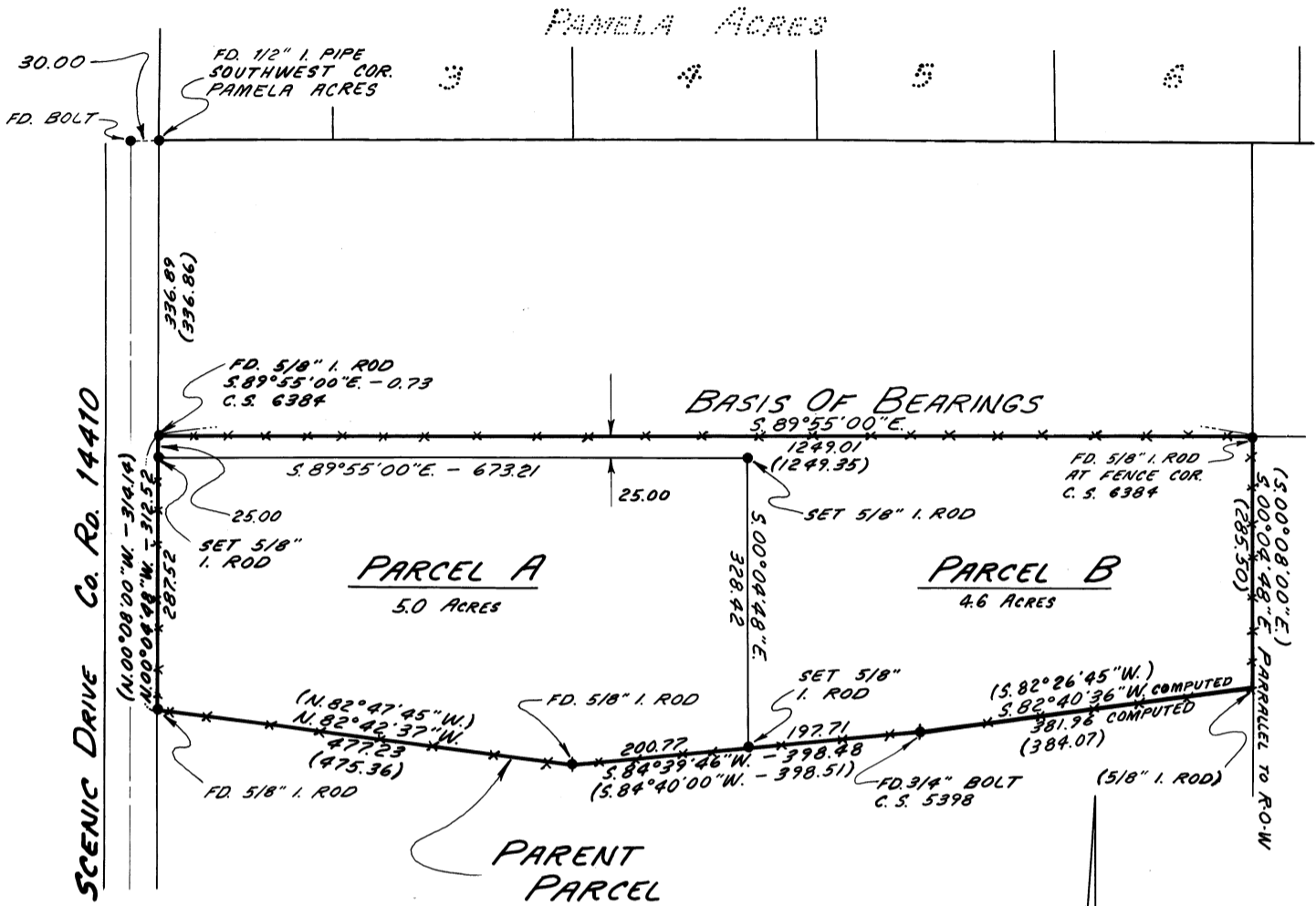


RECORD OF SURVEY
for RICH OLSON

in N 1/2 SEC. 26, T. 10S., R. 4W., W. M.
BENTON COUNTY, OREGON
DECEMBER 1979
SCALE: 1"=200'



LEGEND

- MONUMENT
- () RECORD DATA
- *—*— FENCE

NARRATIVE

- 1). Established R-O-W of Scenic Drive using monuments at southwest corner of PAMELA ACRES and southwest corner of Parcel A.
- 2). Established north line of Parent Parcel by holding monuments at each end. Please note that the intersection of R-O-W with north line shows the found monument near the northeast corner of Parent Parcel to be out of position.
- 3). The south line of the Parent Parcel was established by holding found monuments.
- 4). The southeast corner of the Parent Parcel was not located because it was not necessary for this survey.

REGISTERED
PROFESSIONAL
LAND SURVEYOR
Jack R. Burrell
OREGON
JACK R. BURRELL
16370

BENTON Co. Surveyors Office
C. S. REF. 7009
FILING DATE 12-12-79
FILE SIZE 8 1/2" x 14"
di