

SURVEY FOR FRED LOWTHER

Tax Lot 900, Farm Lot # 44
Browns Addition to Philomath
Henry Penland D.L.C. # 45
NE 1/4 S. 12, T. 12 S., R. 6 W., W. M.

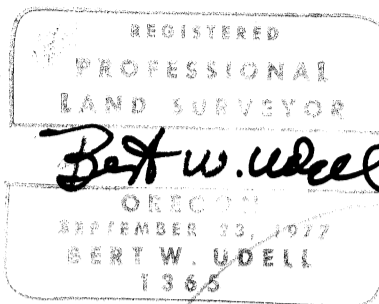
Surveyor - Bert W. Udell

Party Chief - Jesse Martin

Date: Oct-Nov, 1979 Scale: 1"=100'

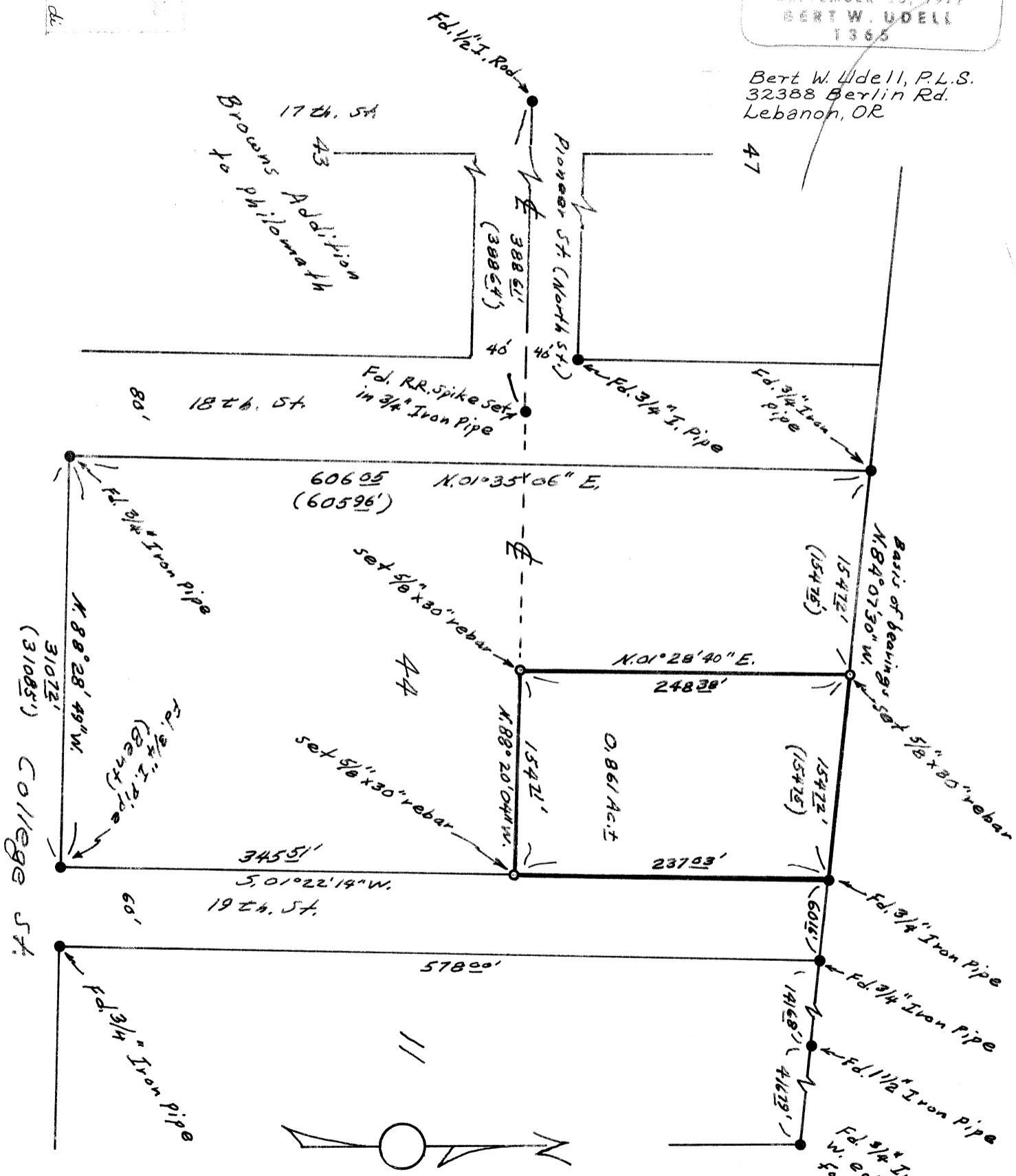
Corner Found ●

Corner Set ○



Bert W. Udell, P.L.S.
32388 Berlin Rd.
Lebanon, OR

7012
12-27-79
8 1/2" x 14"



Tied block corners to D.L.C. line and set the lot corners on south line of lot on line with extension of 1/2 of Pioneer St. and on the East line of the block and on the North-South split of the block.