

8865
Jan. 24, 1980

SURVEY FOR
U.S. FOREST SERVICE

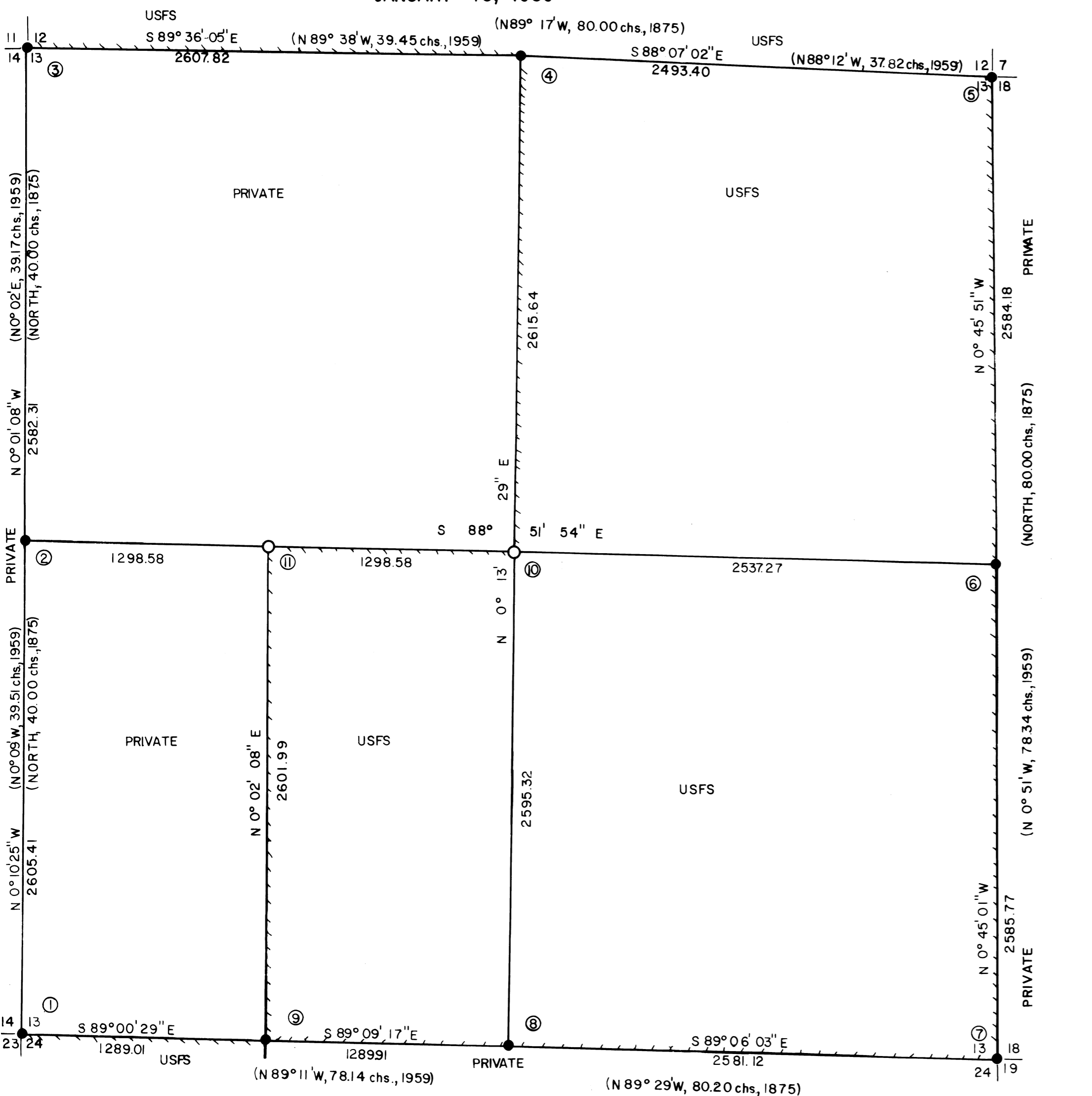
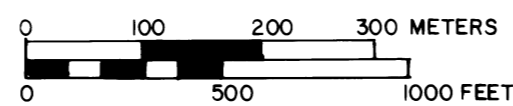
CHINQUAPIN EXCHANGE CADASTRAL CONTRACT NO. 53-04TO-0-020IN

SECTION 13, T. 12 S., R. 8 W., W.M.

LINCOLN COUNTY, OREGON

JANUARY 16, 1980

SCALE 1"=500'



LEGEND

- CORNER EVIDENCE FOUND
- CORNER SET BY SURVEY
- PROPERTY LINE POSTED WITH 6' POSTS & SIGNS
- () RECORD DATA

SURVEY HISTORY

THE BOUNDARIES OF SECTION 13 WERE SURVEYED BY E. P. HENDERSON IN 1875 AND RESURVEYED BY JOSEPH S. GAWRON, (B.L.M.) IN 1959-1960. CERTAIN CORNERS WERE RESET IN 1924 BY THE COUNTY SURVEYOR.

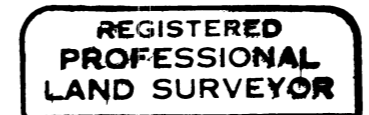
NO.	CORNER	MONUMENT	ACCESSORIES
①	T12S R8W S14 S13 S23 S24 1959	Found 1959 BLM brass cap on 2-1/2" I.P.	38" Fir bears N 45° E, 128.6 ft., mkd. with healed blaze. (1959) 24" Fir bears S 60-1/2° E, 147.1 ft., mkd. with healed blaze. (1959) 60" Fir stump bears S 43° W, 80.9 ft., mkd. with rotted blaze. (1875) 23" Fir bears S 50-1/2° W, 35.3 ft., mkd. with healed blaze. (1959) 12" Fir uproot bears N 20° W, 73.9 ft., mkd. with partly healed blaze. (1959) 1-1/4" I.P. bears N 20° E, 0.29 ft. 10" Fir bears N 25° W, 65.8 ft., mkd. T12SR8W S14 BT. (c.s. 8810)
②	1/4 S14 S13 T12S R8W 1959	Found 1959 BLM brass cap on 2-1/2" I.P.	55" Fir bears N 59° E, 78.9 ft., mkd. with healed blaze. (1875) 27" Fir bears S 38° E, 39.7 ft., mkd. with healed blaze. (1959) 12" Fir bears S 83° W, 6.2 ft., mkd. with healed blaze. (1959) 56" Fir bears N 30° W, 120.4 ft., mkd. with healed blaze. (1875)
③	T12S R8W S11 S12 S14 S13 1959	Found 1959 BLM brass cap on 2-1/2" I.P., alongside is 1-1/2" axle.	28" Fir bears N 60° E, 34.9 ft., mkd. with healed blaze. (1959) 23" Fir bears S 75° E, 17.9 ft., mkd. with healed blaze. (1959) 22" Fir bears S 49° W, 80.3 ft., mkd. with healed blaze. (1959) 20" Fir bears N 83° W, 68.1 ft., mkd. with healed blaze. (1959) Rotted fir stub bears N 25° E, 61.9 ft., no mks. (1924)
④	1/4 S12 S13 T12S R8W 1959	Found 1959 BLM brass cap on 2-1/2" I.P., alongside is 3/8" I.P.	34" Fir bears S 13° E, 21.4 ft., mkd. with healed blaze. (1924) 29" Fir bears S 1° E, 22.9 ft., mkd. with healed blaze. (1959) 13" Fir bears N 24° W, 33.4 ft., mkd. with healed blaze. (1959)
⑤	T12S S12 S7 S13 S18 R7W 1959	Found 1959 BLM brass cap on 2-1/2" I.P.	45" Fir bears N 66-1/2° E, 50.9 ft., mkd. with healed blaze. (1959) 15" Fir bears S 67° E, 24.6 ft., mkd. with healed blaze. (1959) 24" Fir bears S 16° W, 36.0 ft., mkd. with healed blaze. (1959) 18" Alder bears N 25-1/2° W, 56.5 ft., mkd. T12SR8WS12BT on bark. (1959)
⑥	1/4 S13 S18 R8W R7W T12S 1959	Found 1959 BLM brass cap on 2-1/2" I.P.	43" Fir bears N 60° E, 18.1 ft., mkd. with healed blaze. (1959) 42" Fir bears N 70° W, 29.7 ft., mkd. with healed blaze. (1959)
⑦	T12S R8W R7W S13 S18 S24 S19 1959	Found 1959 BLM brass cap on 2-1/2" I.P., alongside is 3/4" I.P. & unmarked stone, 12 x 14 x 10.	49" Fir stump bears N 15° E, 60.1 ft., mkd. with healed blaze. 48" Fir stump bears N 51° E, 61.8 ft., rotted, no mks. (1875) 64" Fir stump bears S 68° E, 29.1 ft., mkd. with healed blaze. 38" Fir snag bears S 25° E, 14.9 ft., mkd. with healed blaze. (1875) 31" Fir bears S 42-1/2° W, 153.7 ft., mkd. with healed blaze. (1959) 42" Fir bears N 89° W, 69.6 ft., mkd. with healed blaze. (1959)
⑧	1/4 S13 S24 T12S R8W 1959	Found 1959 BLM brass cap on 2-1/2" I.P.	16" Fir bears N 58° E, 25.1 ft., mkd. with healed blaze. (1959) 24" Fir bears S 26° W, 9.5 ft., mkd. with healed blaze. (1959)
⑨	W 1/6 S13 S24 T12S R8W 1959	Found 1959 BLM brass cap on 2-1/2" I.P.	18" Fir bears N 43° E, 11.9 ft., mkd. with healed blaze. (1959) 14" Fir bears S 34° W, 35.2 ft., mkd. with healed blaze. (1959)
⑩	T12S R8W C1/4 S13 LS 1102 1980	Set aluminum cap & pipe.	17" Fir bears N 42-1/2° E, 75.7 ft., mkd. C1/4 S13 BT. 19" Fir bears S 51° W, 42.4 ft., mkd. C1/4 S13 BT.
⑪	T12S R8W W 1/6 C—C S13 LS 1102 1980	Set aluminum cap & pipe.	25" Fir bears N 86° E, 51.4 ft., mkd. CW1/6 S13 BT. 18" Fir bears S 40-1/2° E, 59.7 ft., mkd. CW1/6 S13 BT.

NOTE: Field notes are found in Book 1, Contract No. 53-04TO-0-020IN. 6' posts with signs were set 3-5 feet from corners on lines posted. Bearings from solar observation. Monuments set are 3-1/4" aluminum caps on aluminum pipes with breakaway base. All new bearing trees have a brass washer mkd. LS 1102 nailed to lower blaze. Survey was made with theodolite and distance meter.

I, Norman D. Springer, a registered land surveyor in the State of Oregon, hereby certify that this plat and the notes hereon, or attached, are a correct representation of a survey I performed during December, 1979 and January, 1980, for the U.S. Forest Service, in accordance with the statutes of the State of Oregon and with the Articles of my contract.



Magnetic Declination 20 1/2° EAST



Norman D. Springer
REGISTERED PROFESSIONAL LAND SURVEYOR
OREGON
JULY 22, 1977
NORMAN D. SPRINGER
1102

Norman D. Springer
Norman D. Springer
Registered Land Surveyor
Oregon License No. 1102

Benton Co. Surveyors Office
7031
1-30-80
18" x 24"