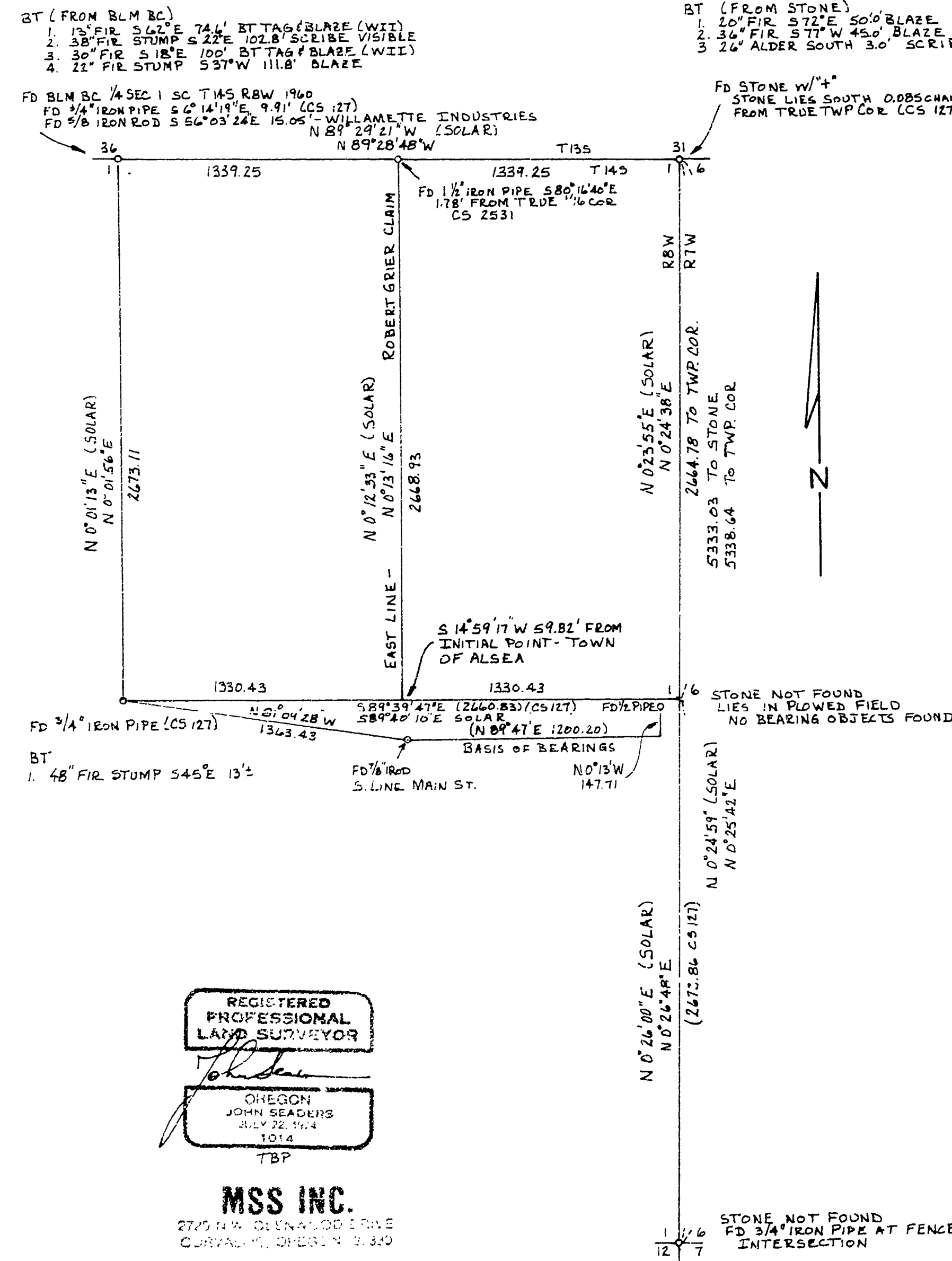


7072

7072



Benton County
 Surveyor's Office
 C. S. FILE NO. 7072
 FILING DATE: 5-2-89
 REC. CDP: 14" x 17"

RECORD OF SURVEY
 FOR
 ALSEA ASSEMBLY OF GOD
 JOHN KELLUM DLC 46, NE 1/4, SEC 1, T14S, R8W, W.M.
 BENTON COUNTY, OREGON
 SCALE 1" = 500'
 1 MAY 1980

NARRATIVE:
 THIS SURVEY WAS PERFORMED TO LOCATE THE EAST LINE OF THE ROBERT GRIER HOMESTEAD CLAIM IN THE W 1/2 OF THE NE 1/4 OF SECTION 1, PRIOR TO A SURVEY OF THE PROPERTY DESCRIBED IN BOOK 202 PAGE 162, BENTON COUNTY DEED RECORDS. BEARINGS ARE BASED ON THE TOWN OF ALSEA AS SHOWN IN CS 7068 (SOUTH LINE OF MAIN STREET). A RANDOM TRAVERSE WAS STARTED FROM THE RANDOM TRAVERSE USED IN CS 7068 AND TIED TO A 3/4" IRON PIPE AT THE C 1/4 COR. (CS 127); A 3/4" IRON PIPE AT THE SE COR., A STONE LYING 0.086 CH SOUTH OF THE NE (TOWNSHIP) COR., AND A BLM BRASS CAP AT THE N 1/4 COR. THE E 1/4 COR. FALLS IN A PLOWED FIELD SOUTH OF HWY 34 AND EAST OF THE SCHOOL BUT COULD NOT BE FOUND. THE LOCATION OF THIS CORNER WAS CALCULATED USING CS 127 DISTANCES FROM THE C 1/4 COR. AND SE COR., SECTION 1. THE LOCATION OF THE EAST LINE OF THE GRIER CLAIM WAS CALCULATED BETWEEN THE MIDPOINT OF THE LINE FROM THE BLM BRASS CAP TO THE TOWNSHIP CORNER AND THE MIDPOINT OF THE LINE FROM THE C 1/4 CORNER AND THE CALCULATED E 1/4 CORNER.

REFERENCES:
 CS 127 (HARDCOPY) CS 252 (HARDCOPY) CS 2531, CS 3391 CS 7068 AND BLM DEPENDENT RESURVEY 1960.

LEGEND
 o - FOUND MONUMENT
 () - INFORMATION OF RECORD
 WII - WILLAMETTE INDUSTRIES INC

REGISTERED
 PROFESSIONAL
 LAND SURVEYOR
 JOHN SEADERS
 JULY 22, 1914
 1014
 TBP

MSS INC.
 2772 N.W. OREGON ROAD
 CORVALLIS, OREGON 97330

7072

7072