

RECORD OF SURVEY
FOR

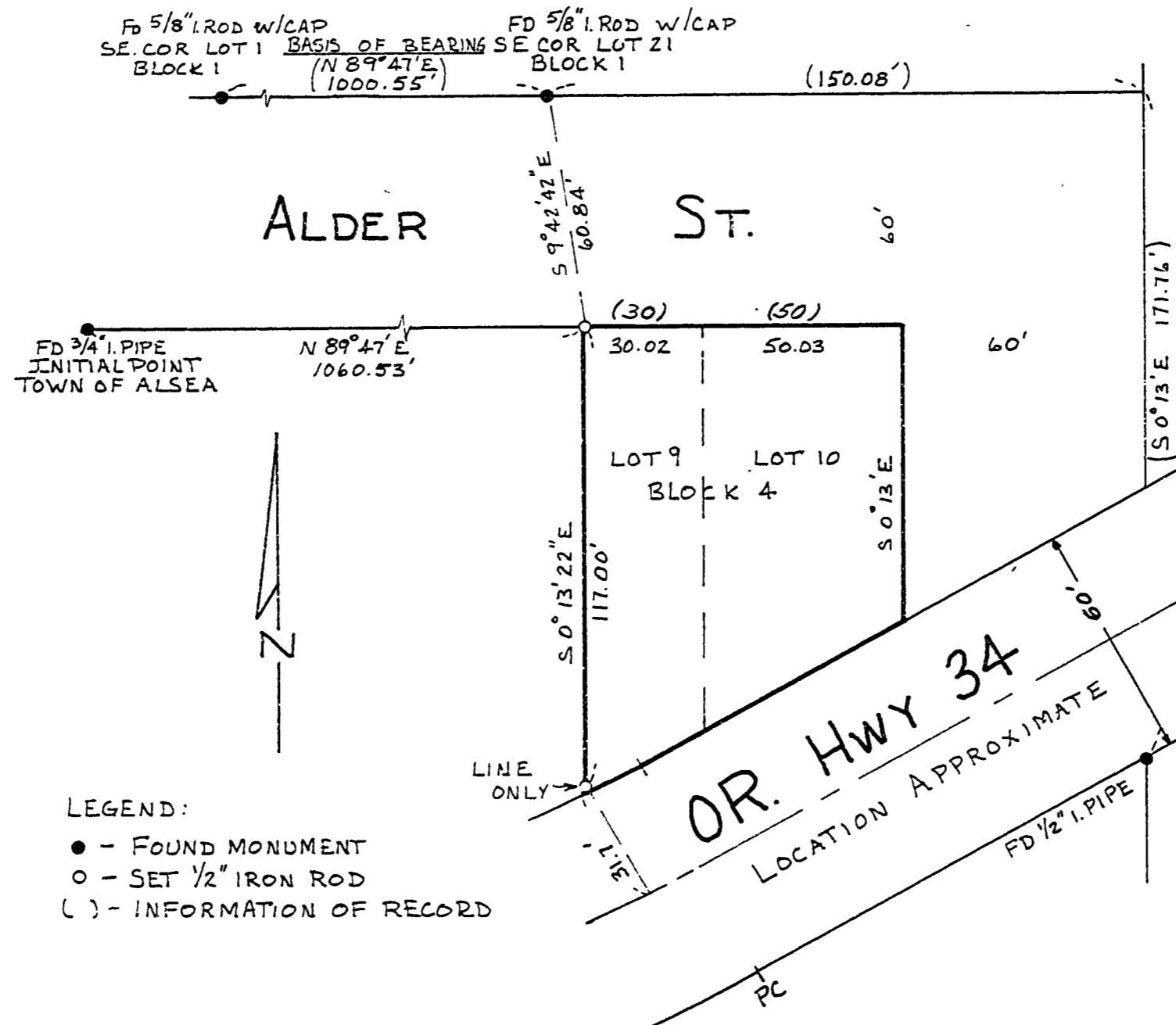
RAYMOND MURPHY

LOTS 9 & 10, BLOCK 4, ALSEA
NE 1/4, SEC 1, T14S, R8W, WM
BENTON COUNTY, OREGON

SCALE: 1" = 40'

JOHN KELLUM DLL No. 46

4 JUNE 1980
G 245



NARRATIVE:

THIS SURVEY IS TO MONUMENT THE WEST LINE OF LOT 9 BLOCK 4. BASIS OF BEARINGS IS THE NORTH LINE OF ALDER STREET (CS 7068 & 7073) LOTS 9 & 10 WERE PROPORTIONED ALONG THE SOUTH LINE OF ALDER ST. AND THE SOUTH LINE OF MAIN ST. (ORIGINAL) GIVING STREETS PLATTED WIDTHS. MONUMENTS WERE SET RADIALLY FROM A POINT IN LOT 9 ESTABLISHED BY INTERSECTION FROM A RANDOM TRAVERSE. THE MONUMENT NEAR THE S.W. CORNER OF LOT 9 IS A POINT ON THE WEST LINE ONLY, 31.7 FEET FROM THE PAVEMENT CENTERLINE. AND IS NOT AT THE PROPERTY CORNER. NO SURVEYS OF THIS PORTION OF HIGHWAY 34 WERE FOUND.

REGISTERED
PROFESSIONAL
LAND SURVEYOR

OREGON
JOHN SEADERS
JULY 22, 1974
1014

T.B.P.

MSS INC.

2720 N.W. GLENWOOD DRIVE
GORVALLIS, OREGON 97330

Benton County
Surveyor's Office

C. S. FILE NO. 7084

PLUMB DATE 6-5-80

FILE SIZE 8 1/2" x 14"

de