

M-19371-80

180 Aug 7 PM 2:30

David C. Buel - Director of Records & Planning  
Benton County  
Dilley Sheddling - Dep. City Clerk

# RICHARD D. and GEORGIA S. EWING

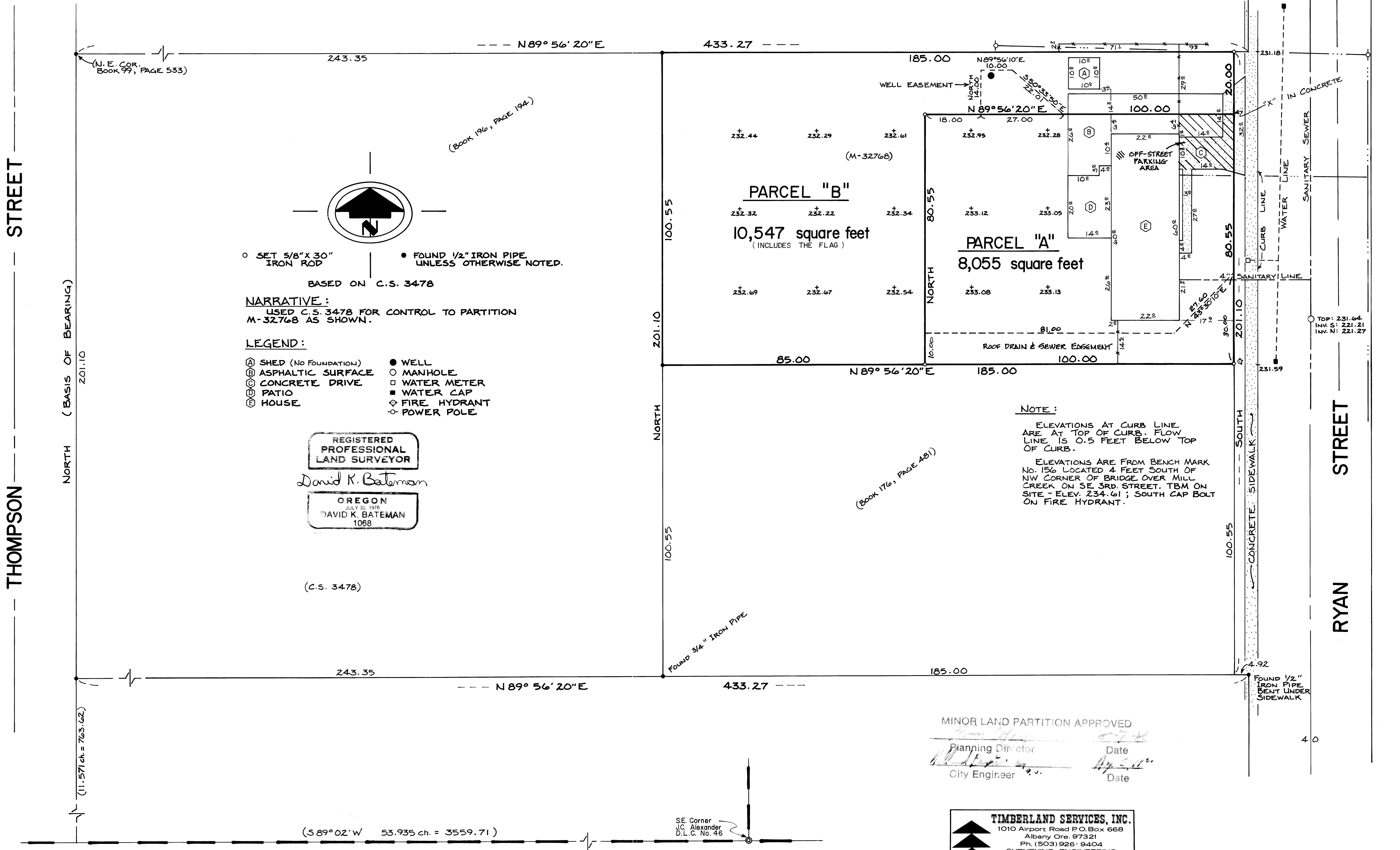
In the J.C. ALEXANDER D.L.C. No. 46, SW1/4 NE1/4 Sec. 11, T.12S., R.5W., W.M.  
City of Corvallis, Benton County, Oregon

Scale: 1" = 20'

July 8, 1980

Benton County  
Surveyor's Office  
7101  
7-23-80  
18" x 24" d

24" STORM LINE  
TOP: 230.74  
INV: 223.30



MINOR LAND PARTITION APPROVED  
Planning Director \_\_\_\_\_ Date \_\_\_\_\_  
City Engineer \_\_\_\_\_ Date \_\_\_\_\_

**TIMBERLAND SERVICES, INC.**  
1010 Airport Road P.O. Box 668  
Albany Ore. 97321  
Ph: (503) 926-3404  
SURVEYING ENGINEERING  
LAND USE PLANNING  
FORESTRY CONSULTING

7101

7101

7101

7101