

APPLEGATE STREET

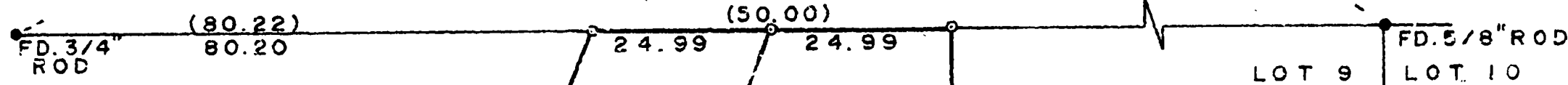
MINOR LAND PARTITION
for
KEN MEYERS

SCALE: 1" = 20'

JULY 28, 1980

NW CORNER
LOT 5

(S 89° 59' E 640.22) 640.03 BASIS OF BEARINGS PER PLAT



BLOCK 2



LOCATION:

LOT 1, BLOCK 1
ASH-BROOK ESTATES
SECOND ADDITION
S.E. 1/4 SECTION 7
T.12 S., R.5 W., W.M.
PHILOMATH
BENTON COUNTY, OREGON
NORRICE P. NEWTON D.L.C. # 72

LEGEND:

* MONUMENT FOUND AS NOTED
o 5/8" x 30" IRON ROD SET
() RECORD INFORMATION

NARRATIVE

1. BEARINGS ARE BASED ON THE SOUTH LINE OF APPLEGATE STREET AS PER ASH-BROOK ESTATE S SECOND ADDITION PLAT
2. THE N.E. & N.W. CORNERS OF LOT 1, BLOCK 1 WERE RE-ESTABLISHED BY PROPORTIONING BETWEEN THE TWO FOUND MONUMENTS ON THE SAME LINE.

PARCEL A
0.186 AC.

PARCEL B
0.250 AC.

FD. 1/2" ROD

N 89° 59' 58" W 130.29
(N 89° 59' W 130.22)

FD. 5/8" ROD

REGISTERED
PROFESSIONAL
LAND SURVEYOR

Darryl W. Harms

OREGON
MAY 20, 1979
DARRYL W. HARMS
1978

SURVEYORS' ADDRESS:
2095 N.W. LEWISBERG AVE.
CORVALLIS, OREGON 97330