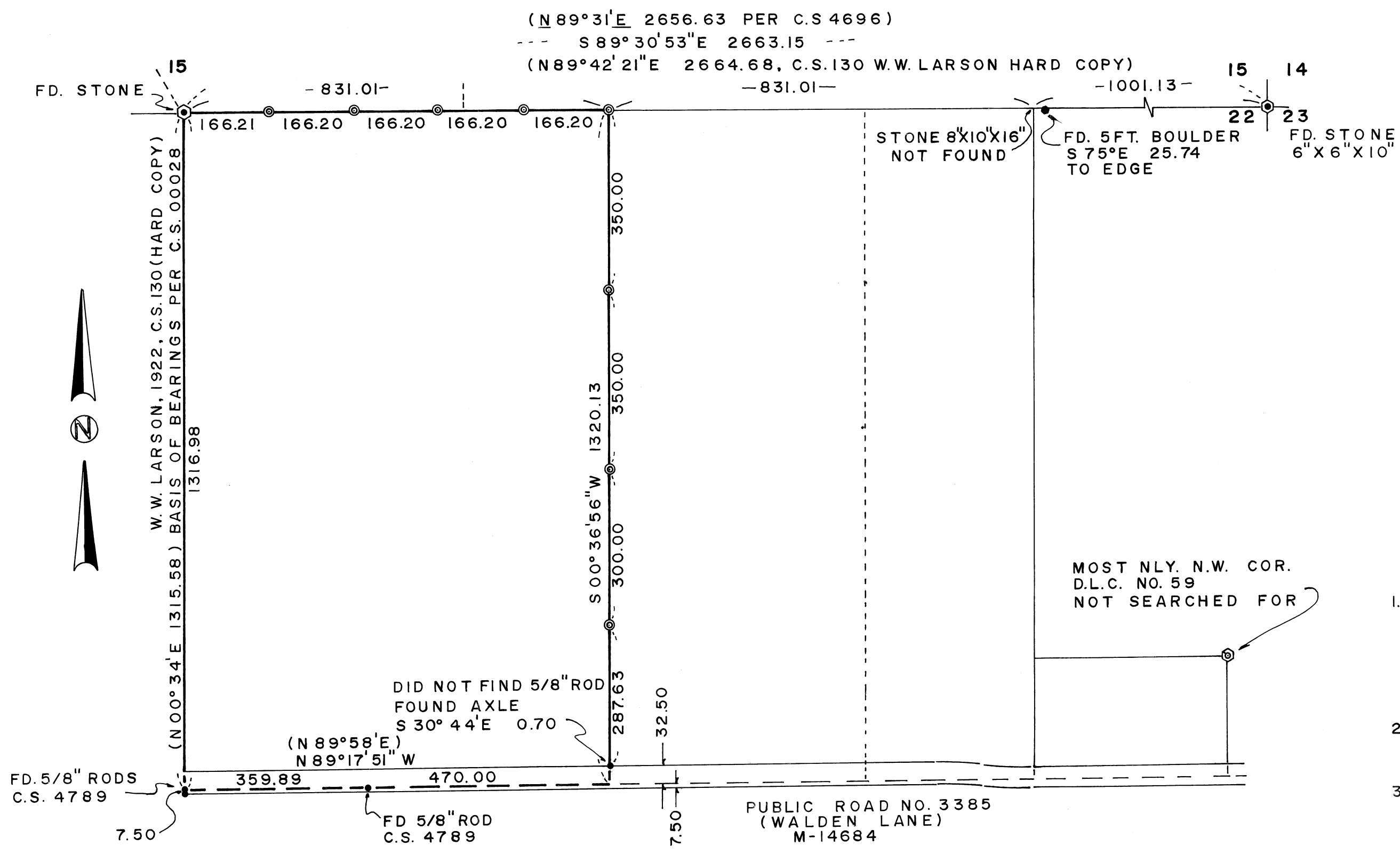


MAP OF SURVEY for D. W. FOSTER

SCALE: 1"=200' JAN. 3, 1981



LOCATION

N.E. 1/4 SEC. 22, T.12S., R.6W., W.M.
BENTON COUNTY, OREGON

LEGEND

- MONUMENT FOUND AS NOTED
- ⊙ 5/8" X 30" IRON ROD SET
- () RECORD INFORMATION

NARRATIVE

1. BEARINGS ARE BASED ON THE WEST LINE OF THE N.E. 1/4 OF SECTION 22 (N00°34'E) PER 1922 SURVEY BY W.W. LARSON (C.S. 130 HARD COPY) AS DEFINED BY THE LINE BETWEEN THE STONE AT THE NORTH QUARTER CORNER OF SECTION 22 AND THE NORTHMOST 5/8" ROD (C.S. 4789)
2. A TYPICAL RANDOM TRAVERSE WAS USED FROM WHICH FOUND MONUMENTS WERE TIED AND NEW ONES SET AS SHOWN.
3. THE CALCULATED POSITION FOR THE STONE (NOT FOUND) ON THE NORTH LINE OF SECTION 22 FELL N75°W 0.39 CHAINS FROM THE EDGE OF THE 5FT. BOULDER THEREFOR THE RECORD DISTANCE FROM THE NORTH QUARTER CORNER TO THE STONE (25.182 CHAINS) WAS DIVIDED EQUALLY TO DETERMINE THE NORTHEAST CORNER OF THIS SURVEY

REGISTERED
PROFESSIONAL
LAND SURVEYOR
Darryl W. Hamm
OREGON
DARRYL W. HAMM
1981

SURVEYOR'S ADDRESS

P.O. BOX 1051
CORVALLIS, OREGON
PHONE: 745-5694

Benton County
Surveyor's Office
C. S. FILE NO. 7196
FILING DATE 1-7-1981
FILE SIZE 18x24 RP