

Benton County
Surveyors Office

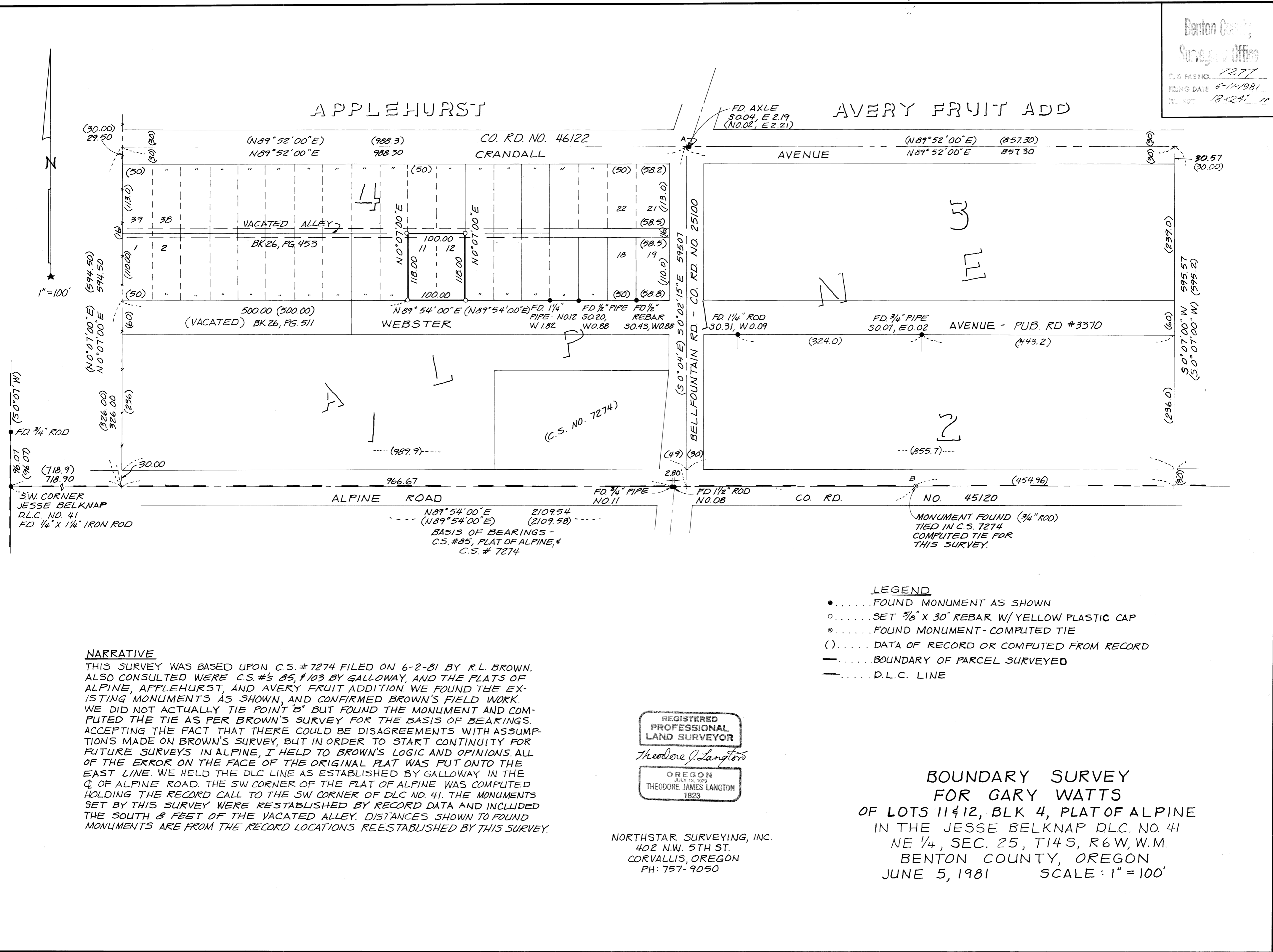
C.S. FILE NO. 7277

FILED DATE 6-11-1981

FILE NO. 18-2A

APPLEHURST

AVERY FRUIT ADD



- LEGEND**
- FOUND MONUMENT AS SHOWN
 - SET 5/8" X 30" REBAR W/ YELLOW PLASTIC CAP
 - ⊙..... FOUND MONUMENT - COMPUTED TIE
 - ()..... DATA OF RECORD OR COMPUTED FROM RECORD
 - BOUNDARY OF PARCEL SURVEYED
 - - - - - D.L.C. LINE

NARRATIVE
 THIS SURVEY WAS BASED UPON C.S. #7274 FILED ON 6-2-81 BY R.L. BROWN. ALSO CONSULTED WERE C.S. #5, #103 BY GALLOWAY, AND THE PLATS OF ALPINE, APPLEHURST, AND AVERY FRUIT ADDITION. WE FOUND THE EXISTING MONUMENTS AS SHOWN, AND CONFIRMED BROWN'S FIELD WORK. WE DID NOT ACTUALLY TIE POINT "B" BUT FOUND THE MONUMENT AND COMPUTED THE TIE AS PER BROWN'S SURVEY FOR THE BASIS OF BEARINGS. ACCEPTING THE FACT THAT THERE COULD BE DISAGREEMENTS WITH ASSUMPTIONS MADE ON BROWN'S SURVEY, BUT IN ORDER TO START CONTINUITY FOR FUTURE SURVEYS IN ALPINE, I HELD TO BROWN'S LOGIC AND OPINIONS. ALL OF THE ERROR ON THE FACE OF THE ORIGINAL PLAT WAS PUT ONTO THE EAST LINE. WE HELD THE DLC LINE AS ESTABLISHED BY GALLOWAY IN THE Q OF ALPINE ROAD. THE SW CORNER OF THE PLAT OF ALPINE WAS COMPUTED HOLDING THE RECORD CALL TO THE SW CORNER OF DLC NO. 41. THE MONUMENTS SET BY THIS SURVEY WERE REESTABLISHED BY RECORD DATA AND INCLUDED THE SOUTH 8 FEET OF THE VACATED ALLEY. DISTANCES SHOWN TO FOUND MONUMENTS ARE FROM THE RECORD LOCATIONS REESTABLISHED BY THIS SURVEY.

REGISTERED
 PROFESSIONAL
 LAND SURVEYOR
Theodore J. Langton
 OREGON
 JULY 13, 1979
 THEODORE JAMES LANGTON
 1823

NORTHSTAR SURVEYING, INC.
 402 N.W. 5TH ST.
 CORVALLIS, OREGON
 PH: 757-9050

**BOUNDARY SURVEY
 FOR GARY WATTS**
 OF LOTS 11 & 12, BLK 4, PLAT OF ALPINE
 IN THE JESSE BELKNAP DLC. NO. 41
 NE 1/4, SEC. 25, T14S, R6W, W.M.
 BENTON COUNTY, OREGON
 JUNE 5, 1981 SCALE: 1" = 100'