

7290

DRAWING NUMBER
7290

PLAN HOLD CORPORATION • IRVINE, CALIFORNIA
REORDER BY NUMBER 075AR
POSITION EDGE OF PRINT ON THIS LINE

7290

DRAWING NUMBER
7290

PLAN HOLD CORPORATION • IRVINE, CALIFORNIA
REORDER BY NUMBER 075AR
POSITION EDGE OF PRINT ON THIS LINE

MAP OF SURVEY for PEG MAYO

JUNE 27, 1981 SCALE: 1" = 50'

LEGEND

- MONUMENT FOUND (AS NOTED)
- 5/8" X 30" IRON ROD SET
- () RECORD INFORMATION

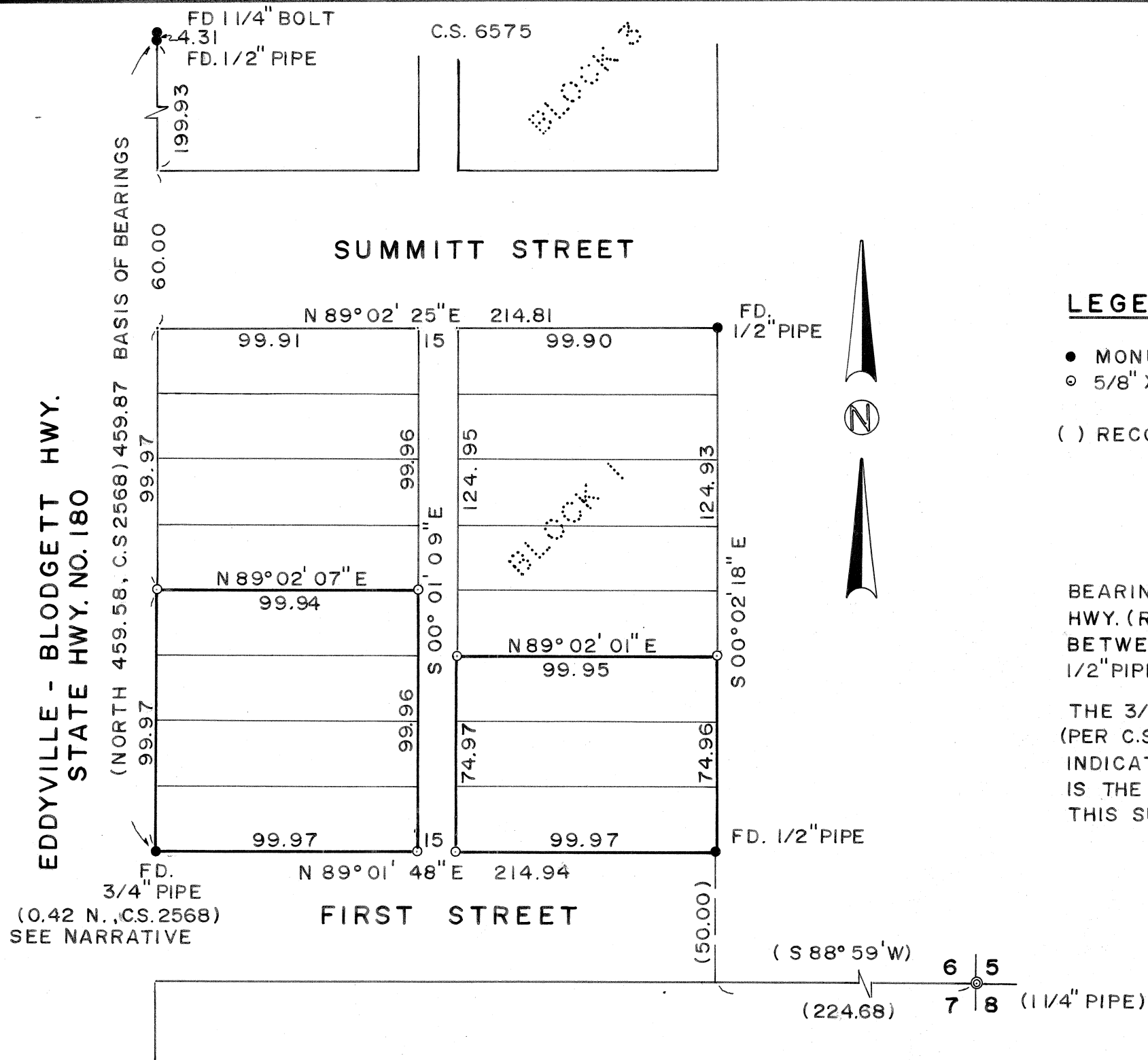
LOCATION

BLOCK 1, SUMMITTVILLE
S.E. 1/4, SEC. 6, T.11S., R.7W., W.M.
BENTON COUNTY, OREGON

NARRATIVE

BEARINGS ARE BASED ON THE EAST LINE OF THE EDDYVILLE - BLODGETT HWY. (RAILROAD STREET)(NORTH) PER C.S. 2568 AS DEFINED BY THE LINE BETWEEN THE FOUND 3/4" PIPE AT THE S.W. CORNER OF BLOCK 1 AND THE FOUND 1/2" PIPE AT THE N.W. CORNER OF BLOCK 3, SUMMITTVILLE.

THE 3/4" PIPE AT THE S.W. CORNER OF BLOCK 1 IS SHOWN AS BEING NORTH 0.42 FT. (PER C.S. 2568) FROM THE BLOCK CORNER. MEASUREMENTS TAKEN IN THIS SURVEY INDICATE THAT, RELATIVE TO THE REST OF THE FOUND MONUMENTS, THE 3/4" PIPE IS THE BLOCK CORNER AND WAS USED AS SUCH TO PROPORTION THE BLOCK IN THIS SURVEY.



REGISTERED
PROFESSIONAL
LAND SURVEYOR

Darryl W. Harms

OREGON
JULY 30, 1976
DARRYL W. HARMS
1079

SURVEYOR'S ADDRESS

P.O. BOX 1051
CORVALLIS, OREGON
PHONE 745-5694

Benton County
Surveyor's Office

C. S. FILE NO. 7290
FILING DATE 7-1-1981
FILE SIZE 11 X 17 dmp