

7308

DRAWING NUMBER  
7308

PLAN HOLD CORPORATION • IRVINE, CALIFORNIA  
REORDER BY NUMBER 075AR

DRAWING NUMBER  
7308

PLAN HOLD CORPORATION • IRVINE, CALIFORNIA  
REORDER BY NUMBER 075AR

7308

# MAP OF SURVEY

for

PAUL ORTMAN

SCALE: 1"=100' AUG. 1, 1981

## LOCATION

A PORTION OF: LOT 1, BLOCK 2,  
MARY'S RIVER ESTATES  
PATRICK EGAN D.L.C. NO. 41  
S.W. 1/4 SEC. 35, T.11S., R.6 W., W.M.,  
BENTON COUNTY, OREGON.

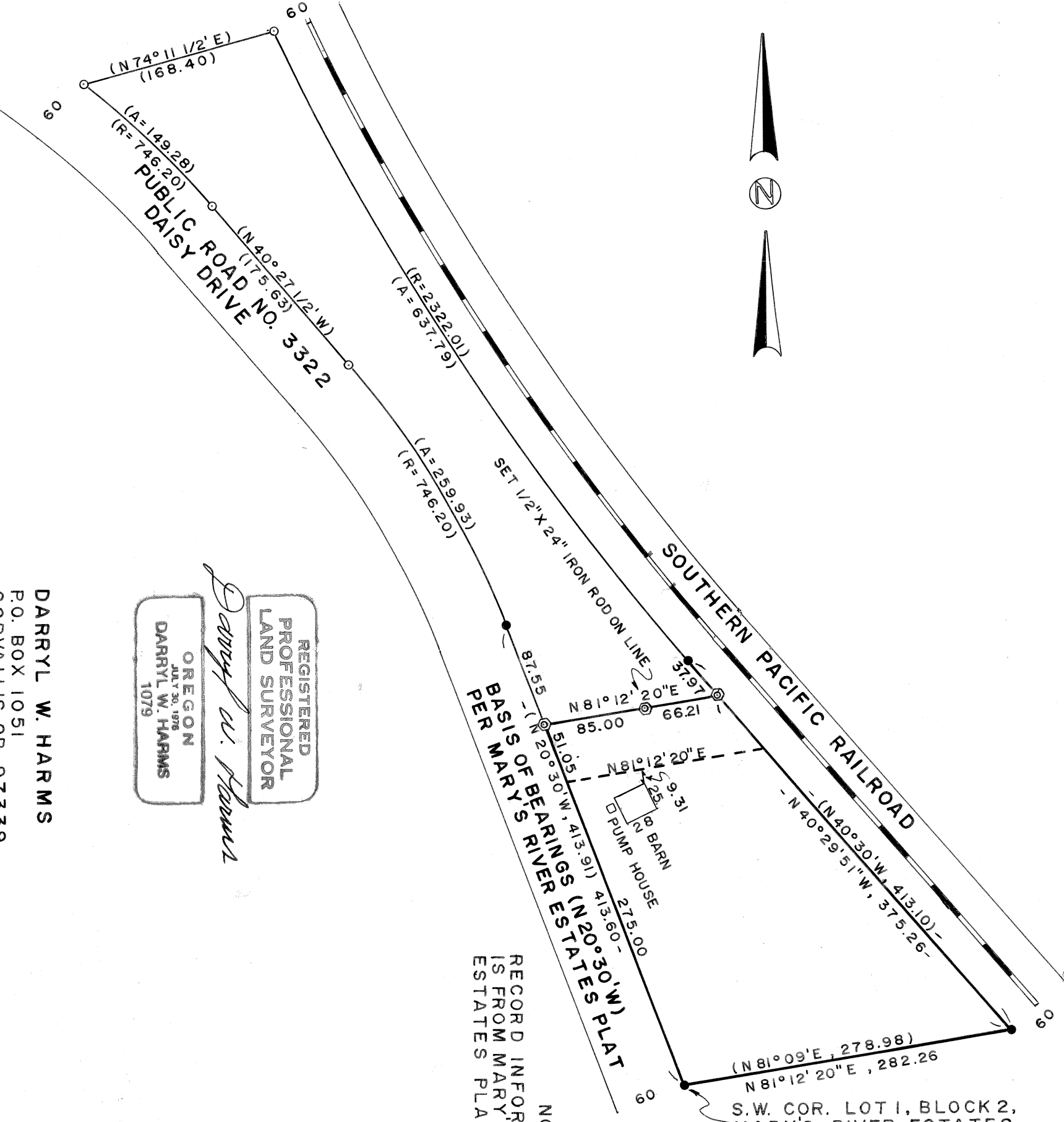
## LEGEND

- 5/8" IRON ROD FOUND
- MONUMENT OF RECORD
- ( ) RECORD INFORMATION
- ⊗ 5/8"X30" IRON ROD SET EXCEPT AS NOTED

## NARRATIVE

BEARINGS ARE BASED ON A PORTION OF THE WESTERLY LINE OF LOT 1, BLOCK 2, AS SHOWN. A RANDOM TRAVERSE WAS USED TO TIE TOGETHER THE FOUND MONUMENTS, THEN I SET A 5/8" ROD ON THE WESTERLY LINE OF AND AT THE DEED DISTANCE FROM THE SOUTHWEST CORNER OF LOT 1, BLOCK 2. A 5/8" ROD WAS ALSO SET ON THE WESTERLY RAILROAD RIGHT OF WAY LINE AND ON A LINE PARALLEL WITH THE SOUTH LINE OF LOT 1, BLOCK 2.

NOTE: → RECORD INFORMATION IS FROM MARY'S RIVER ESTATES PLAT.



REGISTERED  
PROFESSIONAL  
LAND SURVEYOR

*Darryl W. Harms*

OREGON  
JAN 30, 1978  
DARRYL W. HARMS  
1079

DARRYL W. HARMS  
P.O. BOX 1051  
CORVALLIS, OR. 97339  
PH. (503) 745-5694

Benton County  
Surveyor's Office

C. S. FILE NO. 7308  
FILING DATE 11/17  
FILE SIZE 8-19-1981  
WJP