

C.S. # 731

Hardcopy 14-8 #9

also see notes in file

F.B. 25-71

71

F1B #25, PG 71-72

Sec 23, T 14 S R 8 W

#731 Survey #282 cont.

Began at $\frac{3}{4}$ " brass rod
which is 40 cor South of NW
cor Sec 24. Run West

A.	6.108		
1	5.810		12-40
	6056		
2	6.47		36°
	0.880		
3	1.117		16°
	1.160		
4	5.955		12 $\frac{1}{2}$ °
	6.100		
5	.135		12 $\frac{1}{2}$ °
	.140		

6 Tot 19.772 hit 0.206 N of cor.

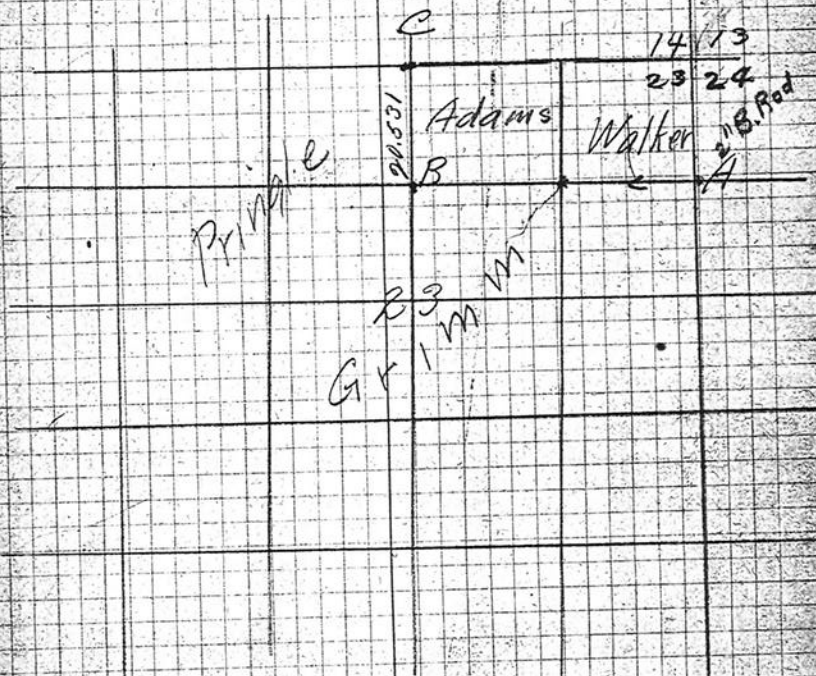
Oak 12" N 60 $\frac{1}{2}$ ° E .073

7	1.384		
	1.450		17° 40'
8	4.628	10° 35'	50.206 - 2°
9	5.285	0° 35' R	0.206 - 2 $\frac{1}{2}$ °
	1.963		
10	2.055		1.259 + 17 $\frac{1}{2}$ °
	4.900		
11	4.916		2.795 + 4 $\frac{1}{4}$ °
12	1.613		1.330
13	Set $\frac{1}{2}$ " shaft		1.346

Start at B run N at angles to line

B	1.78	290° 05' R	Mag Br. N 0° 30' W
	3.214		
14	3.294		Correct W 2° 10' - 6 $\frac{1}{2}$ °
	2.715		
15	2.740	.180	- 8°
	5.828		
16	3.972	1287	- 11 $\frac{1}{2}$ °

Nov 5, 1920

For { Grimm
Prindle
Adams

1.78
3.214
2.715
5.828
4.836
2.160

20.531

17 4.836 .517 +1°
 18 ~~2.308~~ 20.112 hit cor C. 10 1/4°
~~2.945~~

Set on transit pt which
 is Nat shaft .346

B.S. on 12

5.788 +10'
~~5.878~~ 92° 47' +35°
 2.120
~~2.591~~
 3.095 +5 3/4'
~~3.110~~
 6.062 +4 1/4°
~~6.080~~
 3.185 Set 2" fir limb +10°

5.788
 2.120
 3.095
 6.062

 17.065
 3.185

 20.250