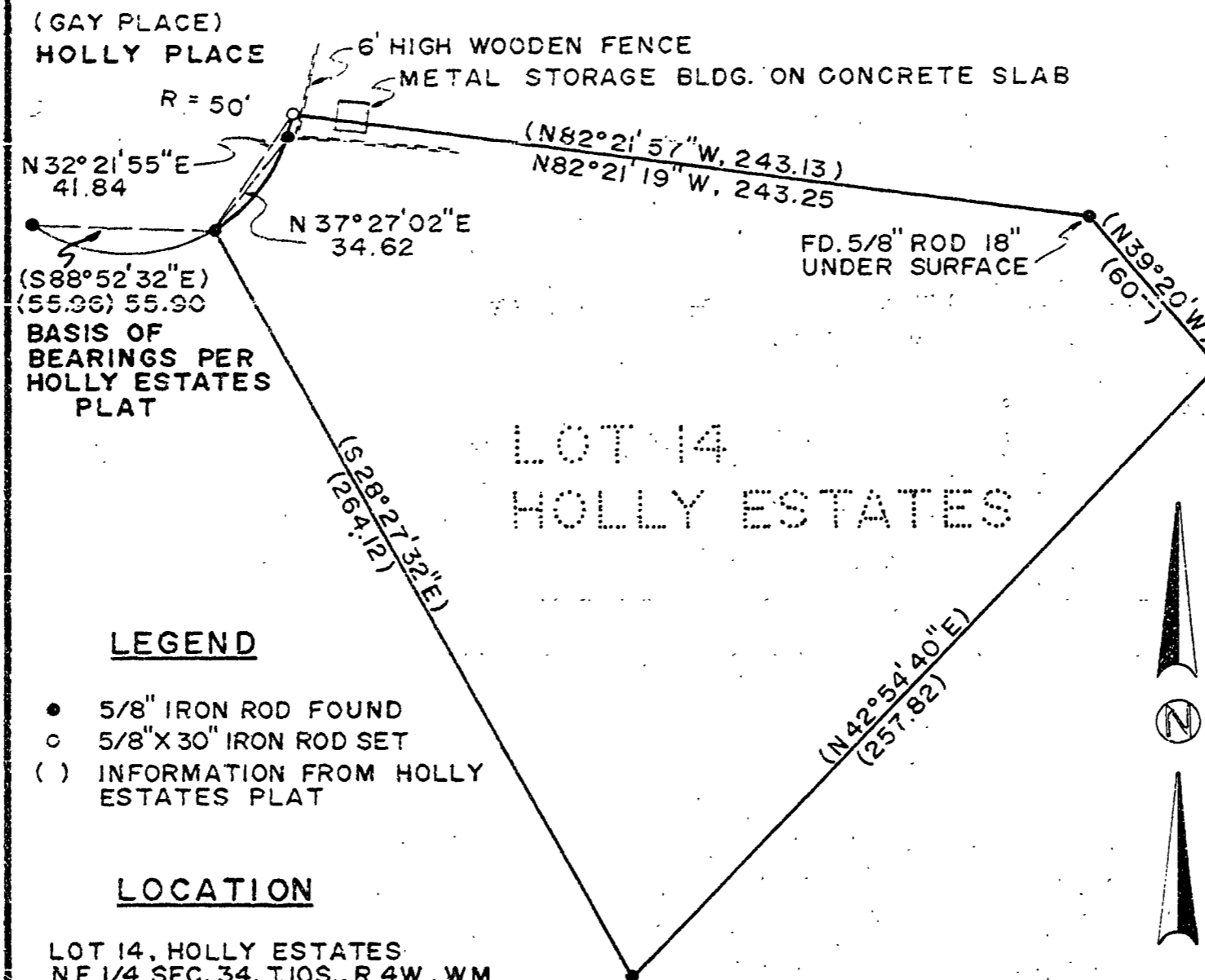


# MAP OF SURVEY for BILL GRAF

SCALE: 1"=50' AUG. 29, 1981



### LEGEND

- 5/8" IRON ROD FOUND
- 5/8" X 30" IRON ROD SET
- ( ) INFORMATION FROM HOLLY ESTATES PLAT

### LOCATION

LOT 14, HOLLY ESTATES  
N.E. 1/4 SEC. 34, T. 10S., R. 4W., W.M.  
BENTON COUNTY, OREGON  
Wm. HARRISON JOHNSON DLC NO. 63

### NARRATIVE

FROM A RANDOM POINT IN HOLLY PLACE, I TIED THE THREE FOUND MONUMENTS ON HOLLY PLACE, THE ANGLE POINT IN THE NORTH LINE OF LOT 14 AND MADE A ROUGH TIE ( $\pm 0.5'$ ) TO THE MOST SOUTHERLY CORNER OF LOT 14.  
I DIDN'T FIND ANY OTHER MONUMENTS ON THE EASTERLY SIDE OF THE CUL-DE-SAC.  
I SET A 5/8" X 30" IRON ROD AT THE HOLLY ESTATES PLAT BEARING AND DISTANCE (N32°21'55"E, 41.84') FROM THE MOST WESTERLY CORNER OF LOT 14.

REGISTERED  
PROFESSIONAL  
LAND SURVEYOR

*Darryl W. Harms*

OREGON  
JULY 30 1976  
DARRYL W. HARMS  
1079

P.O. BOX 1051  
CORVALLIS, OR. 97339  
745-5694

Benton County  
Surveyor's Office

C. S. FILE NO. 7317  
FILING DATE 9-10-81  
FILE SIZE 8 1/2 x 14  
W.P.