

DRAWING NUMBER  
7330

PLAN HOLD CORPORATION • IRVINE, CALIFORNIA  
RECORDER BY NUMBER 0754R  
POSITION EDGE OF PRINT ON THIS LINE

DRAWING NUMBER  
7330

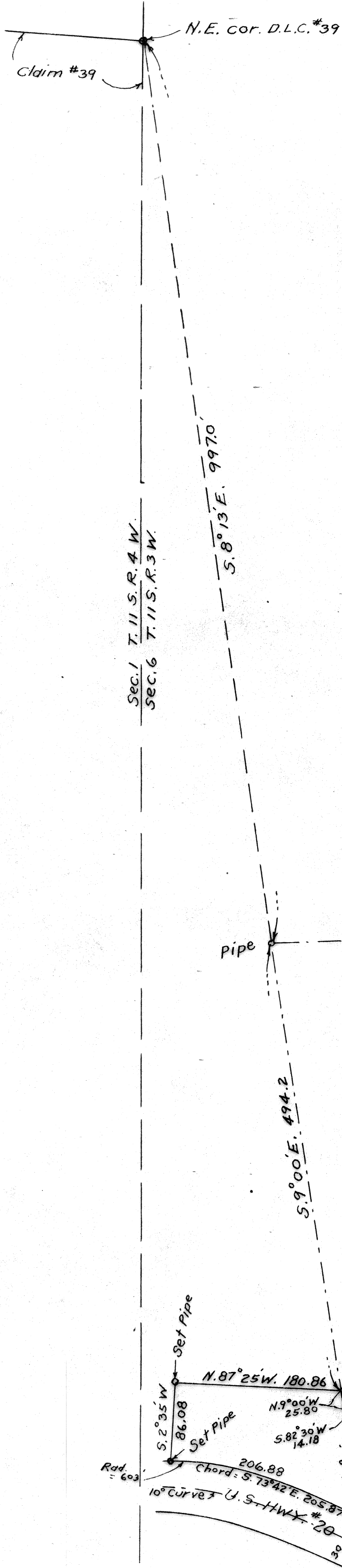
PLAN HOLD CORPORATION • IRVINE, CALIFORNIA  
RECORDER BY NUMBER 0754R  
POSITION EDGE OF PRINT ON THIS LINE

DRAWING NUMBER  
7330

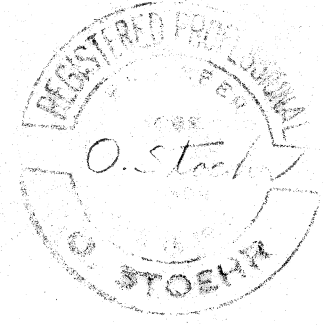
PLAN HOLD CORPORATION • IRVINE, CALIFORNIA  
RECORDER BY NUMBER 0754R  
POSITION EDGE OF PRINT ON THIS LINE

DRAWING NUMBER  
7330

PLAN HOLD CORPORATION • IRVINE, CALIFORNIA  
RECORDER BY NUMBER 0754R  
POSITION EDGE OF PRINT ON THIS LINE



**Benton County**  
**Surveyor's Office**  
 C.S. FILE NO. **7330**  
 FILING DATE **9-29-1981**  
 FILE SIZE **19x9**



**SURVEY IN SEC. 6**  
**T. 11 S. R. 3 W., W.M.**  
**BENTON CO., ORE.**  
 June, 1958. 1" = 100'  
 O. Stoehr  
 425 Builder's Exch. Portland, Ore.

\* This survey, found in survey records Sept. 1981. A current C.S. was issued because no records of this map could be found in the county survey records. Danna Ingram "Dep. Co. Surveyor"