

C.S. # 734

Hardcopy 14-6 # 16

also see notes in file

F. B. 25-47

47

F/B #25, 16 47 14-6 W

C.S. #100 cont. for Whitess

E of Hawley Cl. Cor. #1# Set sta. B.S. on 3.

Sta. 1 2.930 90°17' S 89°30' W

2 .32 + .25 = total of 3.50

3

4 3.50 89°01' S 88°48' W B.S. on 1

5

Dist. 1 to 4 50°13' E as surveyed by

#73 A

Nov 20, 1920

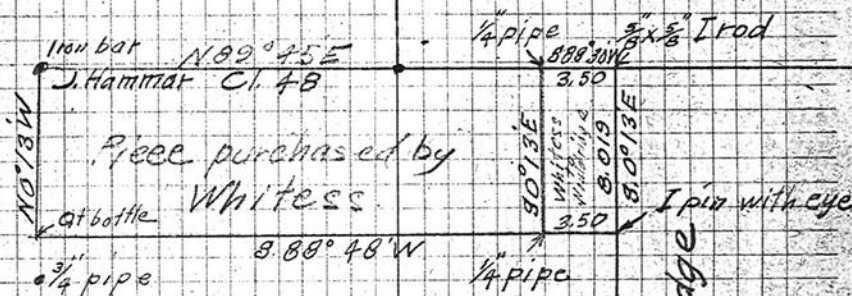
Whitess ax

NE cor tract  $\frac{3}{4}$  x  $\frac{3}{4}$  I rod.set  $\frac{1}{4}$  pipe

SE cor of tract I pin

SW cor of tract  $\frac{1}{4}$  pipe

W.C. Galloway 8.019 chs.



Dwight + Mabel Whitess

B.B. Wouldridge