

DRAWING NUMBER

7360

PLAN HOLD CORPORATION • IRVINE, CALIFORNIA
REORDER BY NUMBER 075AR
POSITION EDGE OF PRINT ON THIS LINE

DRAWING NUMBER

7360

PLAN HOLD CORPORATION • IRVINE, CALIFORNIA
REORDER BY NUMBER 075AR
POSITION EDGE OF PRINT ON THIS LINE

DRAWING NUMBER

PLAN HOLD CORPORATION • IRVINE, CALIFORNIA
REORDER BY NUMBER 075AR
POSITION EDGE OF PRINT ON THIS LINE

MINOR LAND PARTITION &
SURVEY
FOR
PETER FINDEN
LOCATED IN THE
A.M. RAINWATER D.L.C. NO. 39
E. 1/2 SECTION 1, T. 11 S., R. 4 W., W.M.
BENTON COUNTY, OREGON
SCALE: 1" = 100' NOVEMBER 27, 1981

Benton County
Surveyor's Office

C. S. FILE NO. 7360
FILING DATE 12-8-81
FILE SIZE 18 x 24
P.M.

NARRATIVE:

THE PURPOSE OF THIS SURVEY IS TO PARTITION 0.94 ACRES
OFF THE N.E. CORNER OF THE PARENT PARCEL AS INDICATED.
RIGHT OF WAY MONUMENTS WERE FOUND AND HELD TO DEFINE
THE ALIGNMENT OF C.R. 14401. THIS ALIGNMENT DETERMINED
FROM PLAN OF COUNTY ROUTE 40-A.

- o INDICATES 5/8" x 30" LONG IRON ROD SET WITH PLASTIC CAP NO. 1073 UNLESS OTHERWISE NOTED.
- { } PER C.S. 277 (GALLOWAY)
- [] COUNTY ROAD RECORD

MINOR LAND PARTITION APPROVED

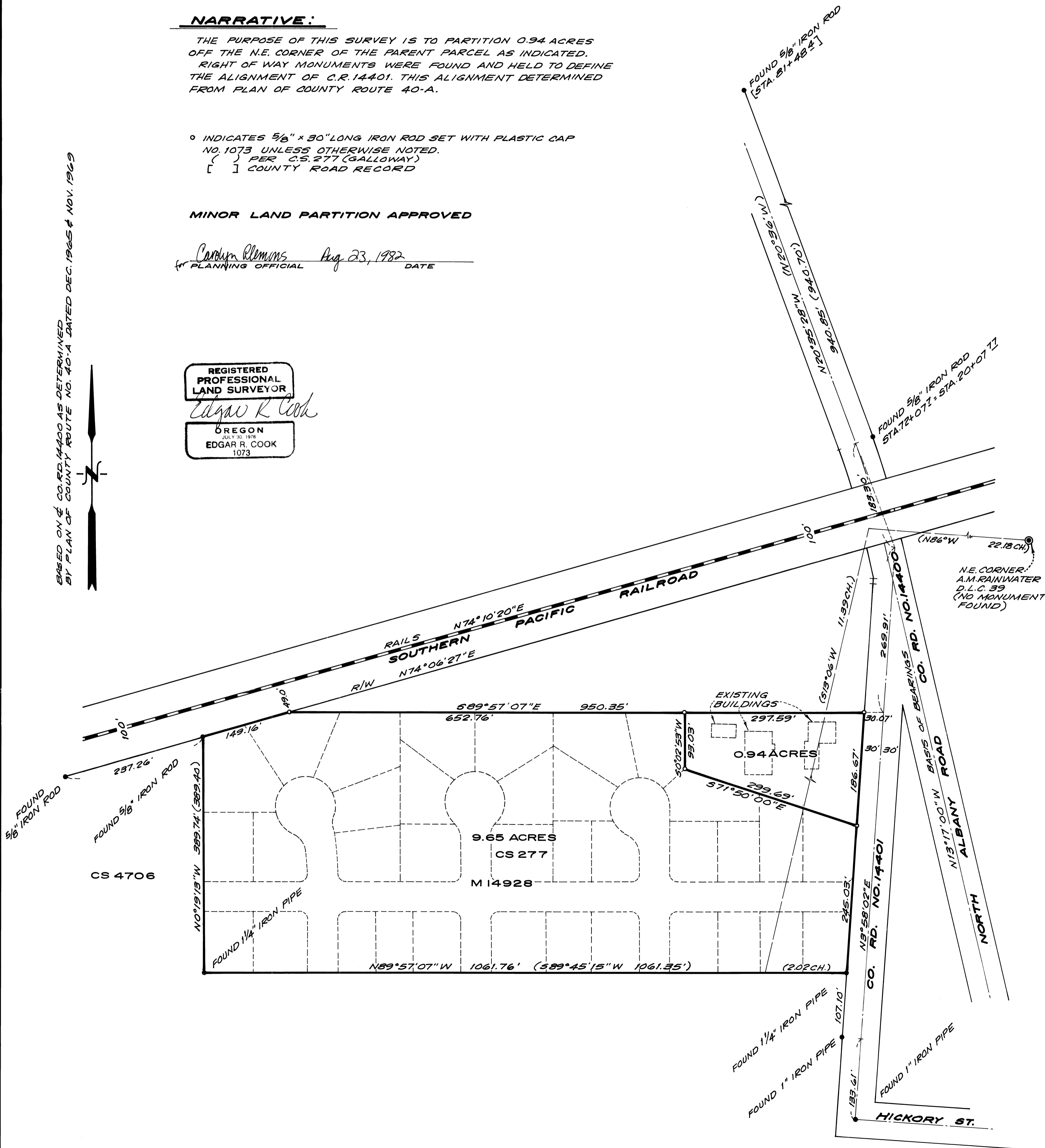
Carolyn Clemens Aug 23, 1982
PLANNING OFFICIAL DATE

REGISTERED
PROFESSIONAL
LAND SURVEYOR

Edgar R Cook

OREGON
JULY 30, 1978
EDGAR R. COOK
1073

BASED ON & CO. RD. 14400 AS DETERMINED
BY PLAN OF COUNTY ROUTE NO. 40-A DATED DEC. 1965 & NOV. 1969



Timberland  McCullough
ENGINEERS SURVEYORS FORESTERS PLANNERS

1010 Airport Road, S.E. • P.O. Box 668 • Albany, OR 97321
(503) 926-9404 Offices in Albany • Bend • McMinnville • Sunriver

1010 AIRPORT ROAD S.E.
P.O. BOX 668
ALBANY, OR. 97321
(503) 926-9404