

7365

DRAWING NUMBER

7365

PLAN HOLD CORPORATION • IRVINE, CALIFORNIA

REORDER BY NUMBER 075AR

DRAWING NUMBER

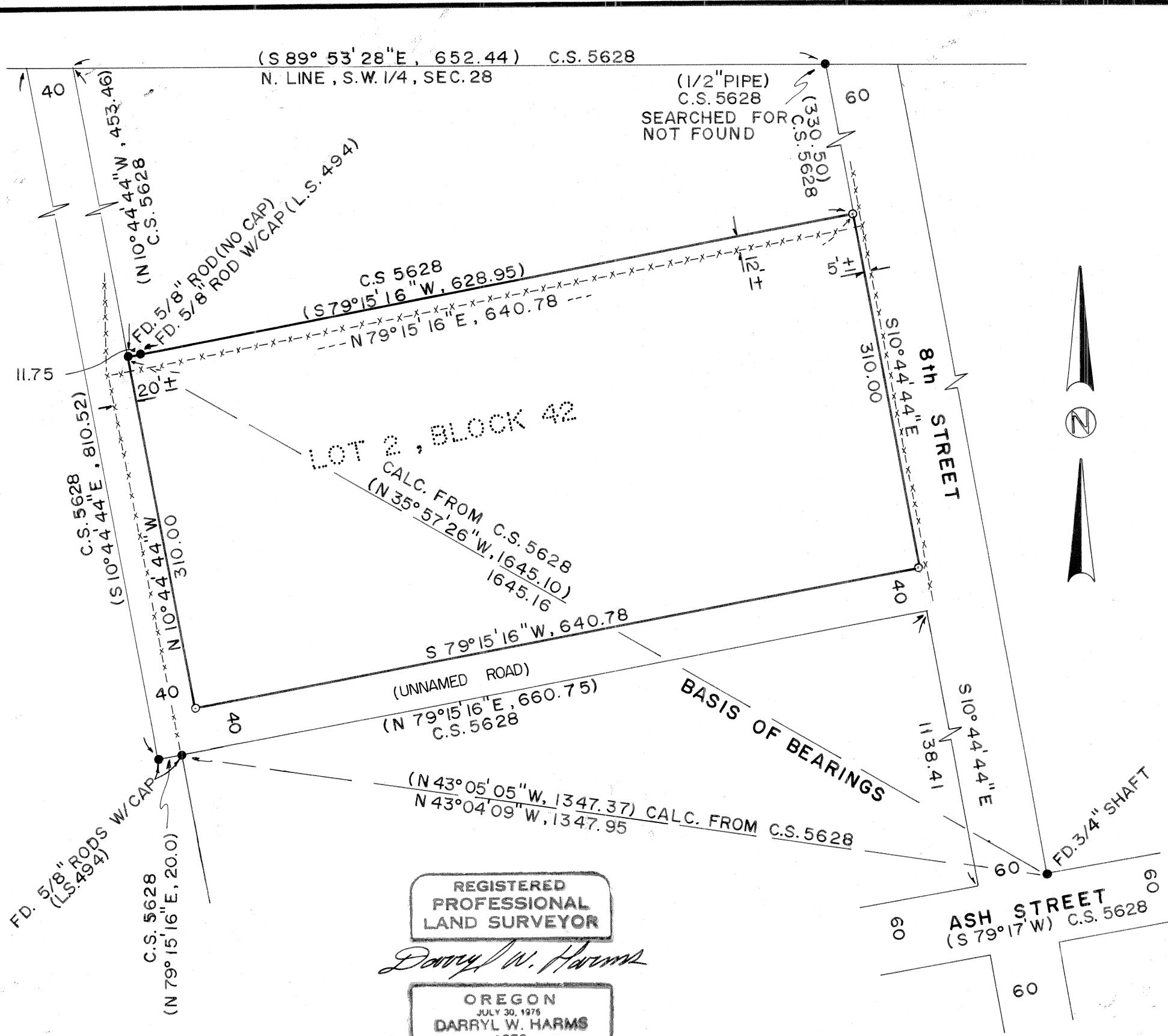
7365

PLAN HOLD CORPORATION • IRVINE, CALIFORNIA

REORDER BY NUMBER 075AR

7365

PI



MAP OF SURVEY  
for  
JOAN ZIMMER

SCALE; 1" = 100' DEC. 12, 1981

LOCATION

LOT 2, BLOCK 42, SECOND AMENDED PLAT  
TO THE PACIFIC ADDITION TO MONROE  
S.W. 1/4 SEC. 28, T.14S., R. 5 W., W.M.  
BENTON COUNTY, OREGON

LEGEND

- MONUMENT FOUND (AS NOTED)
- 5/8" X 30" IRON ROD WITH YELLOW PLASTIC CAP (L.S. NO. 1079 ON CAP) SET
- ( ) RECORD INFORMATION (AS NOTED)
- x-x- FENCE LINE

NARRATIVE

THE 5/8" IRON ROD FOUND AT THE NORTHWEST CORNER OF LOT 2, BLOCK 42 WAS HELD FOR POSITION

BEARINGS ARE BASED ON THE CALCULATED INVERSE OF THE LINE INDICATED USING DATA FROM C.S. 5628.

THE REMAINING CORNERS OF LOT 2, BLOCK 42 WERE SET BY HOLDING C.S. 5628 BEARINGS AND A 60.00 FT. RIGHT OF WAY WIDTH FOR 8th STREET.

REGISTERED  
PROFESSIONAL  
LAND SURVEYOR

*Darryl W. Harms*

OREGON  
JULY 30, 1975  
DARRYL W. HARMS  
1079

Benton County  
Surveyor's Office  
C.S. FILE NO. 7365  
PLANNING DATE 12-31-81  
FILE SIZE 11x17 P.M.