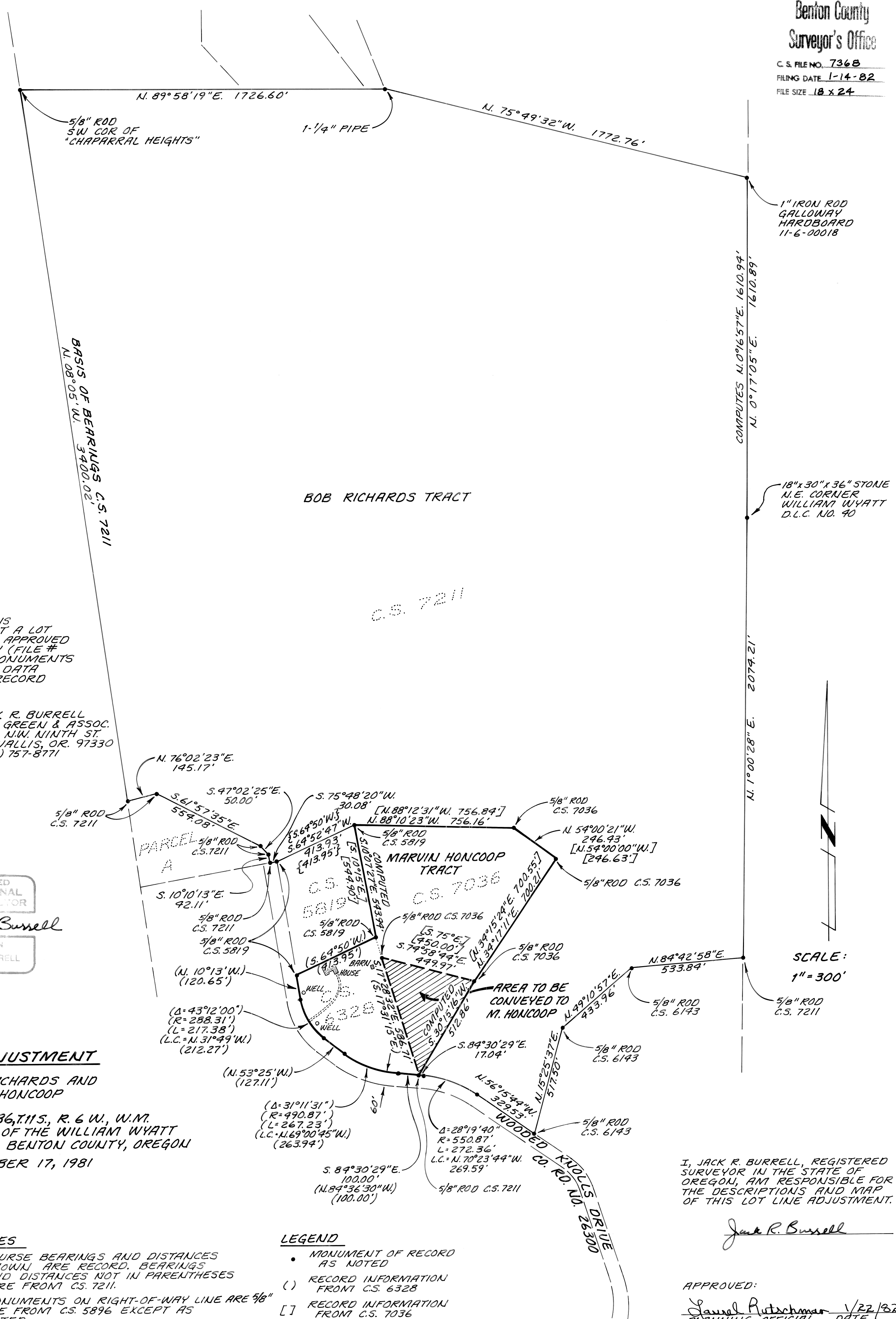


Benton County
Surveyor's Office

C. S. FILE NO. **7368**
FILING DATE **1-14-82**
FILE SIZE **18 x 24**



NARRATIVE
THE PURPOSE OF THIS DRAWING IS TO DEPICT A LOT LINE ADJUSTMENT APPROVED BY BENTON COUNTY (FILE # LD 81-61/M). NO MONUMENTS WERE SET AND ALL DATA SHOWN REFLECTS RECORD INFORMATION.

JACK R. BURRELL
PAUL GREEN & ASSOC.
1879 N.W. NINTH ST.
CORVALLIS, OR. 97330
(503) 757-8771

REGISTERED
PROFESSIONAL
LAND SURVEYOR
Jack R. Burrell
OREGON
JACK R. BURRELL
1630

LOT LINE ADJUSTMENT

FOR ROBERT RICHARDS AND MARVIN HONCOOP

IN SE 1/4 SEC. 36, T.11S., R. 6 W., W.M. IN A PORTION OF THE WILLIAM WYATT D.L.C. NO. 90 IN BENTON COUNTY, OREGON
DATE: DECEMBER 17, 1981

NOTES

- COURSE BEARINGS AND DISTANCES SHOWN ARE RECORD. BEARINGS AND DISTANCES NOT IN PARENTHESES ARE FROM C.S. 7211.
- MONUMENTS ON RIGHT-OF-WAY LINE ARE 5/8" ARE FROM C.S. 5896 EXCEPT AS NOTED.

LEGEND

- MONUMENT OF RECORD AS NOTED
- () RECORD INFORMATION FROM C.S. 6328
- [] RECORD INFORMATION FROM C.S. 7036
- { } RECORD INFORMATION FROM C.S. 5819
- APPROXIMATE LOCATION OF STRUCTURE

SCALE:
1" = 300'

I, JACK R. BURRELL, REGISTERED SURVEYOR IN THE STATE OF OREGON, AM RESPONSIBLE FOR THE DESCRIPTIONS AND MAP OF THIS LOT LINE ADJUSTMENT.

Jack R. Burrell

APPROVED:

Janet Rutschman 1/22/82
PLANNING OFFICIAL DATE

LD-81-61