

DRAWING NUMBER
7386

PLAN HOLD CORPORATION • IRVINE, CALIFORNIA
REORDER BY NUMBER 075AR
POSITION EDGE OF PRINT ON THIS LINE

DRAWING NUMBER

PLAN HOLD CORPORATION • IRVINE, CALIFORNIA
REORDER BY NUMBER 075AR
POSITION EDGE OF PRINT ON THIS LINE

DRAWING NUMBER

PLAN HOLD CORPORATION • IRVINE, CALIFORNIA
REORDER BY NUMBER 075AR
POSITION EDGE OF PRINT ON THIS LINE

DRAWING NUMBER
7386

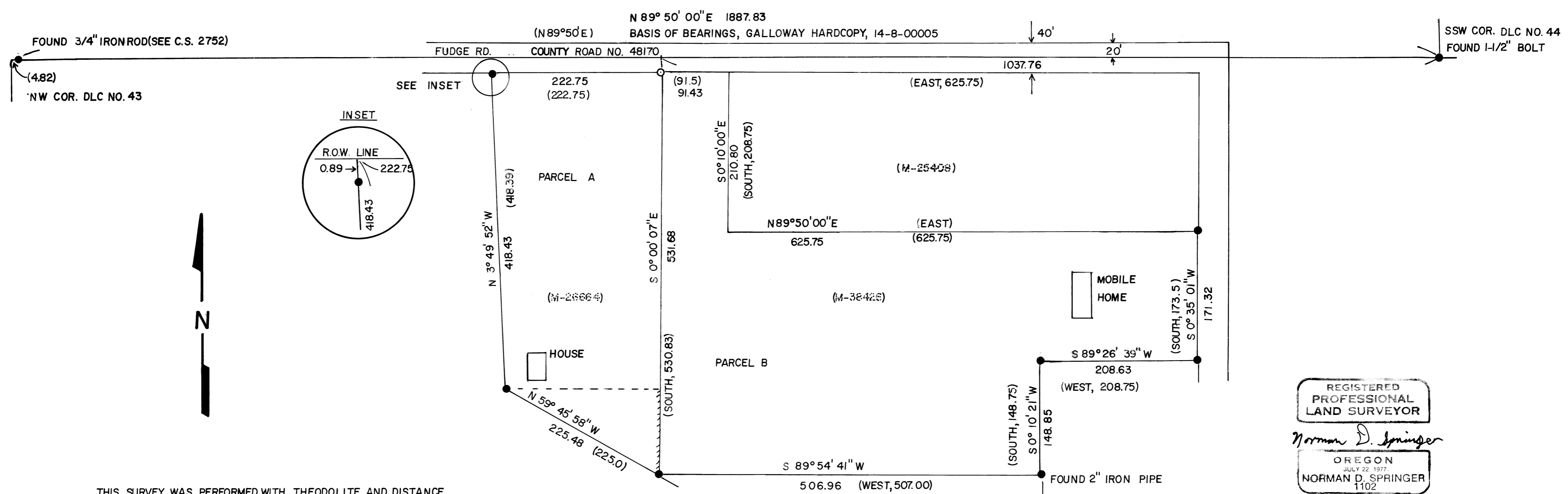
PLAN HOLD CORPORATION • IRVINE, CALIFORNIA
REORDER BY NUMBER 075AR
POSITION EDGE OF PRINT ON THIS LINE

RECORD OF SURVEY / MINOR LAND PARTITION

for JERRY EATON
in the SE 1/4, SECTION 12, DAVID FUDGE D.L.C. NO. 43, T.14S, R.8W., W.M.
BENTON COUNTY, OREGON
MARCH 16, 1982
SCALE: 1" = 100'

Benton County
Surveyor's Office
FILE NO. 7386
PLANNING DATE 3-17-82
SIZE 18" x 24" + descrip.
P.M.

- LEGEND**
- FOUND 1" IRON PIPE, EXCEPT AS NOTED
 - SET 5/8" X 30" IRON ROD WITH PLASTIC CAP MARKED LS 1102
 - () RECORD DATA FROM DEEDS, EXCEPT AS NOTED
 - EXISTING LINE, TO BE CHANGED
 - ==== NEW LOT LINE



THIS SURVEY WAS PERFORMED WITH THEODOLITE AND DISTANCE METER, USING RADIAL METHODS. THE DEEDS CALL THE IRON PIPES EVEN THOUGH THEY AREN'T ON A RECORDED SURVEY. THIS SURVEY WAS MADE TO ADJUST THE LINE BETWEEN PARCELS A AND B.

REGISTERED
PROFESSIONAL
LAND SURVEYOR
Norman D. Springer
OREGON
JULY 22, 1977
NORMAN D. SPRINGER
1102

MINOR LAND PARTITION FINAL APPROVAL
LD-82-3
Paul Rutschman 5/26/82
PLANNING OFFICIAL DATE

SPRINGER SURVEYING
RT. 1 BOX 288-B
CORVALLIS, OR. 97330
745-5798