

C.S. # 740

F.B. 25-64

64
FB #25

2710

513, T12S R45W
CS-309 for Max Winkler on
MB Hughes
Set on pt on S bank
of river sight on E of
E bear tree

A	0.20	Sum Dist	90°L
A1	MC to A	3.919	
	3.710	3.710	4°32'
A2		7.629	
	10.360	10.360	
A3		17.989	
	5.187	5.187	
A4		23.176	
	4.948	4.948	
A5		28.124	
	5.136	5.136	
A6	7.341	33.260	
	5.290	5.290	
A7		38.550	
	5.381	43.29	
A8	5.000	81.840	
A9	5.000		
A10	5.000		
A11	5.837		
A12	5.000		
A13	4.237		
A14	2.250	35.458	
	1.840		
	37.298		

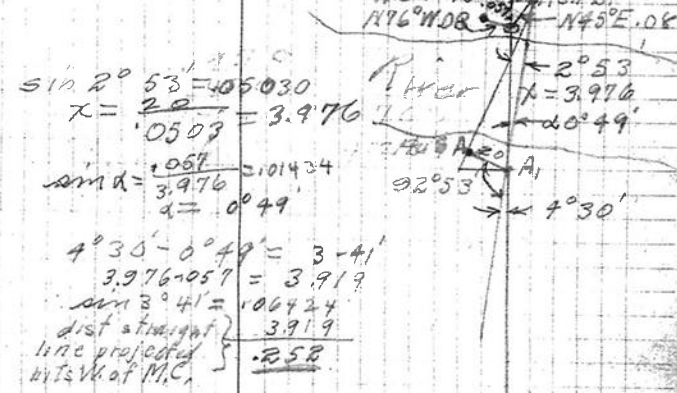
MC to set
Dist to set
57.629
587°W.246
Maple Point 2.40

Set pipe with
587°W.246
Maple Point 2.40

Township line W of sec 7 RAW
a little S of cor.

Mr Hughes claim
young tree
MAX Winkler tree

at A1 35 on A det. angle 92°53'



4th cor near line

2.250
4.237
5.000
5.837
5.000
5.000
5.000
5.000
5.384
5.290
5.136
4.948
5.187
10.360
3.710
3.919
76.258

~~70.258~~
~~43.290~~
~~35.458~~
~~154.791~~
~~207.1396~~
~~318.698~~

~~76.258~~
~~35.458~~
~~111.501~~

A15 (25) N of old Riv Bank.

3.834

A16 in old Riv bottom.

4.970

A17 (50) S of old Riv bank

A17a 5.000 added.

2.112

A18 -2030

4.227

A19 N of Slough bank 10

15.772

A20

4.366

A21 -0.35

4.328

hit 558 E of old ca.

4.328	4.328
15.772	15.772
4.227	4.227
2.112	2.112
4.970	4.970
3.834	3.834
<u>35.243</u>	<u>42.493</u>
	4.227
	5.000
	5.837
	5.000
	5.000
	5.000
	5.384
	<u>77.951</u>

79.846
77.951

77.951
71.496
6.455
5.384
1.071

79.846
8.35
71.496

37.298
2.250
39.548
3.834
43.382
4.970

364
2.20
1.50

3.919	0.0000	252
	0.272	252
	<u>0.258</u>	225
3.710	0.530	1.99
	0.720	
10.360	1.250	1.27
	0.361	
5.187	1.611	0.91
	0.344	
4.918	1.455	0.56
5.136	0.358	
	2.313	0.21
5.290	0.368	
	2.681	0.16
5.384	0.375	
	3.056	0.54
5.000	0.348	
	3.404	0.88
5.000	0.340	
	3.752	1.23
5.000	0.340	
	4.100	1.58
5.837	0.406	
	4.506	1.99
5.000	0.348	
	4.854	2.33
4.237	0.245	
	5.140	2.63
2.250	0.157	
3.834	0.306	2.79
	0.266	
4.970	0.372	3.05
	0.348	3.40
5.000	0.340	3.75
	0.147	
2.112	0.147	
	6.413	3.89
4.227	0.295	
	6.708	4.19
15.772	1.100	
	7.808	5.29
	0.300	
	8.108	5.58

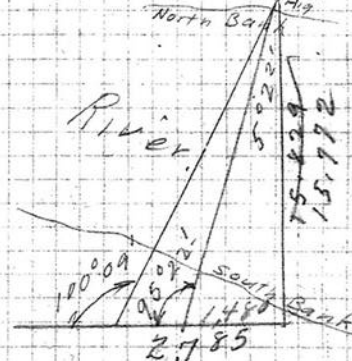
offsets

Triangulate across Riv from A15

A15 B to A19

Rt angle 2.785

at angle 100.096



1480
X = 1480
K = 1480
0.9390
772
15.772

0.939 (1480)
9.29
5.430
4.695
7.250
6.573
67.00
65.19
79.846
79.846

4.328
116.401
4.328
119.691
0.00696
801

Correct 500 ft