

SURVEY FOR CITY OF CORVALLIS
 IN SE 1/4 OF SW 1/4 OF SEC 22,
 NE 1/4 OF NW 1/4 OF SEC 27,
 T 11 S, R 5 W.W.M. BENTON CO
 JOHN D. MULKEY D.L.C. # 54



SCALE 1" = 40'

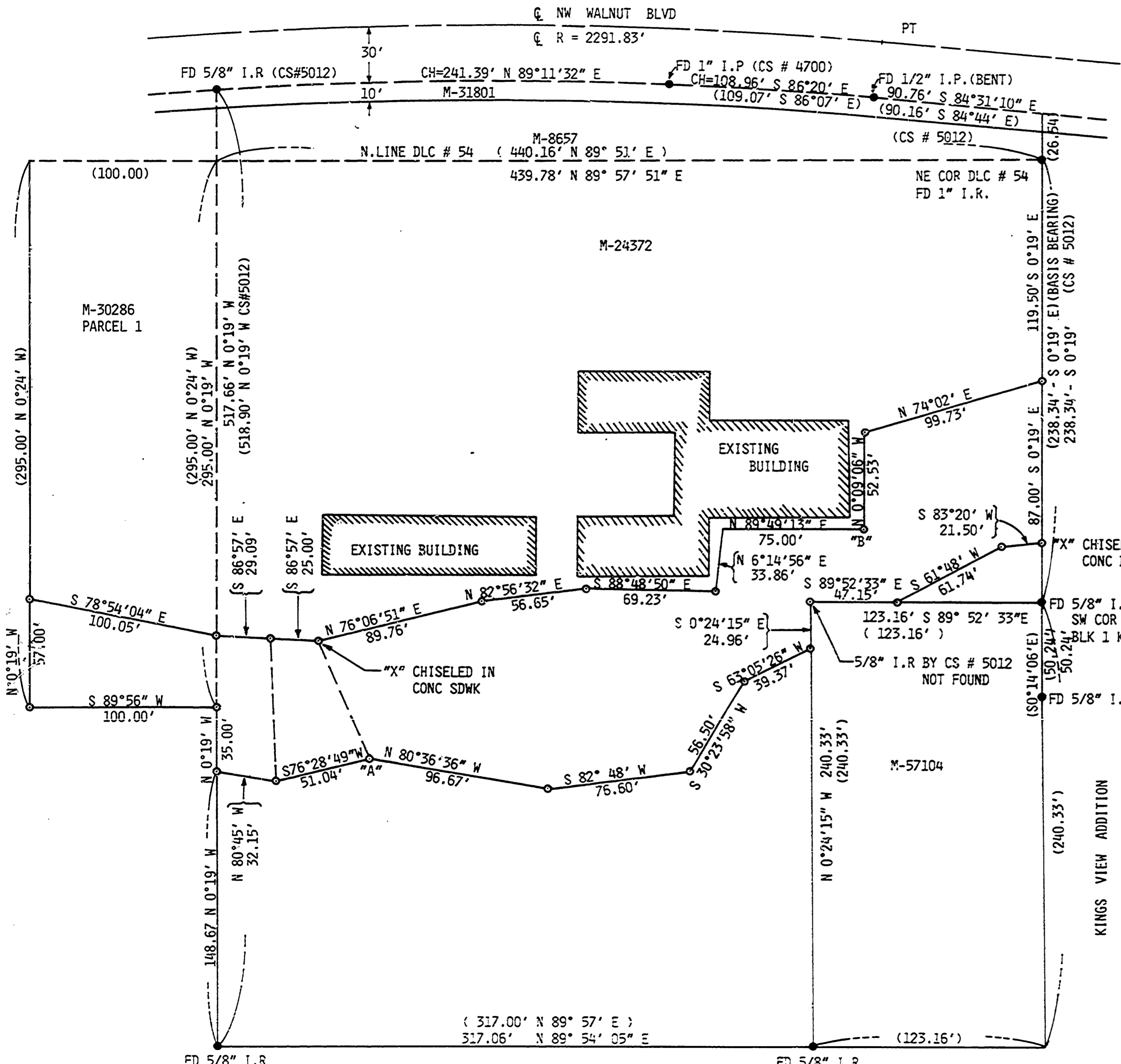
CITY OF CORVALLIS
 501 S.W. MADISON
 CORVALLIS, OREGON

LEGEND:

- FD. FOUND
- I.P. IRON PIPE
- I.R. IRON ROD
- () RECORD DATA FROM DEED, UNLESS NOTED OTHERWISE
- SET 5/8" x 30" IRON ROD W/PLASTIC CAP MARKED "CITY OF CORVALLIS", UNLESS NOTED OTHERWISE
- FOUND MONUMENT AS NOTED
- CH CHORD
- PT POINT OF TANGENT

REFERENCES:

- CS # 5012
 - M - 30286
 - M - 8657
 - M - 57104
 - M - 19010
 - B 197 - P 615 AND B 89 - P 489
 - KINGS VIEW ADDITION PLAT
 - HILL VIEW ADDITION PLAT
 - M - 31081
 - M - 24372
 - CS # 4700
- APRIL 28, 1982



NARRATIVE

THE PURPOSE OF THIS SURVEY WAS TO LOCATE AND MONUMENT A PARCEL OF PROPERTY THAT THE NORTHWEST HILLS BAPTIST CHURCH HAS DEDICATED FOR AN OPEN DRAINAGEWAY. THE CHURCH OWNS THAT PROPERTY DESCRIBED IN M - 24372 AND PARCELS 1 & 2 IN M - 30286 OF THE BENTON COUNTY DEED RECORDS. BASICALLY CS # 5012 AND M - 30286 CONTROLLED THE SOUTH, EAST, AND WEST SIDES. NW WALNUT BLVD. CONTROLLED THE NORTH LINE, THE 5/8" I.R. AT THE NW CORNER OF THAT PROPERTY DESCRIBED IN M - 57104 WAS NOT FOUND, SO RECORD DISTANCES FOR THE NORTH AND WEST BOUNDARIES WERE USED FOR THE RE-ESTABLISHMENT OF THAT CORNER.

THE BASIS OF BEARING WAS THE MOST EASTERLY LINE ON CS # 5012, BETWEEN THE CLAIM CORNER AND THE 5/8" I.R. AT THE SW CORNER OF LOT 1, BLK 1 KINGS VIEW ADDITION, AS SHOWN.

Benton County
 Surveyor's Office

C.S. FILE NO. 74-03
 MEAS. DATE 6-2-82
 PLAT SIZE 18" x 24"