

DRAWING NUMBER
7417

PLAN HOLD CORPORATION • IRVINE, CALIFORNIA
REORDER BY NUMBER 075AR
POSITION EDGE OF PRINT ON THIS LINE

DRAWING NUMBER
7417

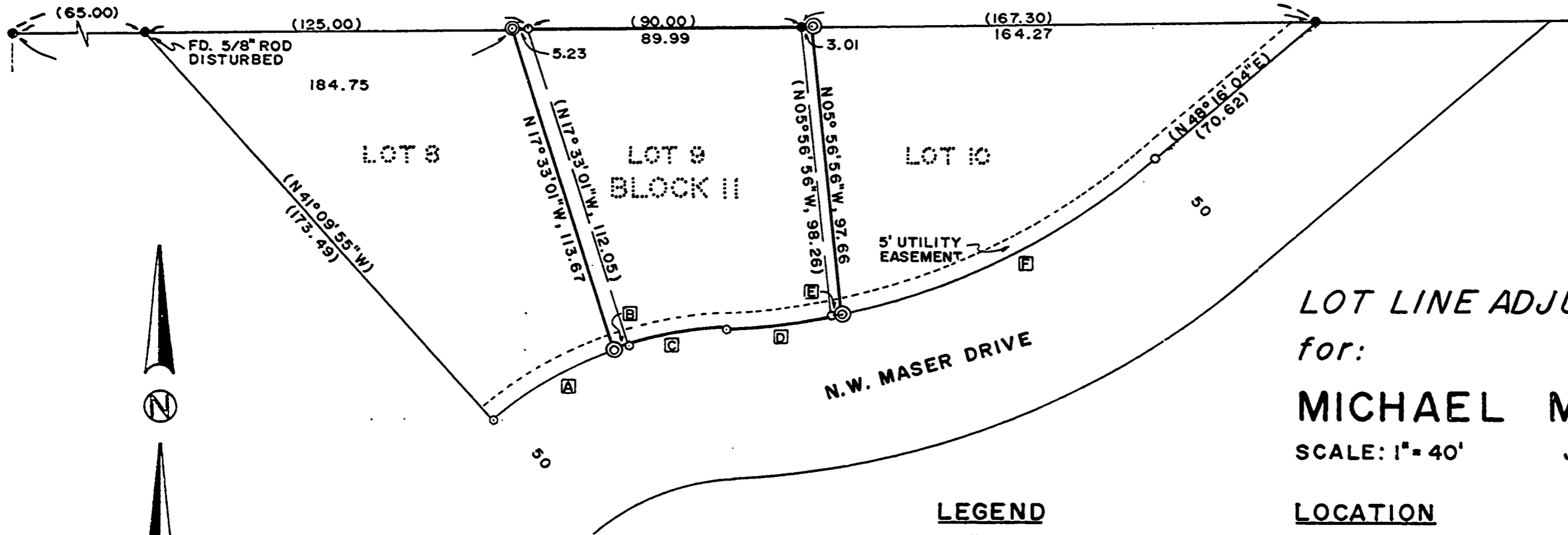
PLAN HOLD CORPORATION • IRVINE, CALIFORNIA
REORDER BY NUMBER 075AR
POSITION EDGE OF PRINT ON THIS LINE

Benton County
Surveyor's Office

C.S. FILE NO. 7417
FILING DATE 7-6-82
FILE SIZE 14" x 17" + descr.
P.H.

BASIS OF BEARINGS

-- (S 89° 24' 02" W, 447.30) 447.25 --
PER PLAT OF WALNUT PARK



LOT LINE ADJUSTMENT
for:

MICHAEL MAKSUD

SCALE: 1" = 40' JUNE 30, 1982

LEGEND

- 5/8" IRON ROD FOUND
- 5/8" ROD SEARCHED FOR
- ⊙ 5/8" X 30" IRON ROD WITH CAP (L.S. 1079 ON CAP) SET
- () INFORMATION FROM PLAT OF WALNUT PARK

LOCATION

LOTS 8, 9 & 10, BLOCK II, WALNUT PARK
S.W. 1/4, SECTION 21, T.11 S., R.5 W., W.M.
BENTON COUNTY, OREGON.

NARRATIVE

MONUMENTS FOUND; THE NORTHWEST CORNER OF BLOCK II, THE NORTHEAST CORNER OF LOT 9 AND THE MOST EASTERLY CORNER OF LOT 10, WERE USED FOR CONTROL MONUMENTS ON THE NORTH LINE OF MASER DR., APPEAR TO HAVE BEEN REMOVED BY STREET CONSTRUCTION, THUS WALNUT PARK PLAT BEARINGS AND DISTANCES WERE ALSO USED FOR CONTROL.

LEGAL DESCRIPTIONS

SEPERATE SHEET

CURVE DATA

	RADIUS	ARC	CHORD
A	125.00	46.52	N 59° 29' 34" E, 46.26
B	125.00	5.00	N 71° 18' 13" E, 5.00
C	125.00	32.33	N 79° 51' 35" E, 32.24
D	225.00	34.96	N 82° 49' 04" E, 34.93
E	225.00	3.02	N 77° 58' 56" E, 3.02
F	225.00	115.18	N 62° 55' 59" E, 113.93

LOT LINE ADJUSTMENT APPROVED

J. P. Pace
PLANNING OFFICIAL *July 14, 1982*
DATE
File # LLA 82-3

REGISTERED
PROFESSIONAL
LAND SURVEYOR

Darryl W. Harms

OREGON
JULY 30, 1976
DARRYL W. HARMS
1079

DARRYL W. HARMS, P.L.S.
P.O. BOX 1051
CORVALLIS, OR. 97339
PHONE: 745-5694

REEL 17 FRAME 151