

C.S. # 743

Hardcopy 10-4 #16

also see notes in file

F. B. 25-67

67  
FB# 25  
#743

C.S. 163 + 283 Con. For  
in sec. 25 T10S R4W

A<sub>0</sub> 3/4" pipe at T in Co road &  
5142 5.185 589°36'E

A<sub>1</sub> 2°45' 3/4" pipe & Co Road at end  
8220 8.210 589°36'E

A<sub>2</sub> 90°0'R  
0.10 50°24'W

A<sub>3</sub> 90°0'  
12560 589°36'E

A<sub>4</sub> 30°30' 15.10 80' of cor  
2.859 2.854 92°29'R  
offset .010 E 52°53'W  
4.470 { 2.00 at 10°30'  
1.670 12°0'  
.500 20°20' } 4.305

A<sub>5</sub> 516  
531 510 Set 3/4" P .0445 E  
1.53 1.820 87°58'R  
N89°26'W

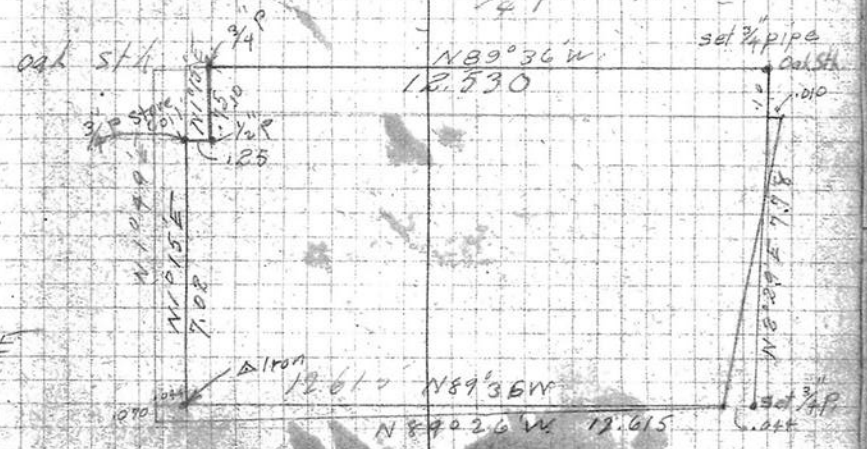
A<sub>6</sub> 10.795  
91°15'R  
1.070 N1°49'E  
9.777 88°35'R  
0.0110 589°36'E

T. B. Radford axe Jan 19,  
Crocker chains 1921.

Set pipe .025 E which makes it check  
for measurement

Set 3/4" P .030 E

Set another 1/2" P .755 at my  
3/4" P .025 W



Set E .044 1/4" P  
N 1.070