

RECORD OF SURVEY  
for STARKER FORESTS, INC. & THOMPSON TIMBER CO.  
in SECTION 4, T12S, R7W, W.M.  
BENTON COUNTY, OREGON  
AUGUST 6, 1982

Benton County  
Surveyor's Office

C.S. NO. 7435  
DATE 8-27-82  
SHEET 18" x 24" P. 4.

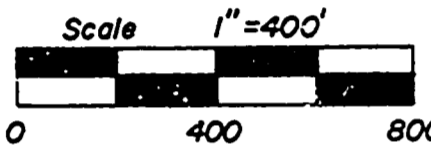
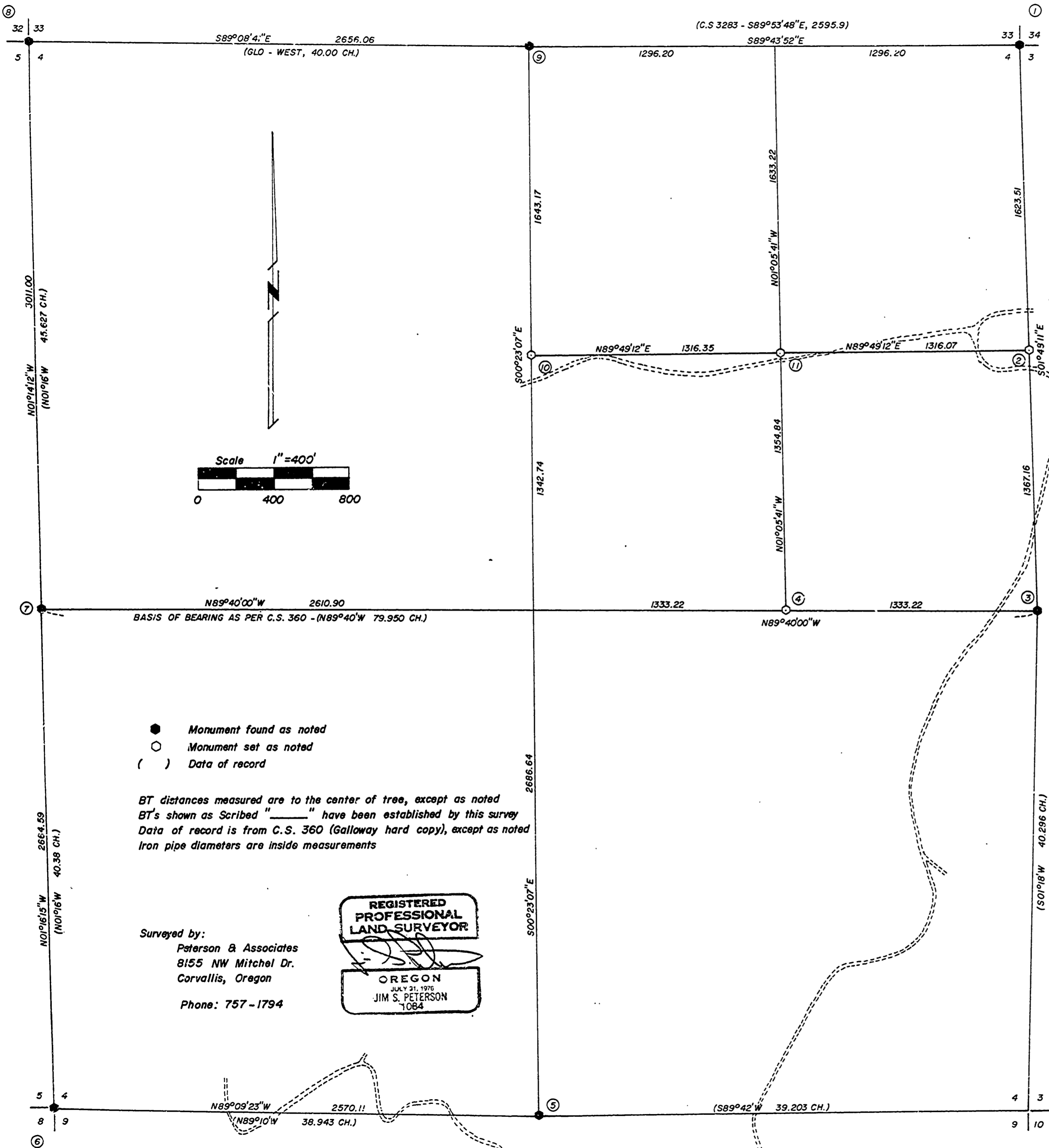
CORNER NOTES

- ① Found Oregon State Board of Forestry brass cap
- ② Set 5/8" X 30" iron rod (rod has plastic cap marked "LS 1084")  
14" Fir, N02°W, 9.0 Ft. Scribed "NI/16 S4 BT"  
18" Fir, N69°E, 20.7 Ft. Scribed "NI/16 S3 BT"
- ③ Found 1 1/2" X 3 1/2" channel iron  
60" Fir Stump, S60°E, 26.3 Ft. (to face) - (S60°E, 39 Lks.) Healed face  
50" Fir Stump, S58 1/2°W, 109.5 Ft. (to face) - (S58 1/2°W, 166 Lks.) Scribing visible  
36" Fir Stump, (S41°50'W, 1.649 Ch.) No marks visible  
12" Fir, S80°E, 6.3 Ft. Scribed "1/4 S3 BT"  
12" Fir, S56°W, 28.1 Ft. Scribed "1/4 S4 BT"
- ④ Set 5/8" X 30" iron rod (rod has plastic cap marked "LS 1084")  
44" Fir, N59°E, 27.7 Ft. Scribed "CEI/16 S4 BT"  
18" Hemlock, South, 18.2 Ft. Scribed "CEI/16 S4 BT"
- ⑤ Found 1" iron pipe  
36" Fir, N52 1/2°E, 16.5 Ft. - (N52 1/2°E, .252 Ch.) Healed face  
26" Fir Stump, S78°W, 16.3 Ft. - (S78°W, .247 Ch.) No marks visible  
10" Hemlock, S47°E, 33.2 Ft. Scribed "1/4 S9 BT"
- ⑥ Found 5/8" iron rod  
40" Fir Stump, N51 1/2°E, 45.2 Ft. (to face) - (N51 1/2°E, 69 Lks.) No marks visible  
28" Fir Stump, S72°E, 8.4 Ft. - (S72°E, .123 Ch.) Scribing visible  
38" Fir Stump, S80 1/2°W, 36.4 Ft. (to face) - (S80 1/2°W, 55 Lks.) No marks visible  
42" Fir Stump, N2°W, 59.1 Ft. (to face) - (N2°W, 89 Lks.) Healed face  
10" Fir, N40°E, 16.5 Ft. Scribed "T12S R7W S4 BT"  
8" Fir, S15°E, 14.8 Ft. Scribed "T12S R7W S9 BT"  
10" Fir, S40°W, 22.1 Ft. Scribed "T12S R7W S8 BT"  
16" Fir, N85°W, 26.3 Ft. Scribed "T12S R7W S5 BT"
- ⑦ Found 1/2" iron pipe  
12" Fir, (N27°W, .373 Ch.) Healed face
- ⑧ Found 1/2" iron pipe  
28" Fir, S02 1/4°W, 46.7 Ft. - (S02 1/4°W, .707 Ch.) Healed face  
22" Alder Stump, N72°E, 30.7 Ft. - (N72°E, .466 Ch.) Scar visible  
24" Alder, S82°E, 14.2 Ft. Scribing visible  
10" Alder, N06°E, 24.8 Ft. Scribed "T11S R7W S33 BT"  
12" Alder, N38°W, 19.3 Ft. Scribed "T11S R7W S32 BT"
- ⑨ Found Oregon State Board of Forestry brass cap  
Rotted Fir Stub, S75°W, 16.0 Ft. (to face) - (S75°W, 24 Lks.) Chopped face  
48" Fir, S26°W, 29.2 Ft. - (S22°W, 31.1 Ft.) Healed face  
40" Fir Stump, (N58°W, 50.9 Ft.) Healed face
- ⑩ Set 5/8" X 30" iron rod (rod has plastic cap marked "LS 1084")  
14" Fir, S69°E, 3.3 Ft. Scribed "CNI/16 S4 BT"  
14" Fir, S60°W, 15.8 Ft. Scribed "CNI/16 S4 BT"
- ⑪ Set 5/8" X 30" iron rod (rod has plastic cap marked "LS 1084")  
26" Fir, S18°W, 19.6 Ft. Scribed "NEI/16 S4 BT"  
24" Fir, S78°E, 51.4 Ft. Scribed "NEI/16 S4 BT"

NARRATIVE

The purpose of this survey is to subdivide the NE1/4 of Section 4, and to establish the CNI/16, CEI/16, NEI/16 and NI/16 corners of said quarter Section.

In 1936 W.C. Galloway recovered all but the NI/4 and W1/4 corners of Section 4. At that time he reestablished the W1/4 corner by proportionate measurement, (See C.S. 360-Galloway hard copy). In 1959 the Oregon State Board of Forestry recovered the NI/4 corner of Section 4.



- Monument found as noted
- Monument set as noted
- ( ) Data of record

BT distances measured are to the center of tree, except as noted  
BT's shown as Scribed " " have been established by this survey  
Data of record is from C.S. 360 (Galloway hard copy), except as noted  
Iron pipe diameters are inside measurements

Surveyed by:  
Peterson & Associates  
8155 NW Mitchel Dr.  
Corvallis, Oregon  
Phone: 757-1794

REGISTERED  
PROFESSIONAL  
LAND SURVEYOR

OREGON  
JULY 21, 1976  
JIM S. PETERSON  
1084

REEL 17 FRAME 137