

DRAWING NUMBER

7441

PLAN HOLD CORPORATION • IRVINE, CALIFORNIA

RECORDED BY NUMBER 075AR

DRAWING NUMBER

7441

PLAN HOLD CORPORATION • IRVINE, CALIFORNIA

RECORDED BY NUMBER 075AR

J-102

RECORD OF SURVEY

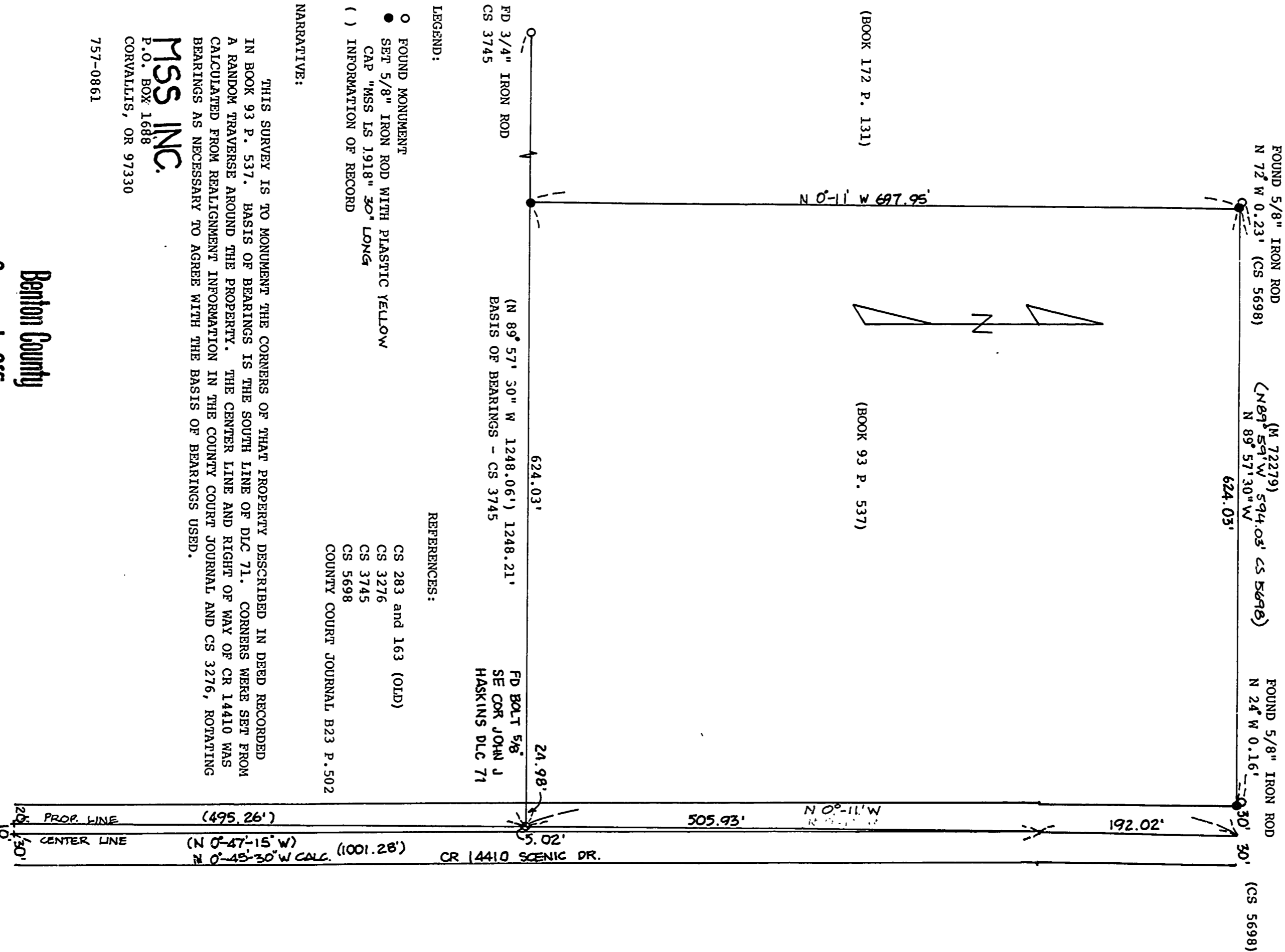
FOR

CLAUDE BUERGE

JOHN J. HASKINS DLC NO. 71
NW 1/4, SEC 26, T 10, R 4 W, WM

BENTON COUNTY, OR.

16 AUGUST 1982
SCALE: 1" = 100'



LEGEND:

- FOUND MONUMENT
- SET 5/8" IRON ROD WITH PLASTIC YELLOW CAP "MSS IS 1918" 30" LONG
- () INFORMATION OF RECORD

REFERENCES:

- CS 283 and 163 (OLD)
- CS 3276
- CS 3745
- CS 5698
- COUNTY COURT JOURNAL B23 P. 502

NARRATIVE:

THIS SURVEY IS TO MONUMENT THE CORNERS OF THAT PROPERTY DESCRIBED IN DEED RECORDED IN BOOK 93 P. 537. BASIS OF BEARINGS IS THE SOUTH LINE OF DIC 71. CORNERS WERE SET FROM A RANDOM TRAVERSE AROUND THE PROPERTY. THE CENTER LINE AND RIGHT OF WAY OF CR 14410 WAS CALCULATED FROM REALIGNMENT INFORMATION IN THE COUNTY COURT JOURNAL AND CS 3276, ROTATING BEARINGS AS NECESSARY TO AGREE WITH THE BASIS OF BEARINGS USED.

MSS INC.

P.O. BOX 1688
CORVALLIS, OR 97330
757-0861

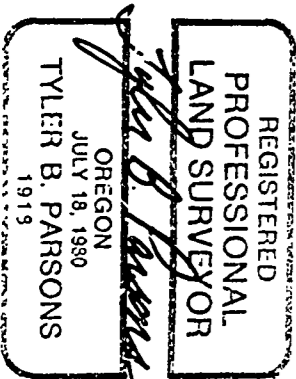
Benton County

Surveyor's Office

C. S. FILE NO. 7441

FILING DATE 8-25-82

FILE SIZE 14" x 17"
PM



REEL 17 FRAME 1 33