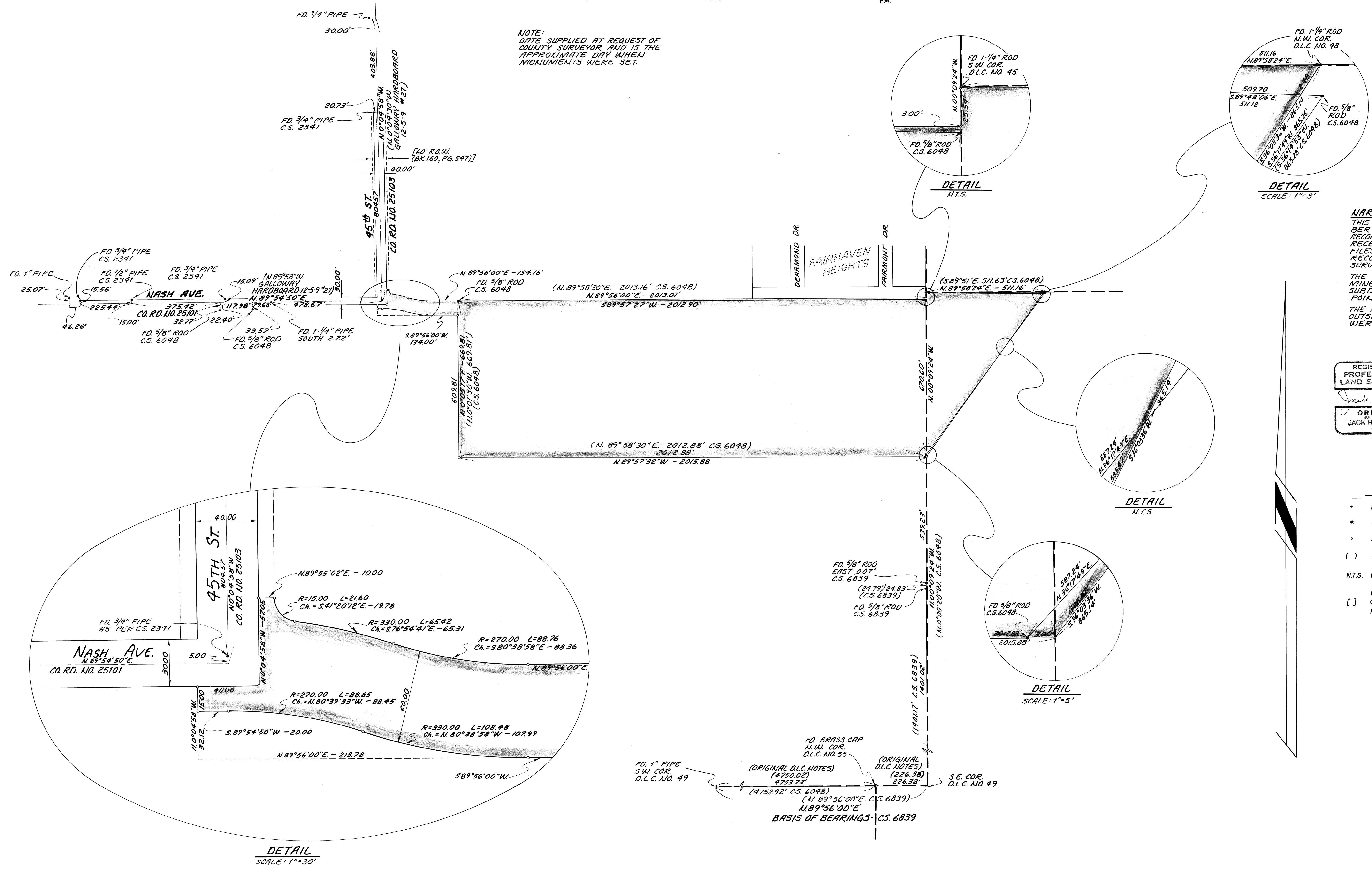


RECORD OF SURVEY  
for  
E.R.G. ASSOCIATES  
in  
GEORGE W. BETHERS D.L.C. No. 49  
S.E. 1/4 SEC. 9, T.12S., R.5W., W.M.  
BENTON COUNTY, OREGON  
SCALE: 1"=200'  
SEPTEMBER 15, 1979 [FILED SEPTEMBER 24, 1982]

Benton County  
Surveyor's Office  
C.S. FILE NO. 7447  
PLUMB DATE: 9-24-82  
PLATE SIZE: 24" x 36" P.A.

NOTE:  
DATE SUPPLIED AT REQUEST OF  
COUNTY SURVEYOR AND IS THE  
APPROXIMATE DAY WHEN  
MONUMENTS WERE SET.



**NARRATIVE**  
THIS SURVEY WAS PERFORMED IN SEPTEMBER 1979 AND INADVERTENTLY NOT RECORDED AT THAT TIME. HAVING JUST RECENTLY DISCOVERED THE MAP IN MY FILES, I AM NOW SUBMITTING IT FOR RECORDING WITH THE BENTON COUNTY SURVEYOR.  
THE PURPOSE OF THIS SURVEY IS TO DETERMINE THE OUTSIDE BOUNDARY FOR A SUBDIVISION PLAT ENTITLED "SOUTH POINTE".  
THE MONUMENTS SHOWN AS SET ON THE OUTSIDE BOUNDARY OF "SOUTH POINTE" WERE SET BY THIS SURVEY.

JACK R. BURRELL  
PAUL GREEN & ASSOC.  
1879 N.W. NINTH ST.  
CORVALLIS, OR. 97330  
(503) 757-8771

REGISTERED  
PROFESSIONAL  
LAND SURVEYOR  
*Jack R. Burrell*  
OREGON  
JACK R. BURRELL  
1630

- LEGEND**
- FOUND MONUMENT, AS NOTED
  - FOUND D.L.C. CORNER, AS NOTED
  - SET 5/8" x 30" STEEL ROD
  - ( ) RECORD DATA
  - N.T.S. NOT TO SCALE
  - [ ] INFORMATION ADDED TO SURVEY BASED ON SEPTEMBER 1982 KNOWLEDGE OR AT REQUEST OF COUNTY SURVEYOR