

DRAWING NUMBER  
**7456**

PLAN HOLD CORPORATION • IRVINE, CALIFORNIA  
RECORDER BY NUMBER 073AR  
POSITION EDGE OF PRINT ON THIS LINE

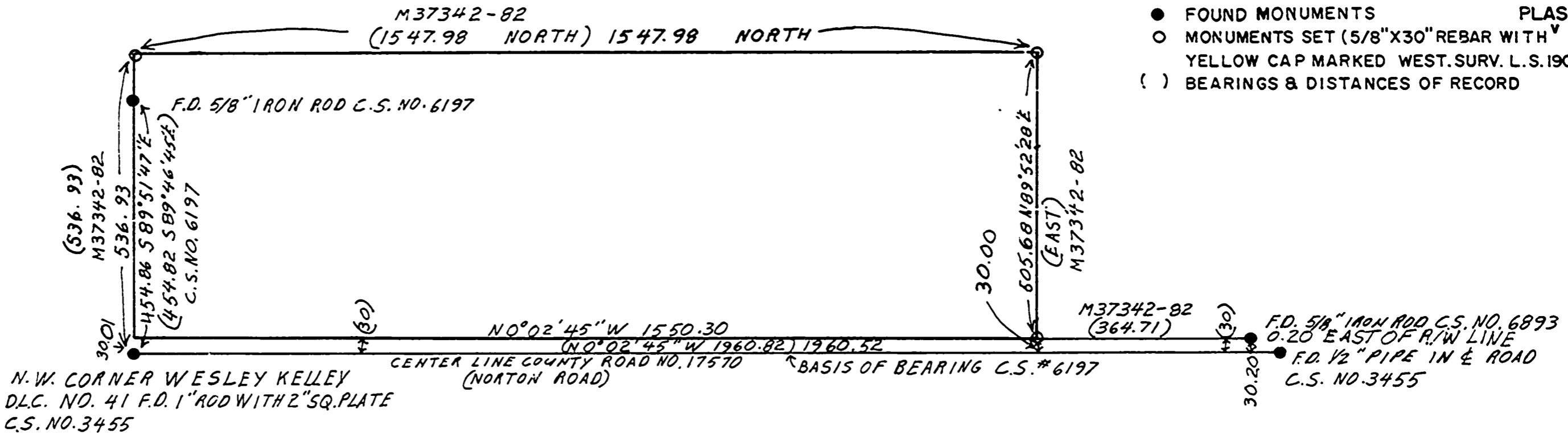
DRAWING NUMBER  
**7456**

PLAN HOLD CORPORATION • IRVINE, CALIFORNIA  
RECORDER BY NUMBER 073AR  
POSITION EDGE OF PRINT ON THIS LINE

RECORD OF SURVEY FOR JOE C. NEWELL  
W. 1/2 SECTION 11, T.11S., R.7W., W.M.  
WESLEY KELLEY D.L.C. NO. 41 BENTON COUNTY, OREGON  
SEPTEMBER 22, 1962  
WESTERN SURVEYING RT. 1, BOX 15, BLODGETT, OREGON PHONE 453-5401

Benton County  
Surveyor's Office  
C.S. FILE NO. 7456  
PLUMB DATE 10-18-82  
FILE SIZE 19" x 17"  
PKD.

REGISTERED  
PROFESSIONAL  
LAND SURVEYOR  
*John D. Howell*  
OREGON  
JULY 18, 1960  
JOHN D. HOWELL  
1901



- FOUND MONUMENTS
- MONUMENTS SET (5/8" X 30" REBAR WITH YELLOW CAP MARKED WEST. SURV. L.S. 1901)
- ( ) BEARINGS & DISTANCES OF RECORD

NARRATIVE: THIS SURVEY WAS PERFORMED TO MARK THE SOUTH AND EAST BOUNDARIES OF THE PARCEL OF LAND DESCRIBED IN MICROFILM NO. M 37342-82 BENTON COUNTY RECORDS. COUNTY SURVEY NOS 6197 & 6893 WERE USED FOR THE BASIS OF BEARING AND CONTROL.

**REEL 17 FRAME 121**