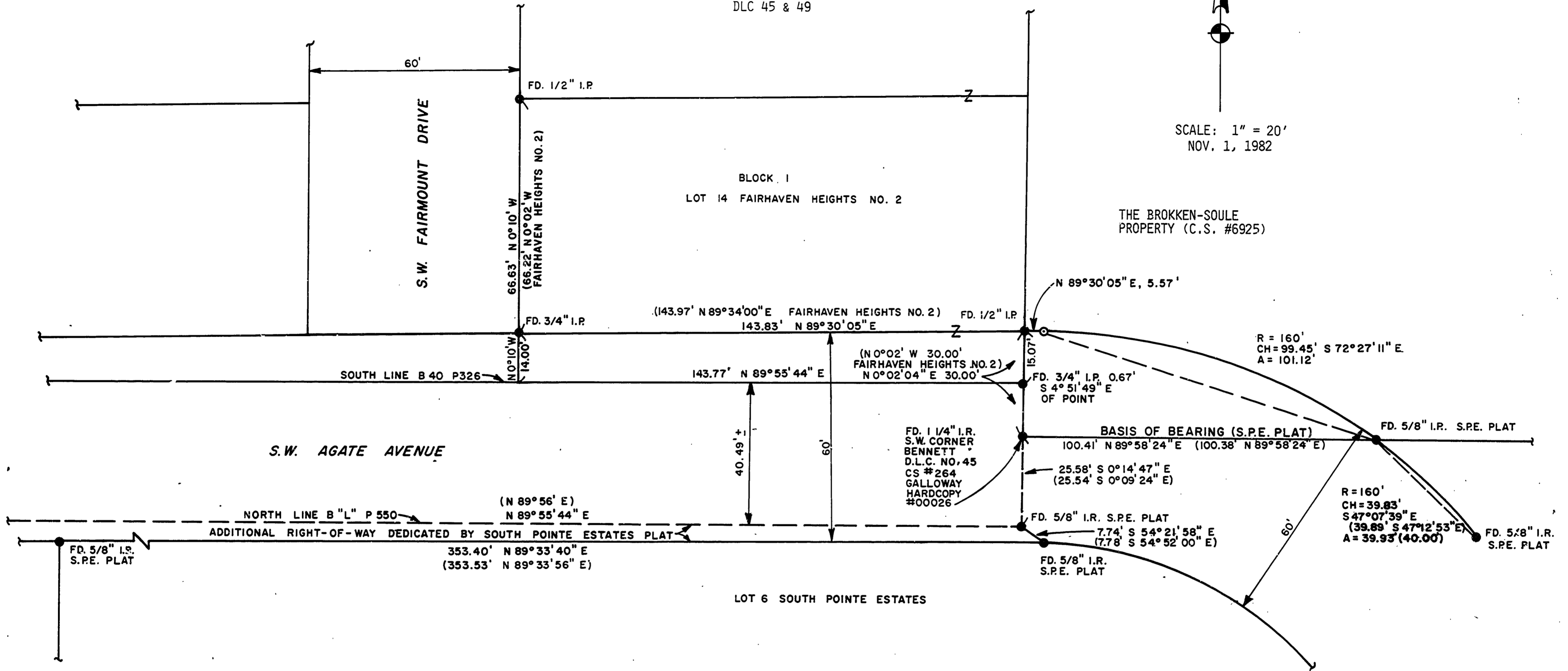
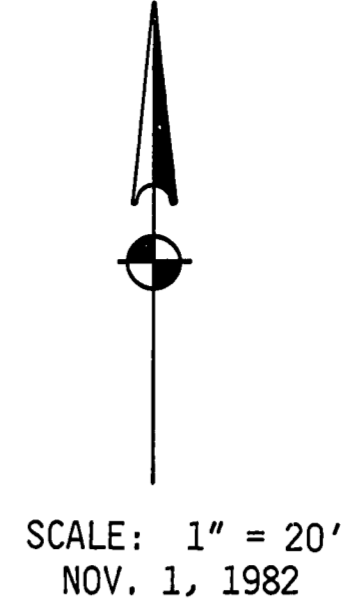


SURVEY FOR CITY OF CORVALLIS

S.W. AGATE AVENUE

SE 1/4 SEC. 9, T 12 S, R 5 W, W.M.
BENTON COUNTY, OREGON
DLC 45 & 49



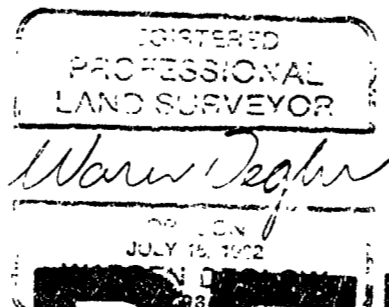
NARRATIVE

THE PURPOSE OF THIS SURVEY WAS TO MONUMENT A SMALL PARCEL OF PROPERTY TO BE DEDICATED FOR FUTURE STREET RIGHT-OF-WAY. THE SOUTH LINE OF THE PARCEL WAS ESTABLISHED BY THE NORTH LINE OF THE SOUTH POINTE ESTATES PLAT, THE WEST LINE BEING THE WEST LINE OF THE BROKKEN-SOULE PROPERTY (C.S. #6925). THE INTENTION WAS TO EXTEND THE 60' RIGHT-OF-WAY PLATTED BY SOUTH POINTE ESTATES TO THE NORTHWEST AND TERMINATE AT THE WEST LINE OF THE J.A. BENNETT DLC NO. 45. THE NORTH RIGHT-OF-WAY LINE OF THE FUTURE STREET THEN BEING THE SOUTH LINE OF LOT 14 BLOCK 1 OF FAIRHAVEN HEIGHTS NO. 2. THE SW CORNER OF THE BENNETT DLC (1 1/4" IR) AND A 5/8" IR ON THE NORTH LINE OF SOUTH POINTE ESTATES WERE USED AS THE BASIS OF BEARING. MONUMENTS FOUND IN LOT 14 ARE FROM FAIRHAVEN HEIGHTS NO. 2 PLAT

REFERENCES

SOUTH POINTE ESTATES PLAT (S.P.E. PLAT)
GALLOWAY HARDCOPY NO. 00026
C.S. #6925
C.S. #4057
FAIRHAVEN HEIGHTS NO. 2 PLAT
B40 P326 BENTON COUNTY DEED RECORDS
B L P550 BENTON COUNTY DEED RECORDS
M-76920 BENTON COUNTY DEED RECORDS
B134 P680 BENTON COUNTY DEED RECORDS

CITY OF CORVALLIS
501 S.W. MADISON AVENUE
CORVALLIS, OR 97333



LEGEND

- () DATA OF RECORD, FROM SOUTH POINTE ESTATES PLAT, UNLESS OTHERWISE NOTED
- FOUND MONUMENT AS SHOWN (FD.)
- ⊙ SET 5/8" x 30" IRON ROD WITH YELLOW, PLASTIC CAP MARKED "CITY OF CORVALLIS"
- S.P.E. - SOUTH POINTE ESTATES
- I.P. - IRON PIPE (INSIDE DIA.)
- IR - IRON ROD
- DLC - DONATION LAND CLAIM

Benton County
Surveyor's Office

C.S. FILE NO. 7465
FILING DATE 11-16-82
FILE SIZE 18" x 24"
P.M.D.