

LOT LINE ADJUSTMENT SURVEY
for ARCHIE STURDEVANT
in S 1/2 SEC 29, T12S, R6W, W.M.
BENTON COUNTY, OREGON
MARCH 18, 1983 SCALE: 1" = 200'

LEGEND

- Found monument as noted
- Set 5/8"x30" rebar with yellow plastic cap stamped "Northstar PLS 1823"
- ()... Data of, or calculated from, the record shown
- []... Data calculated to force closure
- ①... Boundary course number - see "BOUNDARY COURSES"
- Ⓐ... Galloway 12-6 #33
- Ⓑ... CS 6434
- Fence line - approximate location only
Deed = Book 148, Pages 2544-255, Benton County deed records

BOUNDARY COURSES

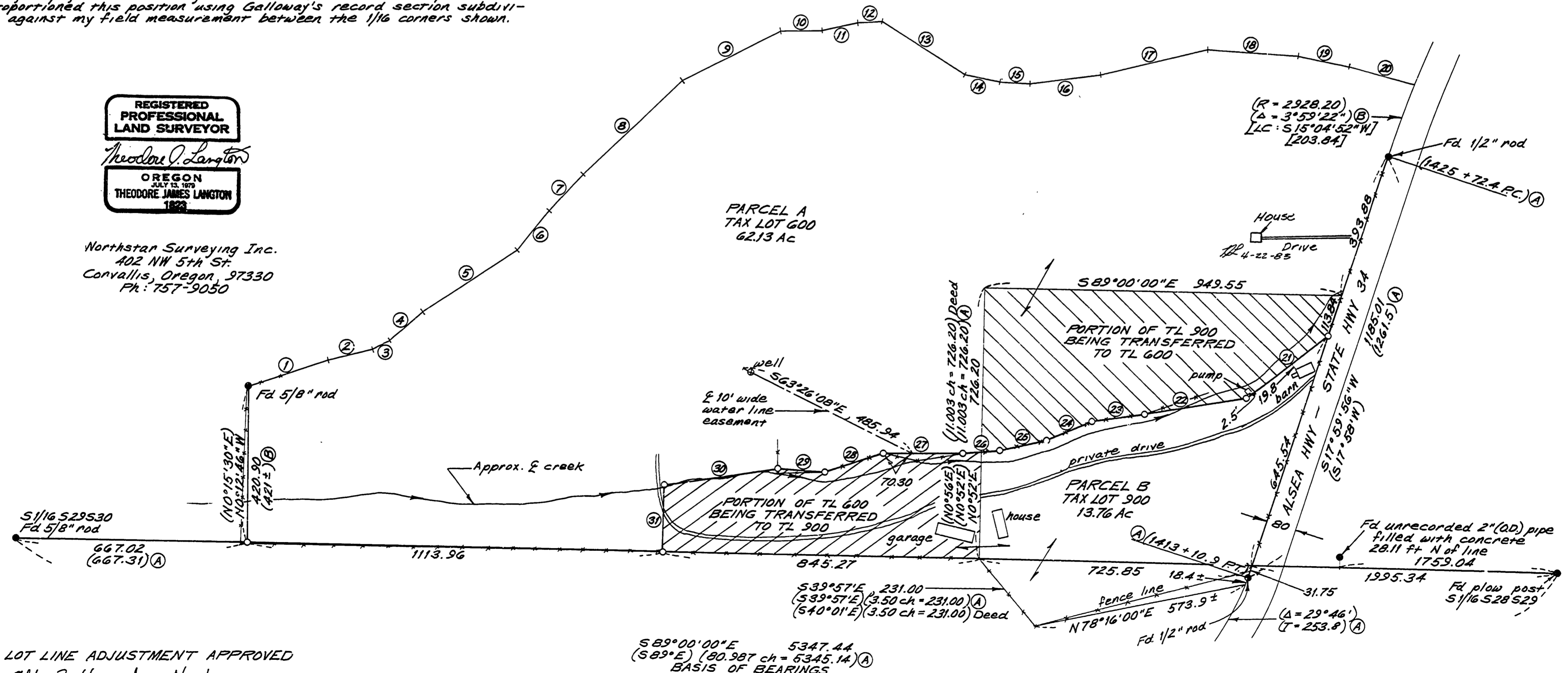
COURSE	BEARING	DISTANCE
1	N71°27'59"E	225.15
2	N75°52'04"E	123.72
3	N60°48'44"E	50.32
4	N48°40'14"E	114.99
5	N56°30'29"E	302.92
6	N37°50'59"E	132.94
7	N42°49'54"E	132.50
8	N46°08'54"E	363.58
9	N63°02'24"E	293.77
10	N88°41'29"E	111.49
11	N77°20'34"E	35.84
12	N85°07'14"E	62.03
13	S57°40'36"E	266.88
14	S79°18'56"E	94.58
15	S87°28'16"E	80.64
16	N82°22'14"E	188.66
17	N76°28'24"E	291.27
18	S86°00'16"E	244.15
19	S78°45'46"E	138.57
20	S75°02'16"E	174.04
21	S53°40'07"W	277.91
22	S80°17'04"W	272.88
23	S82°12'33"W	141.77
24	S66°33'24"W	128.91
25	S77°01'48"W	127.51
26	S84°51'53"W	98.38
27	S89°58'05"W	211.66
28	S71°55'48"W	162.89
29	N85°53'46"W	124.75
30	S81°26'05"W	305.82
31	S 1°00'00" W	180.44

NARRATIVE

The purpose of this survey is to adjust the existing parcel boundaries to follow the existing creek rather than divide the hillside pasture. Surveys consulted were Galloway hardcopy 12-6 #33, CS #'s 4631, 4983, 5894, 6030, 6434, and 7495. The S 1/16 corner between sections 30 and 29 was set by Galloway on 12-6 #33. Survey 6030 reset this corner, not finding Galloway's monument. I held this new 1/16 corner along with the plow post on the east end for the 1/16 section line which is the Basis of Bearings. There is a problem with the Hwy 34 R/W. A 76 ft difference exists between Galloway's record and the field located monuments on the westerly R/W line. Both found monuments fit the apparent road alignment and I found, though didn't tie, the easterly R/W monument opposite the shown southernmost R/W monument. The Highway Department had no record of any changes in alignment of the road in this area. The angular relationship between the R/W and the 1/16 section line fits within 2 minutes of Galloway's record so the found pins were used to establish the R/W. The new 1st line was established according to the client's wishes: following the existing old fence line that runs along and north of the existing creek. The west end of the new line was placed so that an existing road crossing the creek would be on parcel A. On the east end, courses 22 and 21 were designed to place the pump on parcel A and the barn on parcel B. The SW corner of parcel A is, by deed description, the SW corner of "the east half of the NW 1/4, SW 1/4, Section 29" or, in other words the C-W-SW 1/64 corner. I proportioned this position using Galloway's record section subdivision against my field measurement between the 1/16 corners shown.



Northstar Surveying Inc.
402 NW 5th St.
Corvallis, Oregon, 97330
Ph: 757-9050



S89°00'00"E 5347.44
(S89°E) (80.987 ch = 5345.14) Ⓐ
BASIS OF BEARINGS

LOT LINE ADJUSTMENT APPROVED
Albie Howard 4/22/83
Planning Official by RC Date