

DRAWING NUMBER  
**7546**

DRAWING NUMBER

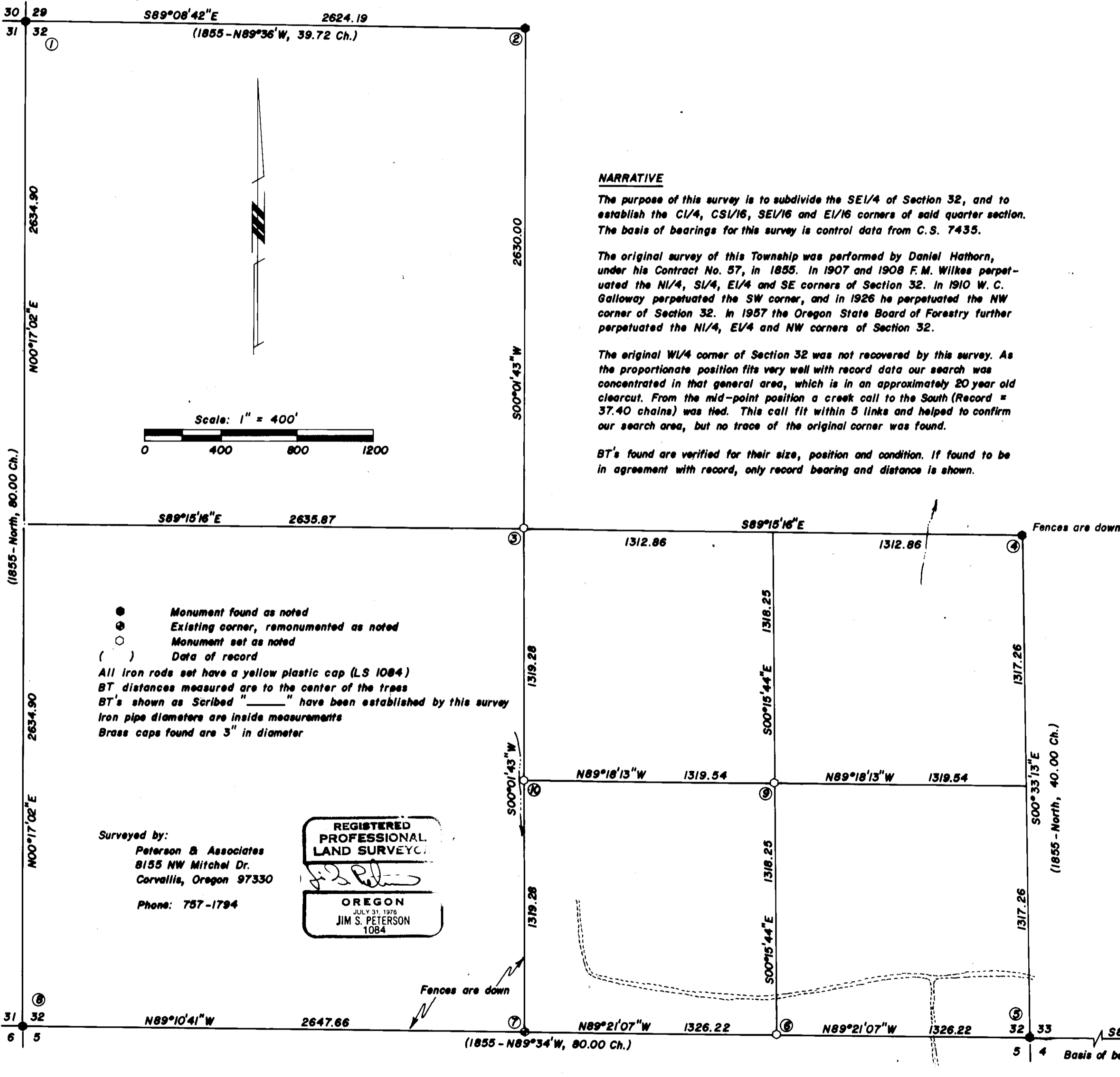
DRAWING NUMBER

DRAWING NUMBER  
**7546**

**RECORD OF SURVEY**  
for **STARKER FORESTS, INC.**  
in **SECTION 32, T11S, R7W, W.M.**  
**BENTON COUNTY, OREGON**  
**JULY 22, 1983**

**Benton County**  
**Surveyor's Office**

C. S. FILE NO. 7546  
FILING DATE 8-10-83  
FILE SIZE 18" x 24"  
P. M. E. D.



**CORNER NOTES**

- ① **NW Corner Section 32**  
Found Oregon State Board of Forestry brass cap  
38" Fir, (S59°50'W, 133 lks.) Healed face  
32" Fir Stump, (S14°E, 78.9 lks.) Healed face  
30" Down Fir, (N28°W, 37.8 lks.) Healed face  
32" Fir, (N44°30'E, 50.00 ft.) Healed face
- ② **1/4 Corner Sections 29 & 32**  
Found Oregon State Board of Forestry brass cap  
52" Fir Stump, (S09°55'W, 22.3 ft.) Healed face  
18" Fir, N62°W, 9.7 ft. Scribed "1/4 S29 BT"  
10" Fir, S19°E, 26.3 ft. Scribed "1/4 S32 BT"
- ③ **CI/4 Corner Section 32**  
Set 5/8" X 30" iron rod  
30" Fir, N25°E, 14.4 ft. Scribed "CI/4 S32 BT"  
14" Fir, N72°W, 36.3 ft. Scribed "CI/4 S32 BT"
- ④ **1/4 Corner Sections 32 & 33**  
Found Oregon State Board of Forestry brass cap  
60" Fir, (S49 1/2°E, 35.8 ft.) Healed face  
60" Fir, (N66 1/4°W, 31.3 ft.) Healed face  
Fences go North and East from this point
- ⑤ **SE Corner Section 32**  
Found 1/2" iron pipe  
28" Fir, S02 1/4°W, 46.7 ft. (S02 1/4°W, 70.7 lks.) Healed face  
22" Alder Stump, N72°E, 30.7 ft. (N72°E, 46.6 lks.) Scar visible  
24" Alder, S82°E, 14.2 ft. Scribing visible  
10" Alder, N06°E, 24.8 ft. Scribing visible  
12" Alder, N38°W, 19.3 ft. Scribing visible
- ⑥ **EI/16 Corner Sections 32 & 5**  
Set 5/8" X 30" iron rod  
14" Fir, N10°E, 18.9 ft. Scribed "EI/16 S32 BT"  
11" Fir, S67°E, 24.0 ft. Scribed "EI/16 S32 BT"
- ⑦ **1/4 Corner Sections 32 & 5**  
Set 5/8" X 30" iron rod at old fence corner (Fences to North and West)  
Rotted Fir Stub, (N06°E, 75 lks.) - Original BT No marks visible  
Rotted Fir Stub, (S40°E, 84 lks.) - Original BT No marks visible  
8" Fir, S06°E, 22.2 ft. Scribed "1/4 S5 BT"  
24" Fir, N71°W, 6.5 ft. Scribed "1/4 S32 BT"  
Found no trace of Wilkes 1908 BT's (the 14° vertical angle to his SW BT fits the ground)
- ⑧ **SW Corner Section 32**  
Found 1" iron pipe  
36" Fir, (N57°E, 115.3 ft.) Healed face  
22" Alder, (N03°47'E, 75.1 lks.) Chopped face  
48" Fir, (S25°14'E, 233.8 lks.) Healed face  
48" Fir, (S21°15'W, 175.3 lks.) Healed face  
28" Maple, (N11°27'W, 105.2 lks.) Chopped face
- ⑨ **SEI/16 Corner Section 32**  
Set 5/8" X 30" iron rod  
8" Fir, N62°W, 10.5 ft. Scribed "SEI/16 S32 BT"  
8" Fir, S36°W, 16.2 ft. Scribed "SEI/16 S32 BT"
- ⑩ **CSI/16 Corner Section 32**  
Set 5/8" X 30" iron rod  
24" Alder, N02°E, 38.5 ft. Scribed "CSI/16 S32 BT"  
46" Fir, S77°W, 33.1 ft. Scribed "CSI/16 S32 BT"
- ⑪ **N1/4 Corner Section 4**  
Found Oregon State Board of Forestry brass cap

**NARRATIVE**

The purpose of this survey is to subdivide the SE1/4 of Section 32, and to establish the CI/4, CSI/16, SEI/16 and EI/16 corners of said quarter section. The basis of bearings for this survey is control data from C.S. 7435.

The original survey of this Township was performed by Daniel Hathorn, under his Contract No. 57, in 1855. In 1907 and 1908 F.M. Wilkes perpetuated the N1/4, S1/4, E1/4 and SE corners of Section 32. In 1910 W. C. Galloway perpetuated the SW corner, and in 1926 he perpetuated the NW corner of Section 32. In 1957 the Oregon State Board of Forestry further perpetuated the N1/4, E1/4 and NW corners of Section 32.

The original W1/4 corner of Section 32 was not recovered by this survey. As the proportionate position fits very well with record data our search was concentrated in that general area, which is in an approximately 20 year old clearcut. From the mid-point position a creek call to the South (Record = 37.40 chains) was tied. This call fit within 5 links and helped to confirm our search area, but no trace of the original corner was found.

BT's found are verified for their size, position and condition. If found to be in agreement with record, only record bearing and distance is shown.

- Monument found as noted
  - Existing corner, remonumented as noted
  - Monument set as noted
  - ( ) Data of record
- All iron rods set have a yellow plastic cap (LS 1084)  
BT distances measured are to the center of the trees  
BT's shown as Scribed " " have been established by this survey  
Iron pipe diameters are inside measurements  
Brass caps found are 3" in diameter

Surveyed by:  
**Peterson & Associates**  
8155 NW Mitchel Dr.  
Corvallis, Oregon 97330  
Phone: 757-1794

