

7550

7550

Benton County  
Surveyor's Office

C.S. FILE NO. 7550  
FILING DATE 8-8-83  
FILE SIZE 18" x 24" x 4 PL  
narrative 7.4x5

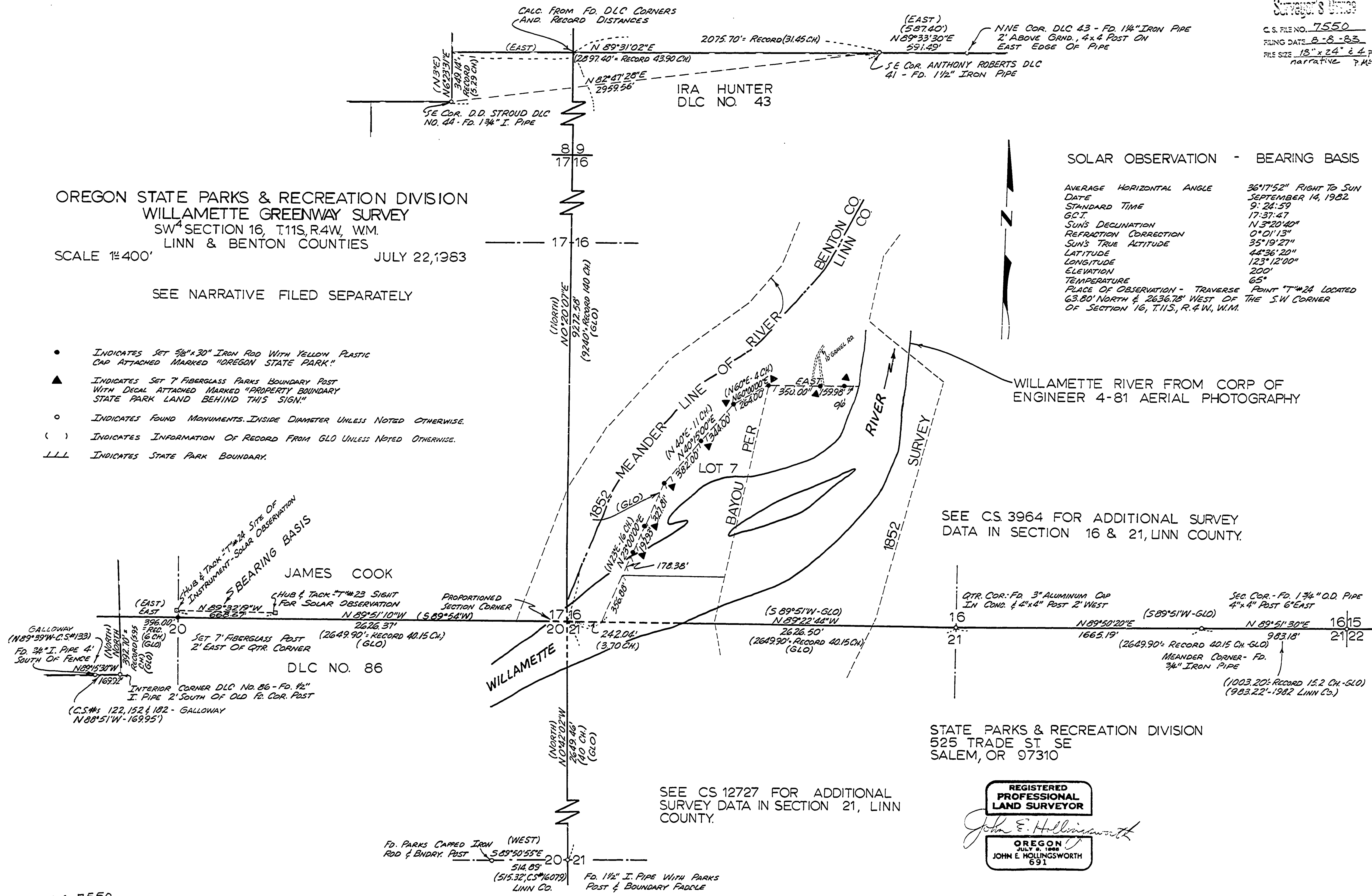
OREGON STATE PARKS & RECREATION DIVISION  
WILLAMETTE GREENWAY SURVEY  
SW 1/4 SECTION 16, T.11S, R.4W, W.M.  
LINN & BENTON COUNTIES  
SCALE 1"=400' JULY 22, 1983

SEE NARRATIVE FILED SEPARATELY

- INDICATES SET 3/8" x 30" IRON ROD WITH YELLOW PLASTIC CAP ATTACHED MARKED "OREGON STATE PARK"
- ▲ INDICATES SET 7" FIBERGLASS PARKS BOUNDARY POST WITH DECAL ATTACHED MARKED "PROPERTY BOUNDARY STATE PARK LAND BEHIND THIS SIGN"
- INDICATES FOUND MONUMENTS. INSIDE DIAMETER UNLESS NOTED OTHERWISE.
- ( ) INDICATES INFORMATION OF RECORD FROM GLO UNLESS NOTED OTHERWISE.
- LLL INDICATES STATE PARK BOUNDARY.

SOLAR OBSERVATION - BEARING BASIS

AVERAGE HORIZONTAL ANGLE	36°17'52" RIGHT TO SUN
DATE	SEPTEMBER 14, 1982
STANDARD TIME	9:24:59
G.C.T.	17:37:43
SUN'S DECLINATION	11°20'40"
REFRACTION CORRECTION	0°01'13"
SUN'S TRUE ALTITUDE	35°19'27"
LATITUDE	44°36'20"
LONGITUDE	123°12'00"
ELEVATION	200'
TEMPERATURE	65°
PLACE OF OBSERVATION - TRAVERSE POINT "T" #24 LOCATED 63.80' NORTH & 2636.78' WEST OF THE SW CORNER OF SECTION 16, T.11S, R.4W, W.M.	



WILLAMETTE RIVER FROM CORP OF ENGINEER 4-81 AERIAL PHOTOGRAPHY

SEE CS 3964 FOR ADDITIONAL SURVEY DATA IN SECTION 16 & 21, LINN COUNTY.

SEE CS 12727 FOR ADDITIONAL SURVEY DATA IN SECTION 21, LINN COUNTY.

STATE PARKS & RECREATION DIVISION  
525 TRADE ST SE  
SALEM, OR 97310

REGISTERED PROFESSIONAL LAND SURVEYOR

John E. Hollingsworth  
OREGON  
JULY 9, 1968  
JOHN E. HOLLINGSWORTH  
691

OREGON STATE PARKS AND RECREATION DIVISION  
Willamette Greenway Survey  
SW $\frac{1}{4}$  Section 16, T11S, R4W, W.M.  
Linn and Benton Counties  
July 22, 1983  
(See Plat)

Benton County  
Surveyor's Office

C. S. FILE NO. 7550  
FILING DATE 8-8-83  
FILE SIZE 18" x 24" i 4 pg.  
narrative P.M.D.

NARRATIVE

The purpose of this survey was to establish Lot 7 in Section 16, T11S, R4W, W.M.

Control traverses were established with a "Jena" one-minute theodolite and a McHenry "Mac II-H" electronic distance measuring instrument.

The bearings were established by a solar observation taken on traverse point "T" #24 located 63.80' North and 2636.78' West of the S.W. corner of Section 16, T11S, R4W, W.M.

Since the SW corner of Section 16 lands in the river and the meander corners could not be located, we re-established said SW corner by double-proportionate measurement. This corner was needed to establish the meander lines which are a part of Lot 7.

The quarter corners South and East were found and tied as shown on the accompanying plat. Control to the West was established by locating the interior corner of DLC No. 86 and an iron pipe N89<sup>0</sup>15'30"W - 169.92' as shown on County Survey numbered 122, 152 and 182. From the interior corner we calculated the position of the quarter corner between Section 17 and 20 based on the James W. Cook DLC No. 86 record information. Control to the North was based on calculations between the S.E. corner of D.D. Stroud DLC No. 44 and the Southeast corner of Anthony Roberts DLC No. 41. This calculation together with record distances shown on the G.L.O. plat allowed us to establish the Section line between Sections 8 and 9.

From the calculated Section corner we established the meander corner on the East bank by single proportionate measurement between said Section corner and the South quarter corner of Section 16. With record information we then established the original meanders of the river along the East bank which was necessary to establish the West line of Lot 7.

Corner Information  
Var. 20 $\frac{1}{2}$ <sup>0</sup>

Interior Corner James Cook DLC No. 86

Re-establishment by W.C. Galloway (1910)

Set Stake

10" Maple bears N41 $\frac{1}{2}$ <sup>0</sup>E - .12 ch.  
20" W. fir bears S5<sup>0</sup>E - .360 ch.  
24" W. fir bears N76<sup>0</sup>40'W - .680 ch.

Parks Crew found:

$\frac{1}{2}$ " iron pipe at old fence corner 2' south of post.

Quarter Corner Between Sections 17 and 20

Original:

Set Post

12" white oak bears S48<sup>0</sup>W - 36 lks.  
10" ash bears North - 34 lks.

Parks Crew Set:

5/8" x 30" iron rod with a yellow plastic cap attached marked "OREGON STATE PARK." Set a 7' fiberglass post 2' East of corner.

9" ash in a cluster of three bears N75<sup>0</sup>W - 85.2' to center, blazed and scribed " $\frac{1}{4}$  S17BT."

C. S. FILE NO. 7550  
FILING DATE 8-8-83  
FILE SIZE 18" x 24" & 4 pgs.  
*narrative P.M.D.*

16" maple bears S40<sup>0</sup>W - 98.4' to center, blazed and scribed  
"1/4 S20BTRS691."

SE Corner D.D Stroud DLC No. 44

Original:

18" white oak bears S88<sup>0</sup>W - 20 lks.  
20" white oak bears N56 3/4<sup>0</sup>W - 35 lks.  
18" white oak bears S64 3/4<sup>0</sup>E - 85 lks.

Re-establishment by W.C. Galloway (1916); Parks crew findings in parentheses.

Angle iron, rail splice set (fd. 1 3/4" iron pipe)  
18" oak bears S88<sup>0</sup>W - 0.2 chains (fd. at 13.6')  
3" walnut bears N10<sup>0</sup>40'W - .515 chains (fd. at 33.6')  
To near rail on main line - .364 chains (fd. at 24.6')

SE Corner Anthony Roberts DLC No. 41

Re-establishment by W.W. Larson:

Set mower sycle (sic) by oak corner post 1 1/4" pipe bears N89<sup>0</sup>36'E -  
8.984 chains.  
15" ash bears N87<sup>0</sup>30'E, nail in S. side bears N88<sup>0</sup>30'E - .9264 chains.  
33" maple bears S86<sup>0</sup>35'W - 1.2544 ch. to spike in center 4' up.

Parks Crew found:

1 1/2" iron pipe buried 1' deep, 12' SW from edge of gravel road.  
Found possible ash BT fallen over, scribed "CS" with metal tag - "DO NOT  
CUT."

N NE Corner DLC No. 43

Original:

Set Post  
20" maple bears S44<sup>0</sup>W - 80 lks. (missing)  
24" maple bears N64<sup>0</sup>E - 38 lks. (missing)

Re-establishment by W.W. Larson:

1 1/4" pipe by post interior corner bears S0<sup>0</sup>24'E - 0.80 chains.

Parks Crew found:

1 1/4" iron pipe 2' above ground, 4"x4" post on East edge of pipe. No BT's.

Section Corner 15, 16, 21 and 22

Re-establishment by Alfred Geddes (1911)

Found old trees and set iron pipe from which:

20" oak bears N10<sup>0</sup>30'W - 101 lks.  
20" oak bears N67<sup>0</sup>15'E - 88 lks.  
24" oak bears S79<sup>0</sup>30'E - 122 ft.  
Oak stump bears S15<sup>0</sup>30'W - 106.7 ft.

Re-establishment by O.A. Carnegie (1951)

Found 1 1/4" pipe and the above mentioned BT's all standing.

Set a 3/4" iron pipe 14.65' West of property corner.

C. S. FILE NO. 7550  
FILING DATE 8-8-83  
FILE SIZE 18" x 24" & 4 pg.  
narrative P.M.F.D.

Parks Crew Found:

1 3/4" outside diameter pipe and 4"x4" post 6" East of pipe.  
24" oak bears N70°W - 67.5' to center, blaze grown over.  
26" oak bears N69°E - 59.6' to center, blaze grown over.  
31" oak bears S68°E - 123.0' to center, blaze grown over.

Meander Corner 15.2 Chains West of Section Corner 15,16,21 and 22

Original:

Set meander post

6" ash bears S54°W - 14 lks.  
12" ash bears N60°E - 14 lks.

Re-establishment by A.L. Geddes, County Surveyor, and Charles H. Leonard,  
Deputy (March 22, 1915)

Found 2"x12" iron pipe  
12" ash bears S30°W - 14 lks.  
12" oak bears N62.5°E - 15 lks.

County Surveyor Field Notes (May 15, 1982)

Found 2" pipe, top was broken off - we set a 1/2"x30" pipe inside. Found  
BT's.

14" ash S30°W (stump 2' high, rotten)  
20" oak N62 1/2°E (stump 5' high, hollow)

Parks Crew found:

3/4" iron pipe.  
12" ash stump S32°W - 9.4' to center, no blaze visible.  
24" oak stump N71°E - 10.3' to center, blaze grown over.

Quarter corner Between Sections 16 and 21

Re-establishment by A.L. Geddes, County Surveyor, and Charles H. Leonard,  
Deputy (March 23, 1915)

Set 2"x24" iron pipe 12" below surface. Deposited bottle and insulators.

10" ash bears S53°W - 49 lks.  
16" maple bears N71 1/2°E - 12 lks.  
16" maple bears S37 1/4°E - 11 lks.

County Surveyor Field Notes (May 15, 1982)

Found 2" pipe down 32" on the top of the bank. BT N71 1/2°E is blown down  
and laying beside the pipe. All other BT's are gone.

Set 3" Linn County aluminum cap in concrete, 4"x4" post marked 1/4 Section  
Corner  $\frac{16}{21}$  2' West.

Parks Crew found:

Linn County's set and 4"x4" post, as described above.

Willamette Greenway Survey  
SW $\frac{1}{4}$  Section 16, T11S, R4W, W.M.  
July 22, 1983  
Page 4

Benton County  
Surveyor's Office

C. S. FILE NO. 7550  
FILING DATE 8-8-83  
FILE SIZE 18" x 24" & 4 pg.  
narrative P.M.E.D.

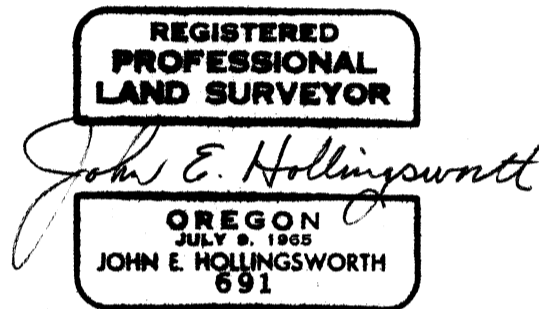
Quarter Corner Between Sections 20 and 21

Linn County Book 11, Page 17:

"1/4 Section ash 10" bears N50<sup>0</sup>E - 27 links  
balm 36" bears N45<sup>0</sup>W - 14 links  
"(Ash post 3x3x42 beneath dishes also 2 boulders - ash 14"N50<sup>0</sup>E - 27  
links.  
Ash 8" S42<sup>0</sup>E - 67 links - 1902 - H.G.F.)"

Parks Crew found:

1 $\frac{1}{2}$ " iron pipe with Parks post and boundary paddle.



John E. Hollingsworth  
State Parks and Recreation Division  
525 Trade Street SE  
Salem OR 97310