

7562

7562

(N) OCCUPANCY SURVEY FOR:  
**HENRY CHUN**  
 IN  
 J.W. STARR D.L.C. NO. 54,  
 SE. 1/4 SEC. 11 T. 14 S., R. 6 W.W.M.  
 BENTON CO., OREGON  
 SEPT. 3, 1983 SCALE 1" = 200'

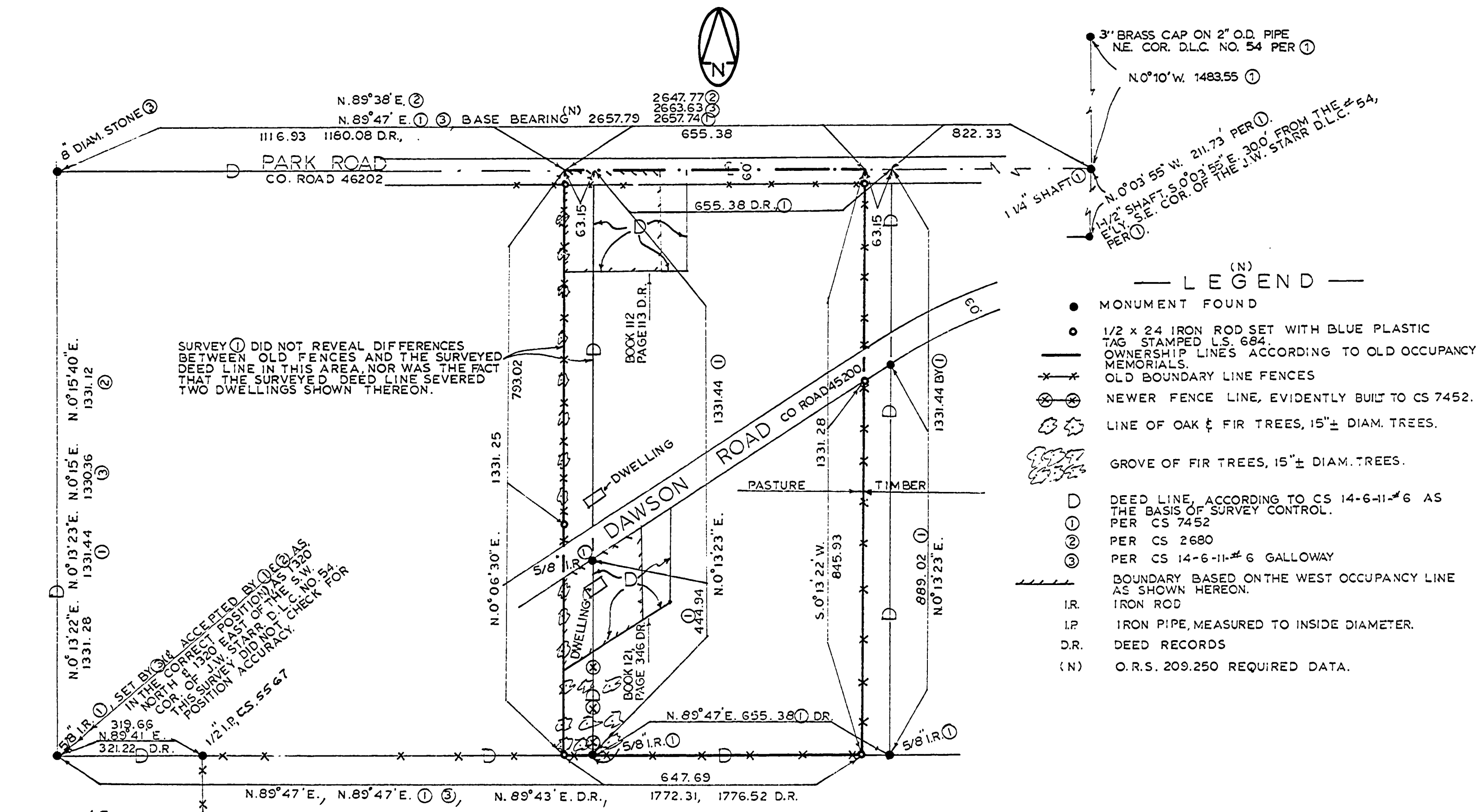
Benton County  
 Surveyor's Office

C.S. FILE NO. 7562  
 FILING DATE 9-13-83  
 FILE SIZE 15" x 18" P.A.D.

(N) BY: R.S. CASTLEBERRY  
 ASSOCIATED SURVEYORS  
 P.O. BOX 394  
 HARRISBURG, OR. 97446  
 995-6002

*R.S. Castleberry*  
 R.S. CASTLEBERRY  
 504

(N) SURVEY PROCEDURE: CHECK ACCURACY OF PREVIOUS SURVEYS & TO RELATE LONG ACCEPTED OCCUPANCY LINES THERETO, AS SHOWN HEREON.



C.S. 7562